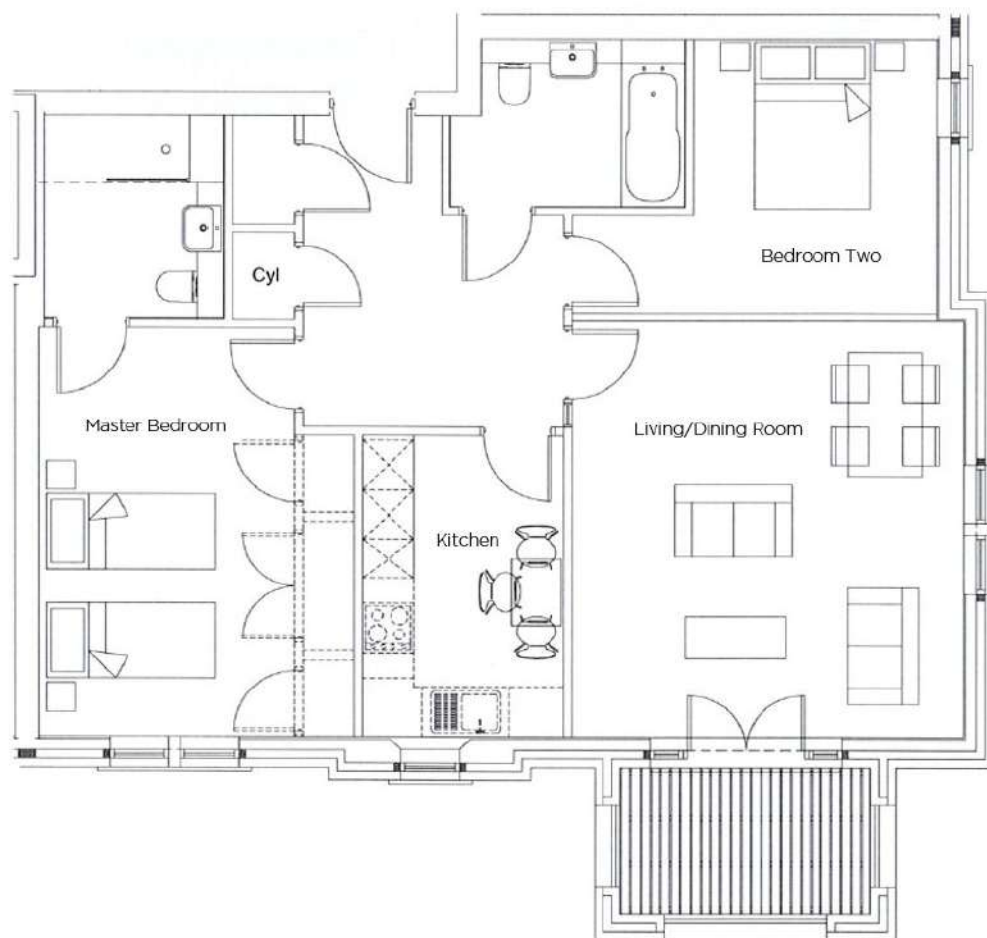


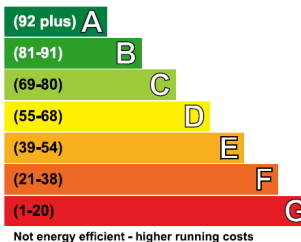
# Audley St Elphin's Park

8 Robinson Court  
Two bedroom first floor 'pre-owned' apartment



Internal Measurements	Metric (m)	Imperial (ft)
Kitchen	2.4m x 3.6m	7'10" x 11'9"
Living/Dining Room	4.7m x 4.95m	15'5" x 16'2"
Master Bedroom	3.75m x 4.85m	12'3" x 15'10"
Bedroom two	2.95m x 3.3m	9'8" x 10'9"

Very energy efficient - lower running costs



Current	Potential
84	86

Audley St Elphin's Park  
Dale Road South, Darley Dale, Matlock DE4 2RH  
01629 733 337 [stelphinssales@audleyvillages.co.uk](mailto:stelphinssales@audleyvillages.co.uk)

Built in wardrobes in bedrooms have not been included in the overall dimensions.  
Maximum measurements shown. These pages are intended for marketing purposes only.  
Designs vary according to plot and all details should be checked at the Sales office.  
July 2017



# Audley St Elphin's Park

8 Robinson Court

Two bedroom first floor 'pre-owned' apartment



## Two Bedroom Apartment



This two bedroom first floor apartment boasts a spacious living/dining room, that is benefited by a modern electric fire and surround. The apartment has a private south-facing balcony with views over the croquet lawn. A large master bedroom is complimented by good storage facilities and an en-suite shower room. The property also offers a good sized guest bedroom and fully fitted bathroom.



## Property specifications

- Dual aspect living room with south-facing balcony
- Large master bedroom with en-suite shower
- Guest bedroom
- Fully fitted kitchen with drop leaf table
- Good storage facilities throughout
- Located conveniently close to St Elphin's House
- Allocated parking space

**£260,000** (other fees apply)

Monthly management fee £719.70

Annual ground rent £250

Viewing by appointment with the sales office.

Audley St Elphin's Park  
Dale Road South, Darley Dale, Matlock DE4 2RH  
01629 733 337 stelphinssales@audleyvillages.co.uk

