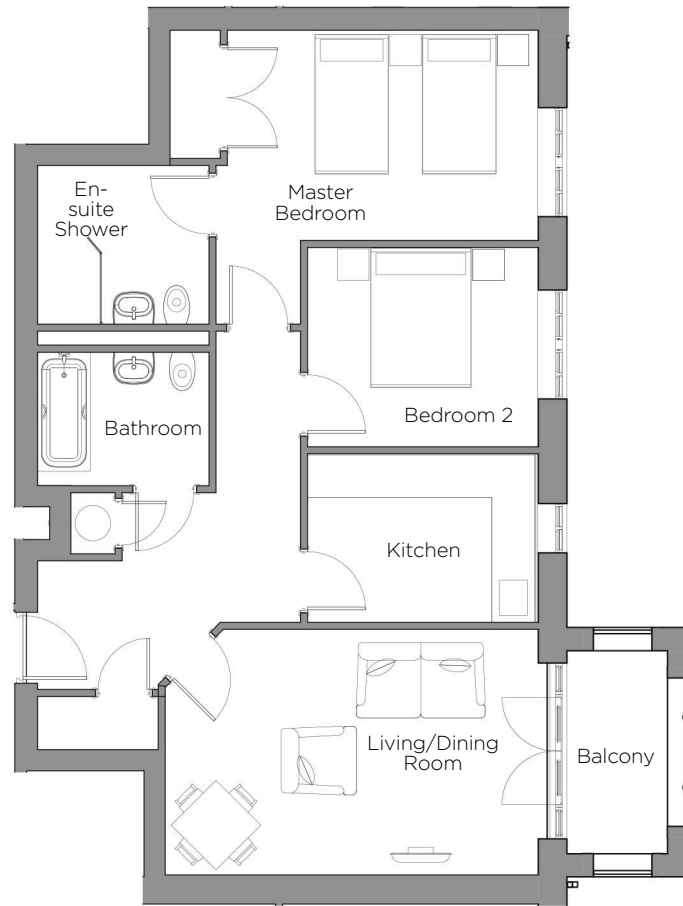
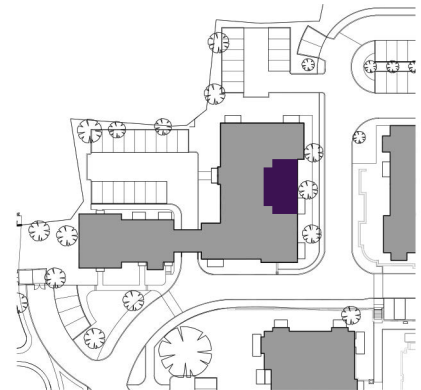


Audley St Elphin's Park

10 Pollard Way
First Floor Apartment
Plot 138



Internal Measurements	Metric (m)	Imperial (ft)
Living/Dining Room	5.31m x 3.49m	17'5" x 11'6"
Kitchen	3.28m x 2.40m	10'9" x 7'11"
Master Bedroom	4.42m x 2.99m	14'6" x 9'10"
Bedroom 2	3.28m x 2.84m	10'9" x 9'4"
Balcony (approx)	2.89m x 1.43m	9'6" x 4'8"



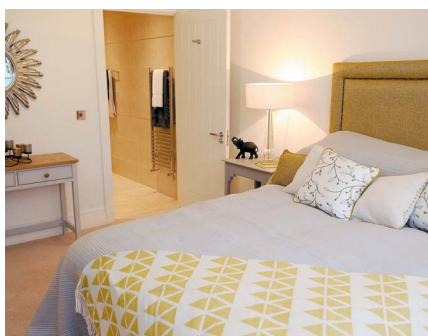
Audley St Elphin's Park
St Elphin's Park, Dale Road South, Darley Dale, Matlock DE4 2RH
01629 733 337 stelphinssales@audleyvillages.co.uk
www.audleyvillages.co.uk

Built-in wardrobes in bedrooms have not been included in the overall dimensions.
Maximum measurements shown. These pages are intended for marketing purposes only.
Designs vary according to plot and all details should be checked at the Sales Office.
December 2017



Audley St Elphin's Park

10 Pollard Way
First Floor Apartment
Plot 138



2 bedroom first floor apartment

This south-east facing first floor apartment has a spacious living/dining room that opens out onto a private balcony. The large master bedroom has fitted wardrobes and a luxury Villeroy & Boch shower en-suite. There is a further second double bedroom and a main bathroom. There are two storage cupboards in the hallway and the apartment can be accessed via stairs or lift.

Property specifications:

- Large living/dining room with private balcony
- Siematic kitchen with integrated appliances including fridge-freezer and microwave
- Spacious south-east facing master bedroom with double fitted wardrobe and en-suite
- Villeroy & Boch additional bathroom
- Second double bedroom
- Accessible via stairs or lift

Audley St Elphin's Park
St Elphin's Park, Dale Road South, Darley Dale, Matlock DE4 2RH
01629 733 337 stelphinssales@audleyvillages.co.uk
www.audleyvillages.co.uk

