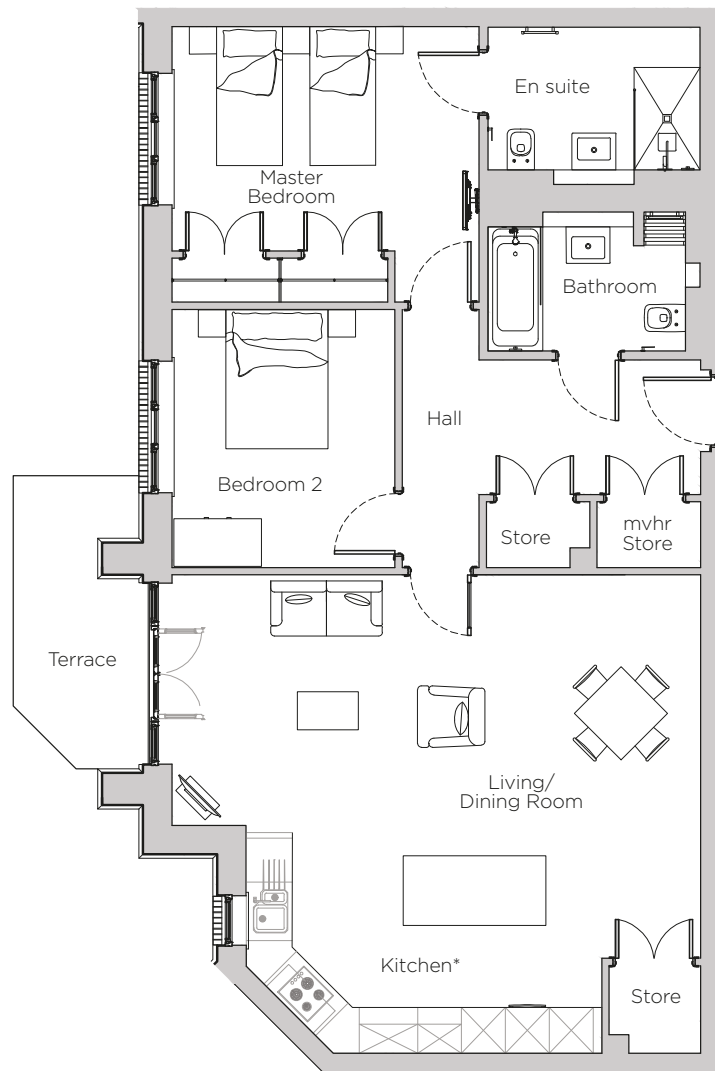


Audley Stanbridge Earls

Apartment 07
Kirkeby Court, Ground Floor

Plot H01



*Kitchen layout to be confirmed

Internal Measurements	Metric (m)	Imperial (ft)
Living Room & Kitchen	7.23 x 6.54	23'9" x 21'5"
Master Bedroom	4.30 x 3.77	13'9" x 12'4"
Bedroom 2	3.53 x 3.05	11'7" x 10'0"
Terrace	4.00 x 1.84	13'1" x 6'0"

Audley Stanbridge Earls
Awbridge, Nr Romsey, Hampshire, SO51 0GY
01794 278 303
www.audleyvillages.co.uk



Drawings are preliminary and may be subject to change pending detailed design. Furniture for illustration purposes only. Built-in wardrobes in bedrooms have not been included in the overall dimensions. Maximum measurements shown. These pages are intended for marketing purposes only. Designs vary according to plot and all details should be checked at the Sales Office. February 2019.



Audley Stanbridge Earls

Apartment 07
Kirkeby Court, Ground Floor



2 bedroom, ground floor apartment

This spacious apartment has a large open plan kitchen and living room with a private south-west facing terrace. Both bedrooms are large doubles and the master has en suite.

Property specifications:

- Master bedroom with fitted wardrobes and en suite
- Second double bedroom
- Villeroy & Boch guest bathroom
- SieMatic kitchen with open plan living room
- South-west facing terrace
- Hallway storage



Audley Stanbridge Earls
Awbridge, Nr Romsey, Hampshire, SO51 0GY
01794 278 303
www.audleyvillages.co.uk

