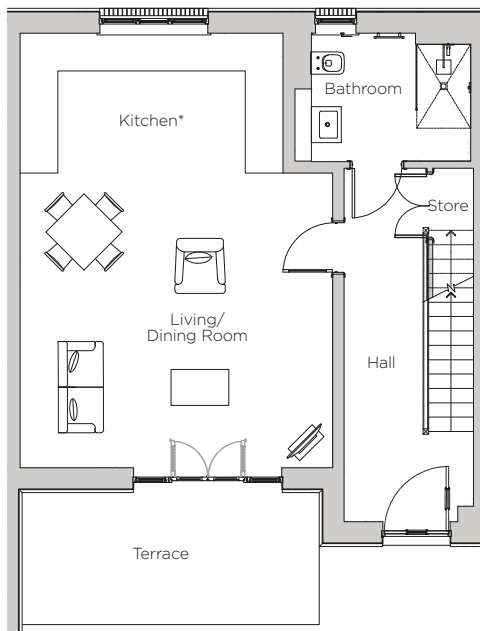


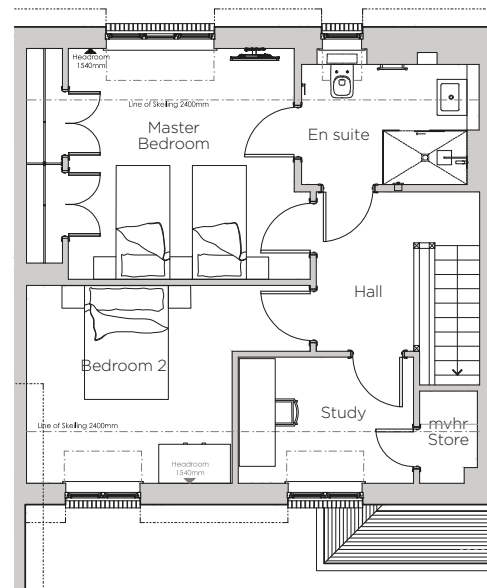
Audley Stanbridge Earls

Cottage 05
Kirkeby Court

Plot G02



Ground Floor Plan



First Floor Plan

*Kitchen layout to be confirmed

Internal Measurements	Metric (m)	Imperial (ft)
Living Room & Kitchen	7.26 x 5.22	23'10" x 17'2"
Master Bedroom	4.04 x 3.86	13'3" x 12'8"
Bedroom 2	4.74 x 3.31	15'7" x 10'10"
Study	2.93 x 2.11	9'7" x 6'11"



Audley Stanbridge Earls
Awbridge, Nr Romsey, Hampshire, SO51 0GY
01794 278 303
www.audleyvillages.co.uk

Drawings are preliminary and may be subject to change pending detailed design. Furniture for illustration purposes only. Built-in wardrobes in bedrooms have not been included in the overall dimensions. Maximum measurements shown. These pages are intended for marketing purposes only. Designs vary according to plot and all details should be checked at the Sales Office. February 2019.



Audley Stanbridge Earls

Cottage 05
Kirkeby Court



3 bedroom cottage

With easy access to the Audley Club, this three bedroom cottage is perfectly located within the village.

Property specifications:

- South-facing terrace
- Open plan luxury kitchen with living room
- Downstairs Villeroy & Boch bathroom
- Master bedroom with double wardrobes and en suite
- Second double bedroom
- Third room perfect for use as a study, single room or hobbies room

Audley Stanbridge Earls
Awbridge, Nr Romsey, Hampshire, SO51 0GY
01794 278 303
www.audleyvillages.co.uk

