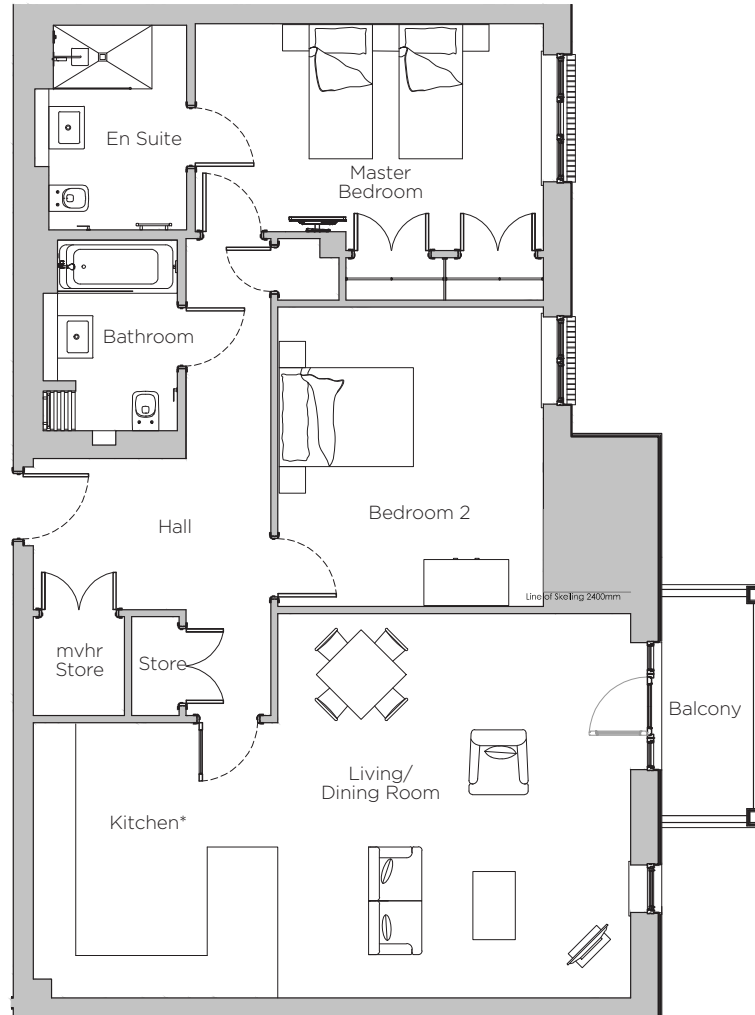


# Audley Stanbridge Earls

Apartment 17  
Kirkeby Court, First Floor

Plot H13



\*Kitchen layout to be confirmed

Internal Measurements	Metric (m)	Imperial (ft)
Kitchen/Living/Dining Room	8.46 x 5.45	27'9" x 17'11"
Master Bedroom	4.93 x 3.22	16'2" x 10'7"
Bedroom 2	4.24 x 3.76	13'11" x 12'4"
Balcony	3.10 x 1.30	10'2" x 4'3"



Audley Stanbridge Earls  
Awbridge, Nr Romsey, Hampshire SO51 0GY  
01794 278 303  
[www.audleyvillages.co.uk](http://www.audleyvillages.co.uk)

Drawings are preliminary and may be subject to change pending detailed design. Furniture for illustration purposes only. Built-in wardrobes in bedrooms have not been included in the overall dimensions. Maximum measurements shown. These pages are intended for marketing purposes only. Designs vary according to plot and all details should be checked at the Sales Office. February 2019.



# Audley Stanbridge Earls

Apartment 17  
Kirkeby Court, First Floor



## 2 bedroom, first floor apartment

Located close to the Audley Club and the swimming pool, this first floor apartment is a gem in the village. The luxury kitchen has integrated appliances and is open plan with living room.

Property specifications:

- Master bedroom with en suite
- Second double bedroom
- Guest bathroom
- Open plan kitchen and living room with private balcony
- SieMatic kitchen with handleless units



Audley Stanbridge Earls  
Awbridge, Nr Romsey, Hampshire SO51 0GY  
01794 278 303  
[www.audleyvillages.co.uk](http://www.audleyvillages.co.uk)

