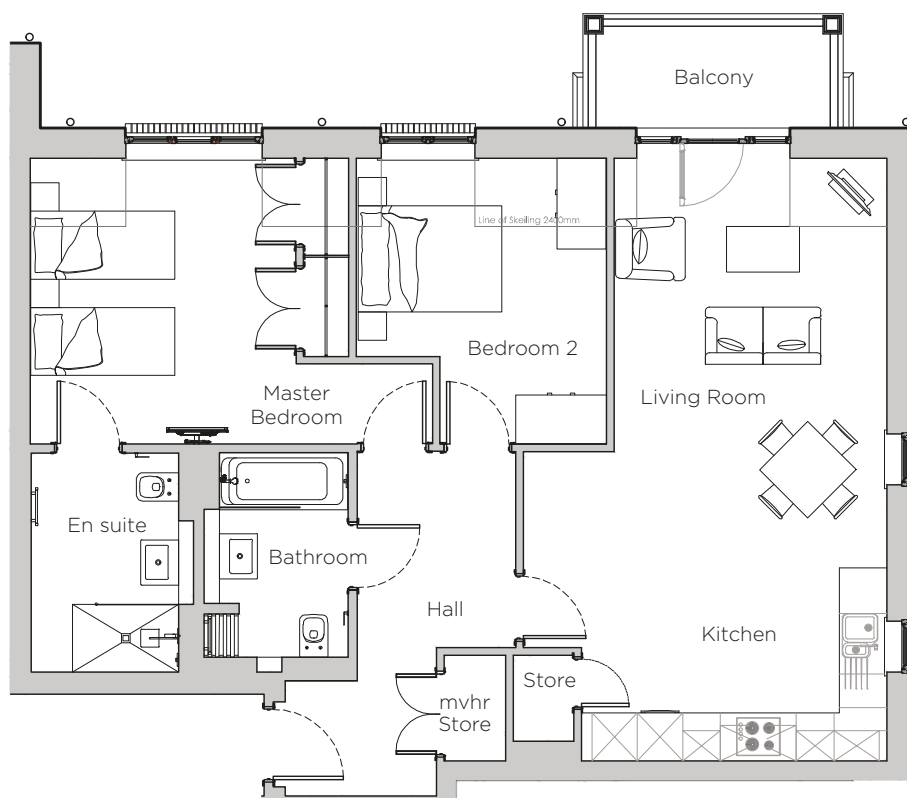


Audley Stanbridge Earls

Apartment 09
Nightingale Hall, First Floor

Plot L09



Internal Measurements	Metric (m)	Imperial (ft)
Living Room/Kitchen	7.97 x 4.81	26'2" x 15'9"
Master Bedroom	5.32 x 3.78	17'5" x 12'5"
Bedroom 2	3.78 x 3.31	12'5" x 10'10"
Balcony	3.10 x 1.34	10'2" x 4'5"

Audley Stanbridge Earls
Awbridge, Nr Romsey, Hampshire SO51 0GY
01794 278 303
www.audleyvillages.co.uk

Drawings are preliminary and may be subject to change pending detailed design. Furniture for illustration purposes only. Built-in wardrobes in bedrooms have not been included in the overall dimensions. Maximum measurements shown. These pages are intended for marketing purposes only. Designs vary according to plot and all details should be checked at the Sales Office. December 2018



Audley Stanbridge Earls

Apartment 09
Nightingale Hall, First Floor

Plot L09



2 bedroom, first floor apartment

This first floor, two bedroom apartment has easy access to the Audley Club with its swimming pool, gym and bistro. The apartment has a fully fitted SieMatic kitchen, two double bedrooms – one with an en suite – and a guest bathroom.

Property specifications:

- Luxury SieMatic kitchen with Corian worktops, Bosch washer dryer and integrated cooking appliances
- Private balcony
- Master bedroom with en suite walk-in shower
- Villeroy & Boch bathroom
- Second double bedroom
- Hallway storage



Audley Stanbridge Earls
Awbridge, Nr Romsey, Hampshire SO51 0GY
01794 278 303
www.audleyvillages.co.uk

