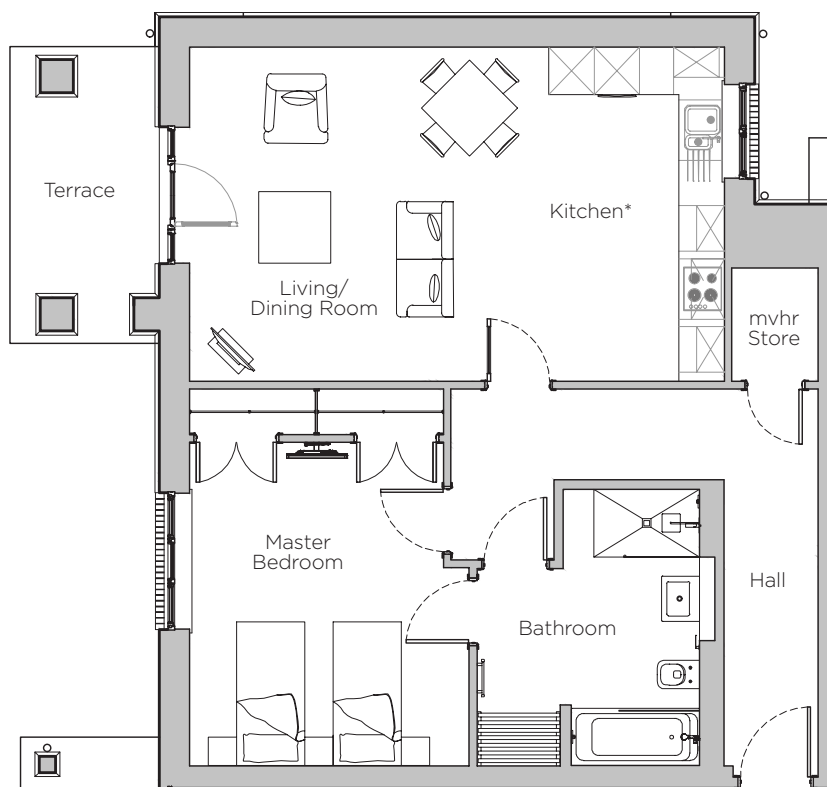


Audley Stanbridge Earls

Apartment 04
Gallop Place, Ground Floor

Plot J04



*Kitchen layout to be confirmed

Internal Measurements	Metric (m)	Imperial (ft)
Living Room & Kitchen	7.07 x 4.42	23'2" x 14'6"
Master Bedroom	4.27 x 3.70	14'1" x 12'2"
Terrace	3.93 x 1.98	12'11" x 6'6"

Audley Stanbridge Earls
Awbridge, Nr Romsey, Hampshire SO51 0GY
01794 278 303
www.audleyvillages.co.uk

Drawings are preliminary and may be subject to change pending detailed design. Furniture for illustration purposes only. Built-in wardrobes in bedrooms have not been included in the overall dimensions. Maximum measurements shown. These pages are intended for marketing purposes only. Designs vary according to plot and all details should be checked at the Sales Office. January 2019



Audley Stanbridge Earls

Apartment 04
Gallop Place, Ground Floor



1 bedroom, ground floor apartment

Situated on the ground floor, the bedroom has fitted double wardrobes and a Jack & Jill bathroom with a bath and walk-in shower. The open plan kitchen and living room leads out to a private terrace.

Property specifications:

- Double bedroom with fitted wardrobes
- Bathroom with bath and walk-in shower, with Jack & Jill doors from bedroom and hallway
- Luxury SieMatic kitchen with Corian worktops, Bosch washer dryer and integrated cooking appliances
- Private terrace
- Ground floor apartment



Audley Stanbridge Earls
Awbridge, Nr Romsey, Hampshire SO51 0GY
01794 278 303
www.audleyvillages.co.uk

