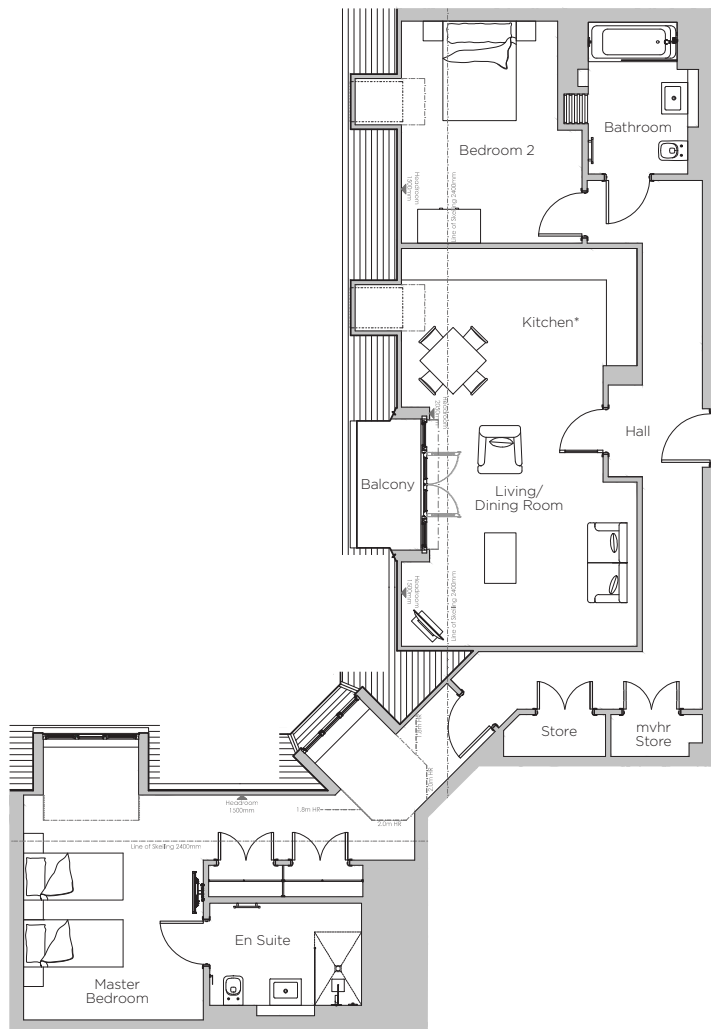


Audley Stanbridge Earls

Apartment 27
Kirkeby Court, Second Floor

Plot H18



*Kitchen layout to be confirmed

Internal Measurements	Metric (m)	Imperial (ft)
Living Room & Kitchen	7.60 x 4.50	24'11" x 14'9"
Master Bedroom	7.47 x 4.29	24'6" x 14'1"
Bedroom 2	4.24 x 3.45	13'11" x 11'4"
Balcony	2.43 x 1.22	8'0" x 4'0"

Audley Stanbridge Earls
Awbridge, Nr Romsey, Hampshire SO51 0GY
01794 278 303
www.audleyvillages.co.uk

Drawings are preliminary and may be subject to change pending detailed design. Furniture for illustration purposes only. Built-in wardrobes in bedrooms have not been included in the overall dimensions. Maximum measurements shown. These pages are intended for marketing purposes only. Designs vary according to plot and all details should be checked at the Sales Office. February 2019.



Audley Stanbridge Earls

Apartment 27
Kirkeby Court, Second Floor



3 bedroom, second floor apartment

Located on the second floor, this impressive apartment has a very generous master bedroom with a dedicated hallway, en suite and built-in wardrobes. The open plan living space leads onto a private, south-west facing balcony.

Property specifications:

- Large master bedroom with separate hallway, en suite and built-in wardrobes
- Second double bedroom
- Villeroy & Boch guest bathroom
- Luxury SieMatic kitchen with Corian worktops, Bosch washer dryer and integrated cooking appliances
- Generous hallway storage
- South-west facing balcony

Audley Stanbridge Earls
Awbridge, Nr Romsey, Hampshire SO51 0GY
01794 278 303
www.audleyvillages.co.uk

