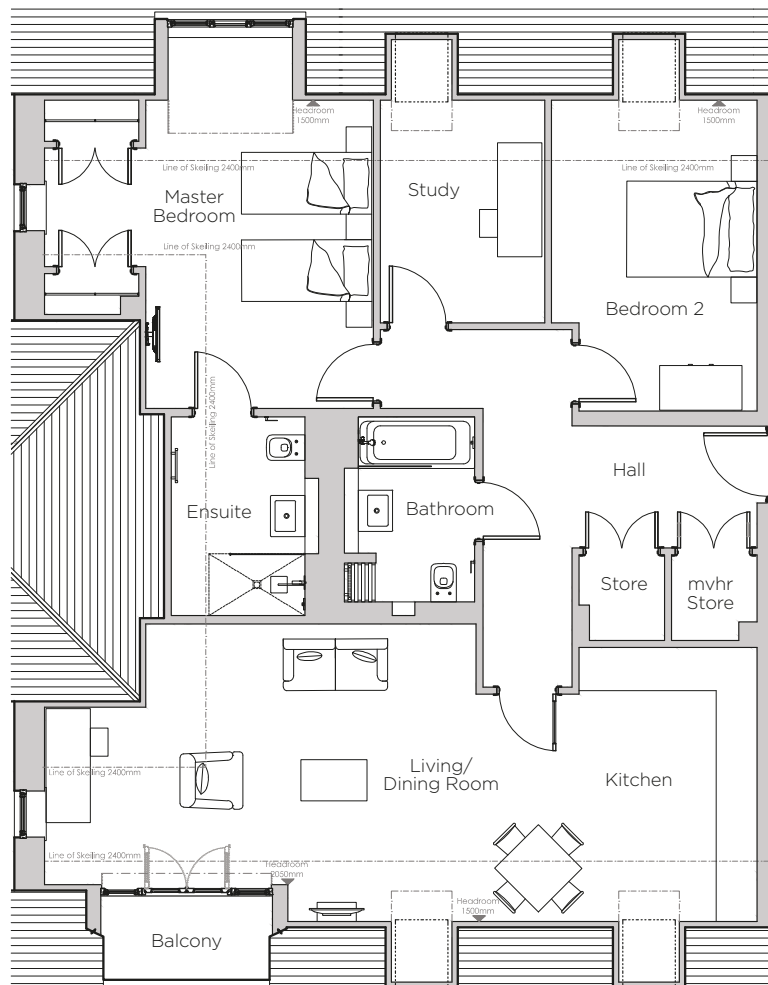


Audley Stanbridge Earls

Apartment 22
Kirkeby Court, Second Floor

Plot H23



*Kitchen layout to be confirmed

Internal Measurements	Metric (m)	Imperial (ft)
Living Room & Kitchen	10.40 x 4.34	34'1" x 14'3"
Master Bedroom	4.80 x 4.50	15'9" x 14'9"
Bedroom 2	4.54 x 2.99	14'11" x 9'10"
Study	3.25 x 2.40	10'8" x 7'0"
Balcony	2.51 x 1.22	8'3" x 4'0"



Audley Stanbridge Earls
Awbridge, Nr Romsey, Hampshire, SO51 0GY
01794 278 303
www.audleyvillages.co.uk

Drawings are preliminary and may be subject to change pending detailed design. Furniture for illustration purposes only. Built-in wardrobes in bedrooms have not been included in the overall dimensions. Maximum measurements shown. These pages are intended for marketing purposes only. Designs vary according to plot and all details should be checked at the Sales Office. February 2019.



Audley Stanbridge Earls

Apartment 22
Kirkeby Court, Second Floor



3 bedroom, second floor apartment

This spacious second floor apartment has a large open plan kitchen and dual aspect living/dining room with a south facing balcony. There is a large master bedroom with en suite and built in wardrobes, a generous second bedroom and a useful study/third bedroom.

Property specifications:

- Open plan kitchen and living area with south facing balcony
- Master bedroom with fitted double wardrobes and en suite
- Second double bedroom
- Study/third bedroom
- Luxury SieMatic kitchen
- Villeroy & Boch guest bathroom
- Plentiful hallway storage

Audley Stanbridge Earls
Awbridge, Nr Romsey, Hampshire, SO51 0GY
01794 278 303
www.audleyvillages.co.uk

