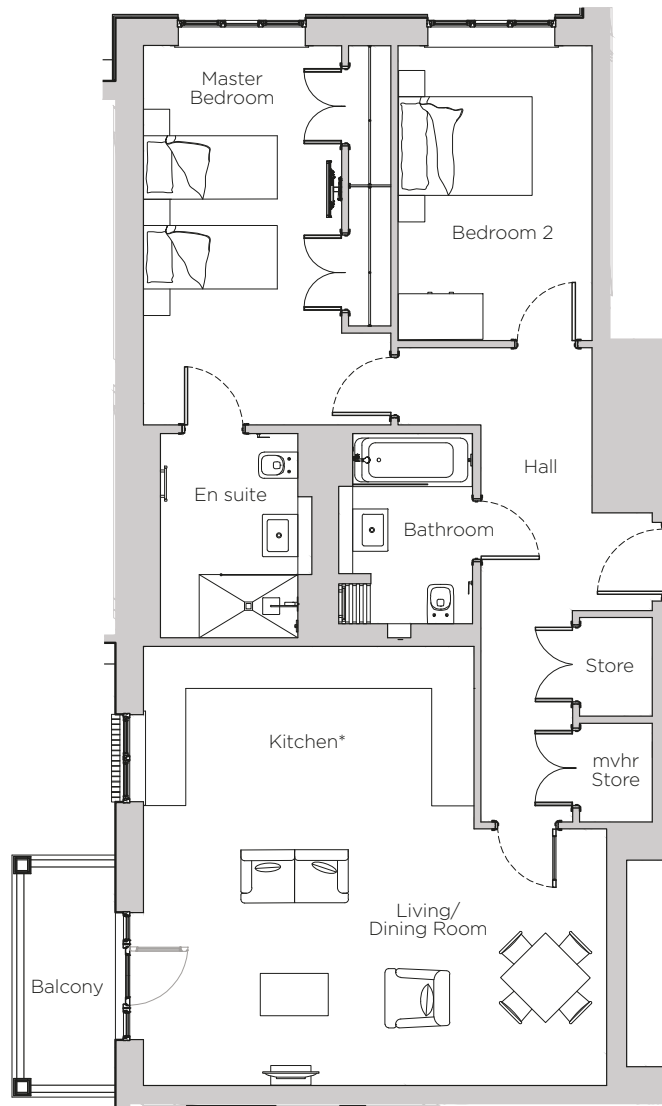


Audley Stanbridge Earls

Apartment 20
Kirkeby Court, First Floor

Plot H10



*Kitchen layout to be confirmed

Internal Measurements	Metric (m)	Imperial (ft)
Living Room & Kitchen	6.58 x 6.23	21'7" x 20'5"
Master Bedroom	5.39 x 3.51	17'8" x 11'6"
Bedroom 2	4.19 x 2.76	13'9" x 9'1"
Balcony	3.10 x 1.30	10'2" x 4'3"



Audley Stanbridge Earls
Awbridge, Nr Romsey, Hampshire, SO51 0GY
01794 278 303
www.audleyvillages.co.uk

Drawings are preliminary and may be subject to change pending detailed design. Furniture for illustration purposes only. Built-in wardrobes in bedrooms have not been included in the overall dimensions. Maximum measurements shown. These pages are intended for marketing purposes only. Designs vary according to plot and all details should be checked at the Sales Office. February 2019.



Audley Stanbridge Earls

Apartment 20
Kirkeby Court, First Floor



2 bedroom, first floor apartment

Accessible via stairs or the lift, this first floor apartment has a large master bedroom with en suite. The luxury kitchen is open plan with living room and there is a private south-west facing balcony.

Property specifications:

- SieMatic kitchen with Corian worktops, Bosch washer dryer and integrated cooking appliances
- Open plan kitchen and living room with south-west facing balcony
- Master bedroom with walk-in shower in the en suite
- Second double bedroom
- Guest bathroom
- Plenty of hallway storage

Audley Stanbridge Earls
Awbridge, Nr Romsey, Hampshire, SO51 0GY
01794 278 303
www.audleyvillages.co.uk

