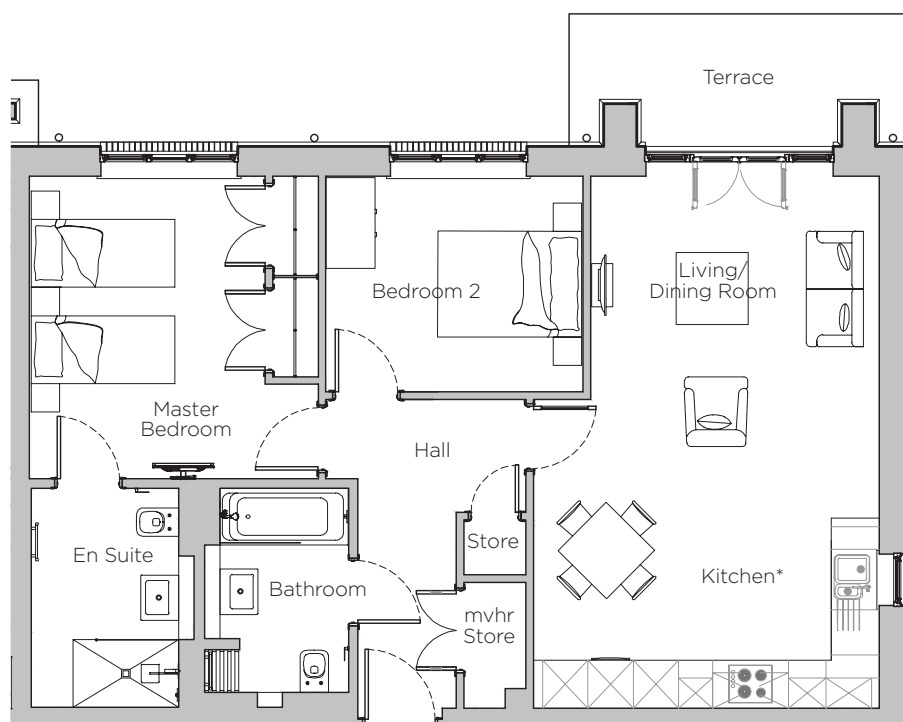


Audley Stanbridge Earls

Apartment 01
Gallop Place, Ground Floor

Plot J01



*Kitchen layout to be confirmed

Internal Measurements	Metric (m)	Imperial (ft)
Living Room & Kitchen	7.03 x 4.57	23'1" x 15'0"
Master Bedroom	4.00 x 3.82	13'1" x 12'6"
Bedroom 2	3.40 x 2.85	11'2" x 9'4"
Terrace	4.50 x 1.75	14'9" x 5'9"

Audley Stanbridge Earls
Awbridge, Nr Romsey, Hampshire SO51 0GY
01794 278 303
www.audleyvillages.co.uk

Drawings are preliminary and may be subject to change pending detailed design. Furniture for illustration purposes only. Built-in wardrobes in bedrooms have not been included in the overall dimensions. Maximum measurements shown. These pages are intended for marketing purposes only. Designs vary according to plot and all details should be checked at the Sales Office. January 2019



Audley Stanbridge Earls

Apartment 01
Gallop Place, Ground Floor



2 bedroom, ground floor apartment

This two bedroom apartment has a large south-east facing terrace which is accessed from the living room. With an open plan SieMatic kitchen this apartment offers plenty of space for entertaining guests. The master bedroom has an en suite, while there is an additional second bedroom and guest bathroom.

Property specifications:

- Master bedroom with fitted wardrobes and en suite
- Second guest bedroom
- Villeroy & Boch bathroom
- Open plan luxury kitchen and living room
- Luxury SieMatic kitchen with Corian worktops, Bosch washer dryer and integrated cooking appliances
- Private terrace
- Hallway storage
- Ground floor apartment



Audley Stanbridge Earls
Awbridge, Nr Romsey, Hampshire SO51 0GY
01794 278 303
www.audleyvillages.co.uk

