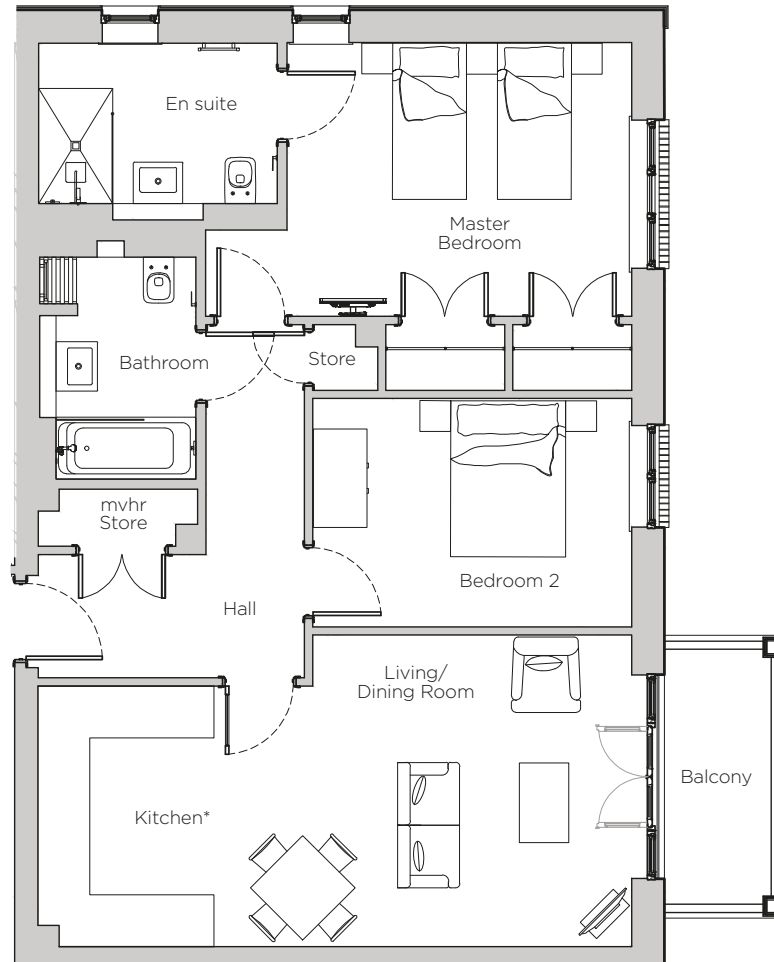


Audley Stanbridge Earls

Apartment 19
Kirkeby Court, First Floor

Plot H11



*Kitchen layout to be confirmed

Internal Measurements	Metric (m)	Imperial (ft)
Living Room & Kitchen	6.95 x 5.10	22'10" x 16'9"
Master Bedroom	4.98 x 3.97	16'4" x 13'0"
Balcony	2.43 x 1.22	8'0" x 4'0"



Audley Stanbridge Earls
Awbridge, Nr Romsey, Hampshire, SO51 0GY
01794 278 303
www.audleyvillages.co.uk

Drawings are preliminary and may be subject to change pending detailed design. Furniture for illustration purposes only. Built-in wardrobes in bedrooms have not been included in the overall dimensions. Maximum measurements shown. These pages are intended for marketing purposes only. Designs vary according to plot and all details should be checked at the Sales Office. February 2019.



Audley Stanbridge Earls

Apartment 19
Kirkeby Court, First Floor



2 bedroom, first floor apartment

The private balcony of the first floor apartment is accessible from the open plan kitchen and spacious living room. With an en suite, the master bedroom also has fitted wardrobes and the second bedroom is a good size.

Property specifications:

- Master bedroom with fitted double wardrobes
- En suite with walk-in shower accessible from master bedroom
- Large second double bedroom
- Villeroy & Boch guest bathroom
- Luxury kitchen open plan with living room
- Private balcony



Audley Stanbridge Earls
Awbridge, Nr Romsey, Hampshire, SO51 0GY
01794 278 303
www.audleyvillages.co.uk

