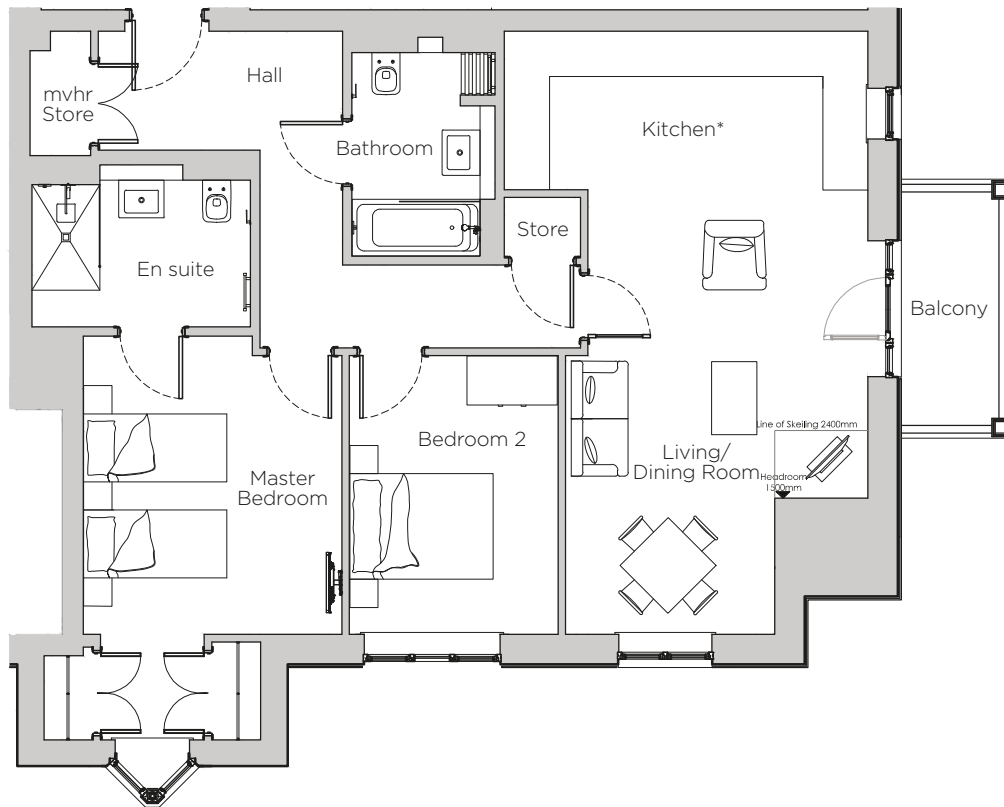


# Audley Stanbridge Earls

Apartment 16  
Kirkeby Court, First Floor

Plot H14



\*Kitchen layout to be confirmed

Internal Measurements	Metric (m)	Imperial (ft)
Living Room & Kitchen	8.00 x 4.83	26'3" x 15'10"
Master Bedroom	3.96 x 3.43	13'0" x 11'3"
Bedroom 2	3.70 x 2.77	12'2" x 9'1"
Balcony	3.10 x 1.30	10'2" x 4'3"

Audley Stanbridge Earls  
Awbridge, Nr Romsey, Hampshire, SO51 0GY  
01794 278 303  
[www.audleyvillages.co.uk](http://www.audleyvillages.co.uk)

Drawings are preliminary and may be subject to change pending detailed design. Furniture for illustration purposes only. Built-in wardrobes in bedrooms have not been included in the overall dimensions. Maximum measurements shown. These pages are intended for marketing purposes only. Designs vary according to plot and all details should be checked at the Sales Office. February 2019.



# Audley Stanbridge Earls

Apartment 16  
Kirkeby Court, First Floor



## 2 bedroom, first floor apartment

Situated on the first floor, this is a large two bedroom apartment. The SieMatic kitchen is open plan with the living room, which has a private balcony.

Property specifications:

- Luxury kitchen open plan with living room
- Private balcony
- Master bedroom with fitted double wardrobes and en suite
- Villeroy & Boch bathroom
- Second bedroom
- Hallway storage

Audley Stanbridge Earls  
Awbridge, Nr Romsey, Hampshire, SO51 0GY  
01794 278 303  
[www.audleyvillages.co.uk](http://www.audleyvillages.co.uk)

