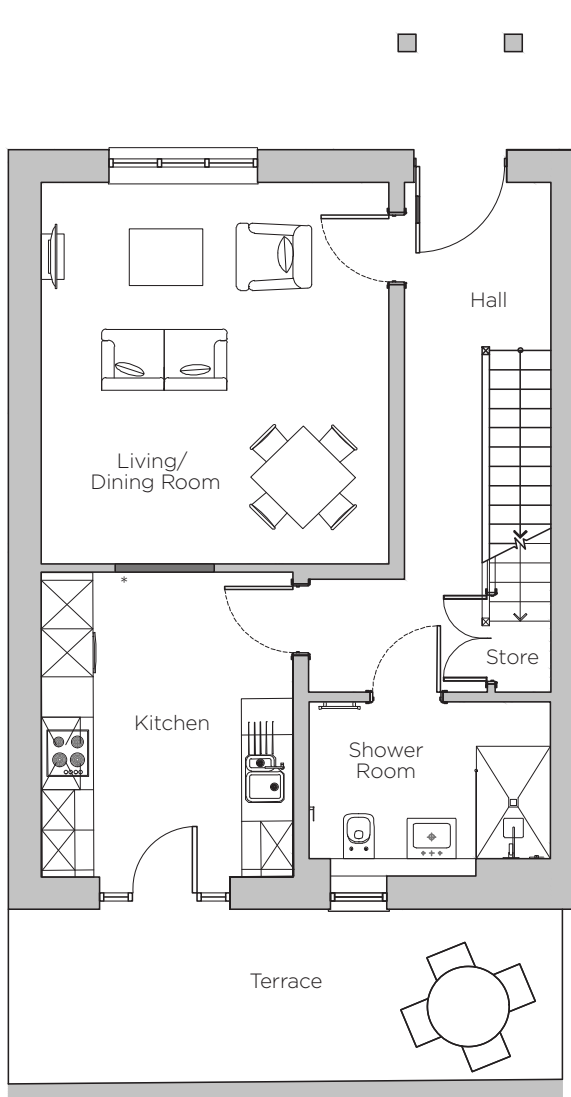
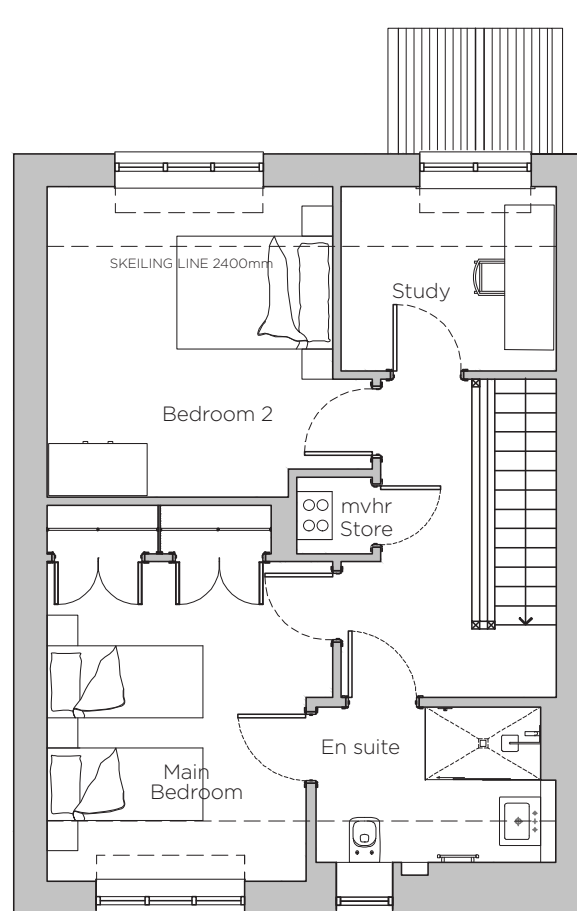


# Audley Stanbridge Earls

Cottage 14, Walled Garden (Plot K09)



Ground Floor Plan

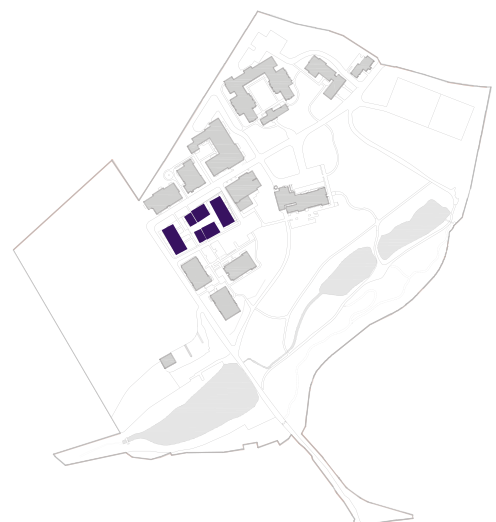


First Floor Plan

\* Open plan option available

Internal Measurements	Metric (m)	Imperial (ft)
Living/Dining Room	4.24 x 4.74	13'11" x 15'7"
Kitchen	3.79 x 3.07	12'5" x 10'1"
Main Bedroom	3.97 x 3.48	13'0" x 11'5"
Bedroom 2	3.96 x 3.86	13'0" x 12'8"
Study	2.62 x 2.30	8'7" x 7'7"
Terrace	6.75 x 2.17	22'2" x 7'1"
Skeliling	1.80	5'11"

Audley Stanbridge Earls  
 Awbridge, Nr Romsey, Hampshire SO51 0GY  
 01794 278 303  
[www.audleyvillages.co.uk](http://www.audleyvillages.co.uk)



Drawings are preliminary and may be subject to change pending detailed design. Furniture for illustration purposes only. Built-in wardrobes in bedrooms have not been included in the overall dimensions. Maximum measurements shown. These pages are intended for marketing purposes only. Designs vary according to plot and all details should be checked at the Sales Office. September 2018



# Audley Stanbridge Earls

Cottage 14, Walled Garden (Plot K09)



## Two bedroom plus study cottage

This semi-detached cottage has a private south-facing terrace accessed from the luxury SieMatic kitchen. Upstairs there is a main bedroom with Jack & Jill shower room, additional guest bedroom and study.

Property specifications:

- Large living/dining room adjacent to the kitchen
- Fully fitted kitchen
- South-facing private terrace
- Main bedroom with built-in double wardrobes
- Study upstairs
- Second double bedroom

Audley Stanbridge Earls  
Awbridge, Nr Romsey, Hampshire SO51 0GY  
01794 278 303  
[www.audleyvillages.co.uk](http://www.audleyvillages.co.uk)

