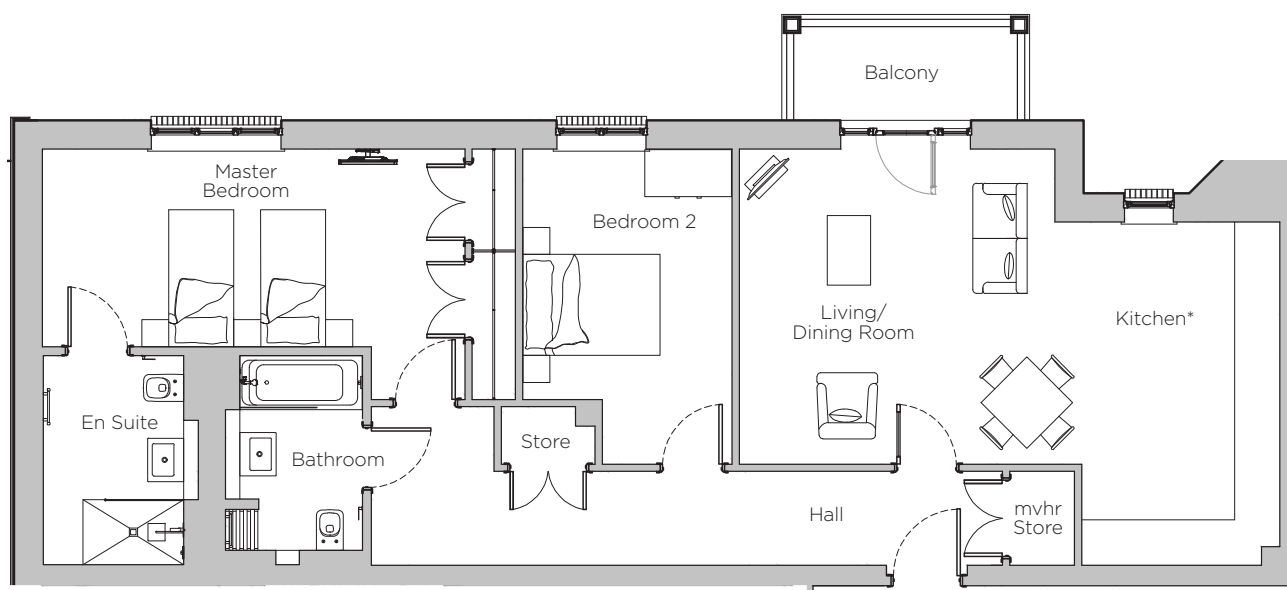


Audley Stanbridge Earls

Apartment 12
Kirkeby Court, First Floor

Plot H17



*Kitchen layout to be confirmed

Internal Measurements	Metric (m)	Imperial (ft)
Living Room & Kitchen	7.50 x 4.76	24'7" x 15'7"
Master Bedroom	5.86 x 3.47	19'3" x 11'5"
Bedroom 2	4.37 x 2.91	14'4" x 9'7"
Balcony	3.10 x 1.30	10'2" x 4'3"

Audley Stanbridge Earls
Awbridge, Nr Romsey, Hampshire SO51 0GY
01794 278 303
www.audleyvillages.co.uk



Drawings are preliminary and may be subject to change pending detailed design. Furniture for illustration purposes only. Built-in wardrobes in bedrooms have not been included in the overall dimensions. Maximum measurements shown. These pages are intended for marketing purposes only. Designs vary according to plot and all details should be checked at the Sales Office. February 2019.



Audley Stanbridge Earls

Apartment 12
Kirkeby Court, First Floor



2 bedroom, first floor apartment

This spacious first floor apartment has a dual-aspect living/dining room with a south-facing balcony. There are two good sized double bedrooms, and a useful study/third bedroom.

Property specifications:

- Master bedroom with fitted double wardrobes and en suite
- Second double bedroom
- Guest bathroom
- Luxury SieMatic kitchen with Corian worktops, Bosch washer dryer and integrated cooking appliances
- Open plan kitchen and living room with private balcony
- Hallway storage



Audley Stanbridge Earls
Awbridge, Nr Romsey, Hampshire SO51 0GY
01794 278 303
www.audleyvillages.co.uk

