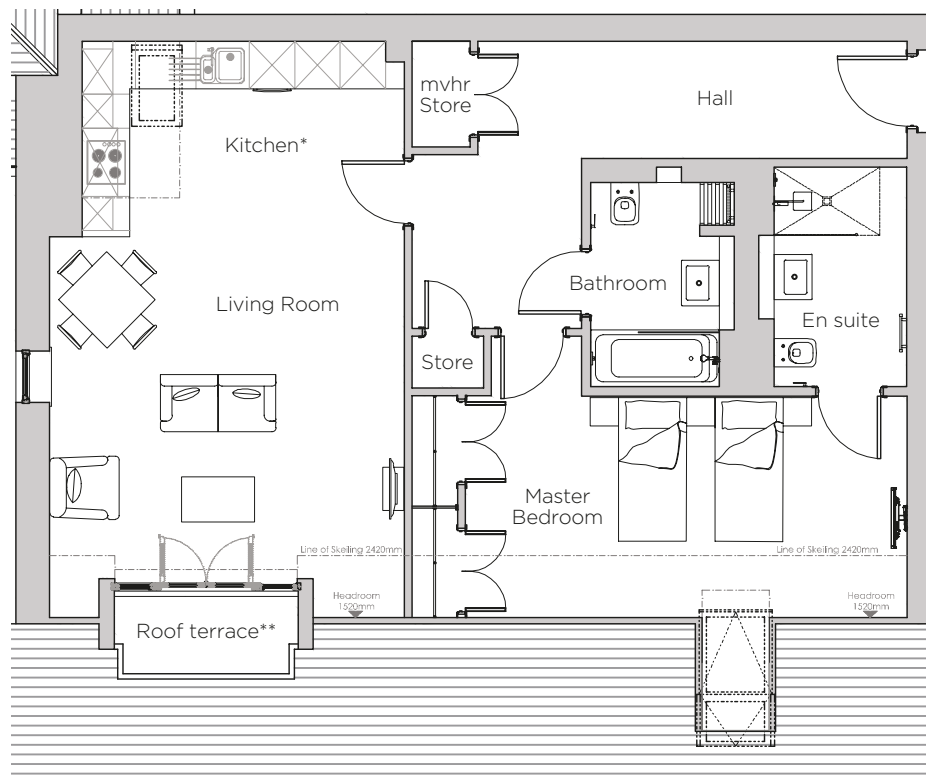


Audley Stanbridge Earls

11 Nightingale Hall
Apartment, second floor

Plot L11



* Kitchen layout to be confirmed

** 150mm step up to roof terrace.

Internal Measurements	Metric (m)	Imperial (ft)
Living Room & Kitchen	7.62 x 4.70	25'0" x 15'5"
Master Bedroom	5.84 x 2.93	19'2" x 9'7"
Balcony	2.43 x 1.02	7'12" x 3'4"

Audley Stanbridge Earls
Awbridge, Nr Romsey, Hampshire, SO51 0GY
01794 278 303
www.audleyvillages.co.uk

Drawings are preliminary and may be subject to change pending detailed design. Furniture for illustration purposes only. Built-in wardrobes in bedrooms have not been included in the overall dimensions. Maximum measurements shown. These pages are intended for marketing purposes only. Designs vary according to plot and all details should be checked at the Sales Office. December 2018



Audley Stanbridge Earls

11 Nightingale Hall
Apartment, second floor

Plot L11



1 bedroom, second floor apartment

This one bedroom apartment is incredibly spacious. There is an open plan SieMatic kitchen and large living room with a private roof terrace. The bedroom is a good size with an en suite and there is a separate guest bathroom.

Property specifications:

- Open plan kitchen and living room with south-facing private roof terrace
- Luxury SieMatic kitchen
- Spacious master bedroom with fitted wardrobes and en suite
- Guest Villeroy & Boch bathroom
- Lift and stair access
- Large hallway with storage

Audley Stanbridge Earls
Awbridge, Nr Romsey, Hampshire, SO51 0GY
01794 278 303
www.audleyvillages.co.uk

