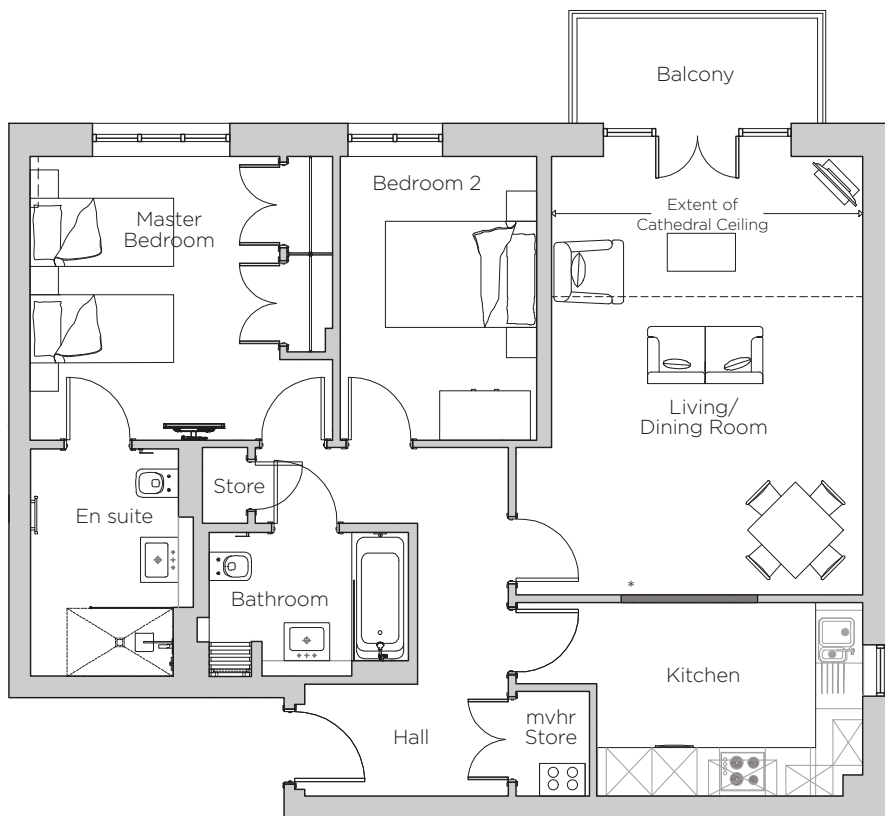


Audley Stanbridge Earls

Apartment 09
Hansard Place, Second Floor

Plot N12



* Open plan option available

Internal Measurements	Metric (m)	Imperial (ft)
Living/Dining Room	5.80 x 4.58	19' 0" x 15' 0"
Kitchen	4.58 x 2.56	15' 0" x 8' 5"
Master Bedroom	4.00 x 3.75	13' 1" x 12' 4"
Bedroom 2	3.75 x 2.60	12' 4" x 8' 6"
Balcony	3.19 x 1.38	10' 4" x 4' 6"
Skeiling Line	2.40	7' 10"



Audley Stanbridge Earls
Awbridge, Nr Romsey, Hampshire, SO51 0GY
01794 278 303
www.audleyvillages.co.uk

Drawings are preliminary and may be subject to change pending detailed design. Furniture for illustration purposes only. Built-in wardrobes in bedrooms have not been included in the overall dimensions. Maximum measurements shown. These pages are intended for marketing purposes only. Designs vary according to plot and all details should be checked at the Sales Office. September 2018



Audley Stanbridge Earls

Apartment 09
Hansard Place, Second Floor

Plot N12



2 bedroom, second floor apartment

This second floor apartment has two large double bedrooms, with an en suite and fitted wardrobes in the master. The kitchen is fitted with luxury SieMatic handleless units and is adjoined by the spacious living/dining room with a balcony.

Property specifications:

- Fully fitted luxury SieMatic kitchen with handleless units
- Balcony accessed from the large living/dining room
- Large second bedroom
- Second Villeroy & Boch bathroom
- Master bedroom with fitted wardrobes and en suite
- Hallway store cupboard



Audley Stanbridge Earls
Awbridge, Nr Romsey, Hampshire, SO51 0GY
01794 278303
www.audleyvillages.co.uk

