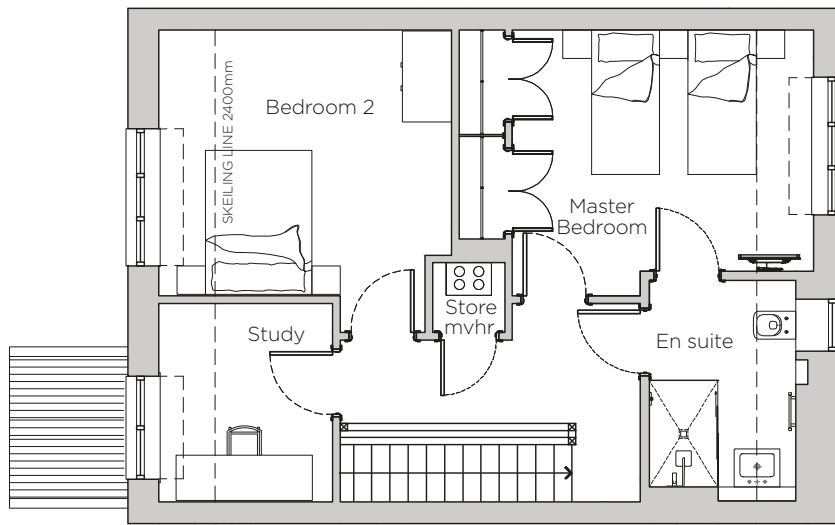
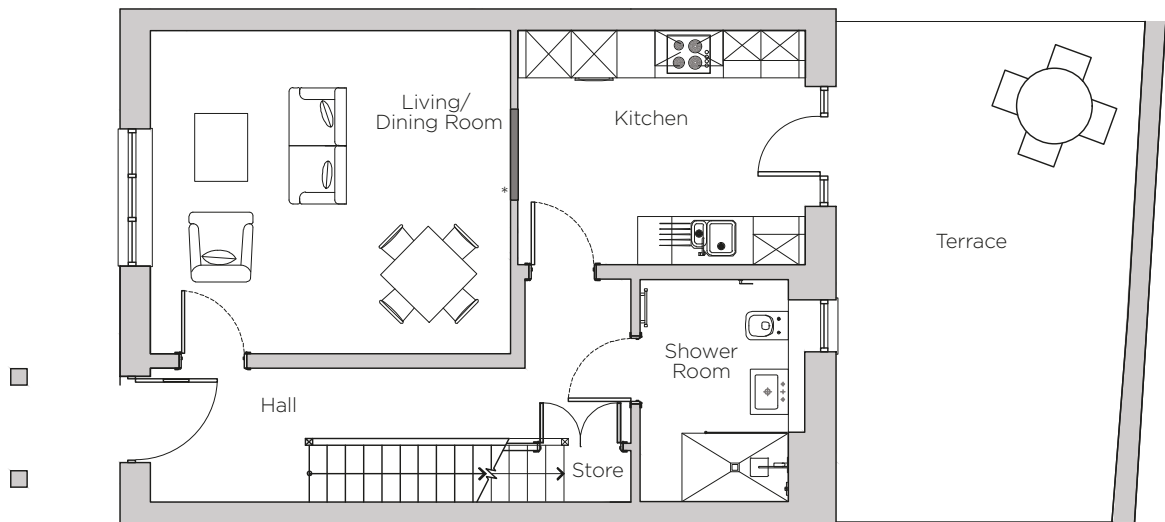


# Audley Stanbridge Earls

Cottage 9, Walled Garden (Plot K05)



First Floor Plan



Ground Floor Plan

\* Open plan option available

Internal Measurements	Metric (m)	Imperial (ft)
Living/Dining Room	4.74 x 4.25	15'7" x 13'11"
Kitchen	3.78 x 3.08	12'5" x 10'1"
Master Bedroom	3.97 x 3.50	13'0" x 11'6"
Bedroom 2	3.98 x 3.86	13'1" x 12'8"
Study	2.61 x 2.29	8'7" x 7'6"
Terrace	6.60 x 4.02	21'8" x 13'2"
Skeiling	1.80	5'11"

Audley Stanbridge Earls  
 Awbridge, Nr Romsey, Hampshire, SO51 0GY  
 01794 278 303  
[www.audleyvillages.co.uk](http://www.audleyvillages.co.uk)

Drawings are preliminary and may be subject to change pending detailed design. Furniture for illustration purposes only. Built-in wardrobes in bedrooms have not been included in the overall dimensions. Maximum measurements shown. These pages are intended for marketing purposes only. Designs vary according to plot and all details should be checked at the Sales Office.  
 September 2018



# Audley Stanbridge Earls

Cottage 9, Walled Garden (Plot K05)



## 3 bedroom cottage

A mid-terrace cottage located in the Walled Garden. Located upstairs, this property has a master bedroom, guest bedroom and third room, perfect for use as a study or hobbies room. Downstairs there is a living/dining room with access to a large kitchen leading out to a spacious terrace.

Property specifications:

- Downstairs shower room
- Luxury SieMatic kitchen with access to large terrace
- Living/dining room at the front of the cottage
- Hallway storage
- Master bedroom with Jack and Jill bathroom
- Two additional rooms upstairs

Audley Stanbridge Earls  
Awbridge, Nr Romsey, Hampshire, SO51 0GY  
01794 278 303  
[www.audleyvillages.co.uk](http://www.audleyvillages.co.uk)

