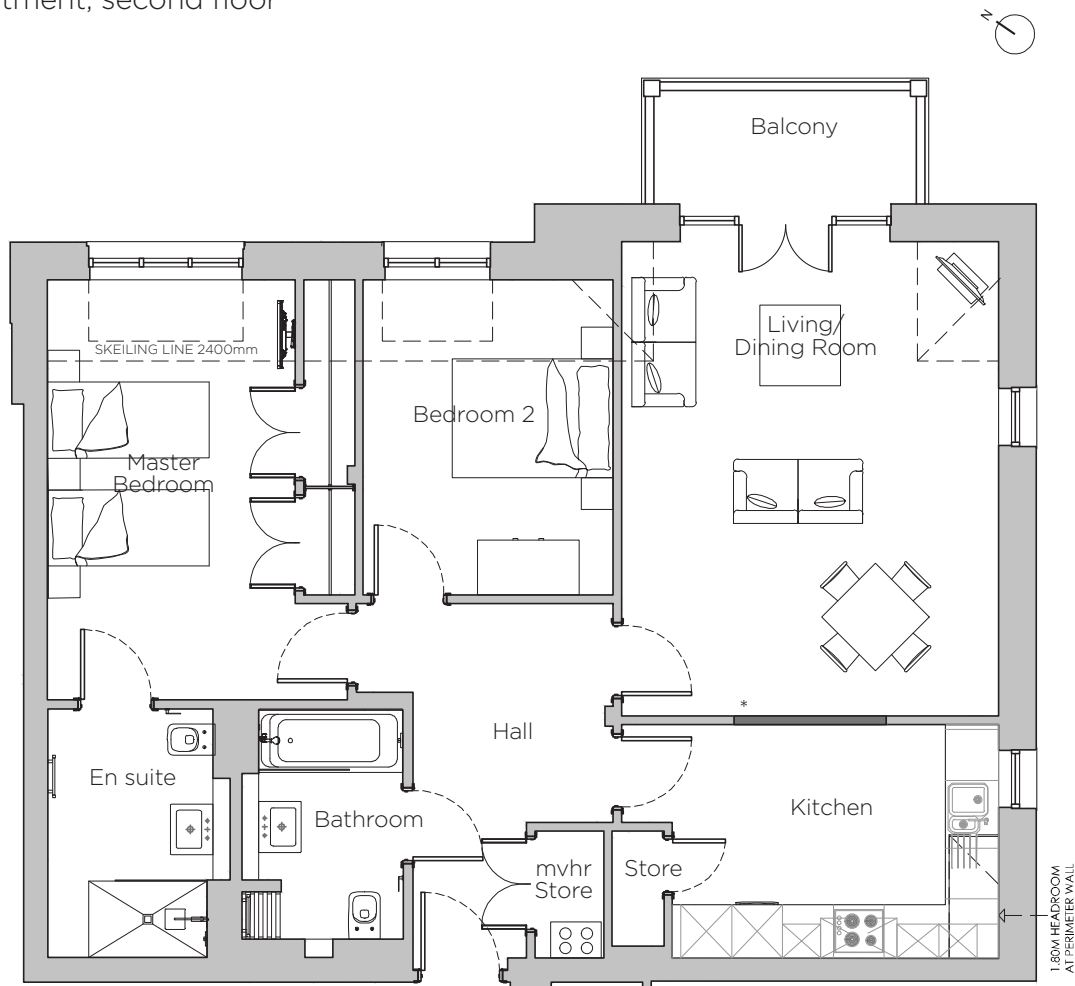


Audley Stanbridge Earls

9 Montgomery Hall,
Apartment, second floor

Plot M09



* Open plan option available

Internal Measurements	Metric (m)	Imperial (ft)
Living/Dining Room	4.45 x 5.60	14'7" x 18'4"
Kitchen	4.45 x 2.76	14'7" x 9'1"
Master Bedroom	3.54 x 4.95	11'7" x 16'3"
Bedroom 2	2.95 x 3.72	9'8" x 12'2"
Balcony	3.10 x 1.30	10'2" x 4'3"
Skeiling	2.40	7'10"



Audley Stanbridge Earls
Awbridge, Nr Romsey, Hampshire, SO51 0ZS
01794 278303
www.audleyvillages.co.uk

Drawings are preliminary and may be subject to change pending detailed design. Furniture for illustration purposes only. Built-in wardrobes in bedrooms have not been included in the overall dimensions. Maximum measurements shown. These pages are intended for marketing purposes only. Designs vary according to plot and all details should be checked at the Sales Office. September 2018



Audley Stanbridge Earls

9 Montgomery Hall,
Apartment, second floor

Plot M09



2 bedroom, second floor apartment

A spacious two bedroom apartment with a private balcony which can be accessed from the large living/dining room. This luxury new-build home has been fitted with a SieMatic kitchen and Villeroy & Boch bathrooms.

Property specifications:

- Private balcony adjoins the large living/dining room
- Master bedroom has built-in double wardrobes and en suite walk-in shower
- Second double bedroom
- SieMatic kitchen with Corian worktops
- Second Villeroy & Boch bathroom
- Hallway store cupboard



Audley Stanbridge Earls
Awbridge, Nr Romsey, Hampshire, SO51 0ZS
01794 278303
www.audleyvillages.co.uk

