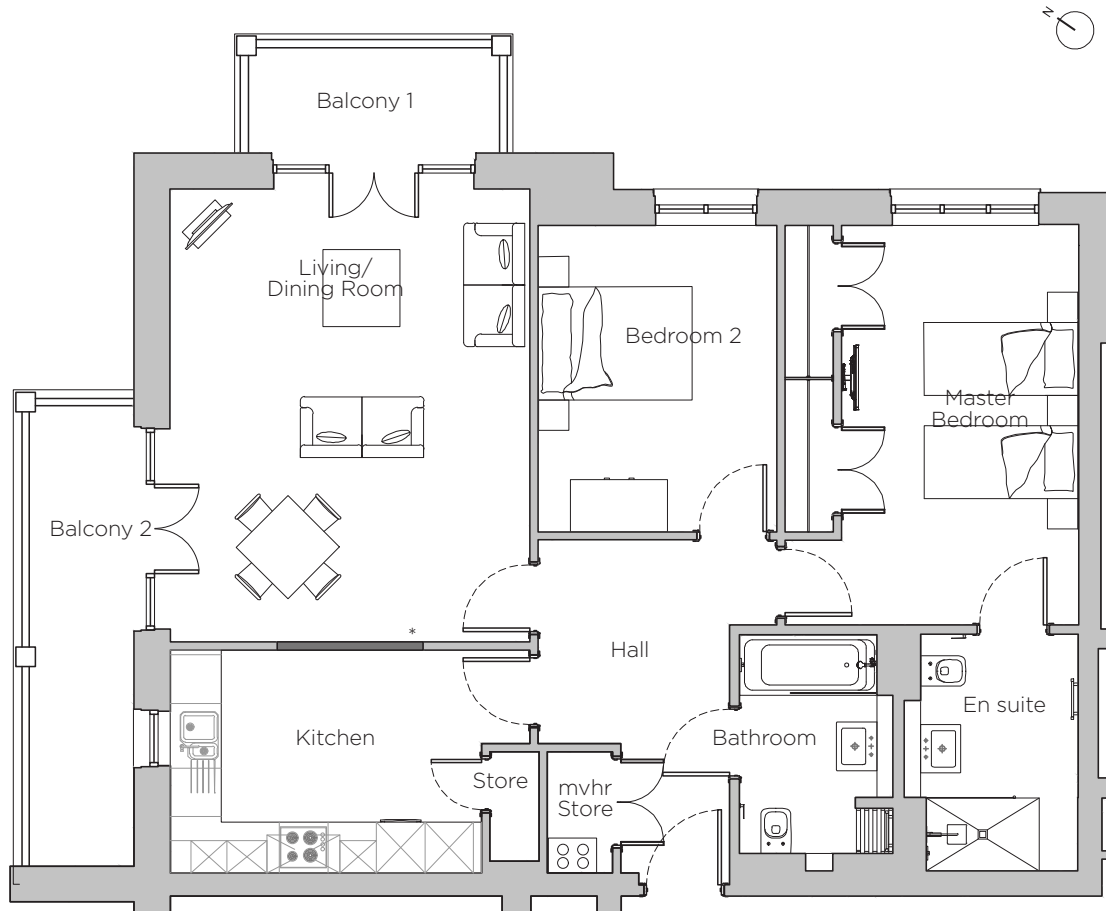


# Audley Stanbridge Earls

8 Montgomery Hall,  
Apartment, first floor

Plot M08



\* Open plan option available

Internal Measurements	Metric (m)	Imperial (ft)
Living/Dining Room	4.45 x 5.60	14'7" x 18'4"
Kitchen	4.45 x 2.76	14'7" x 9'1"
Master Bedroom	3.63 x 4.95	11'11" x 16'3"
Bedroom 2	2.95 x 3.79	9'8" x 12'5"
Balcony 1	3.10 x 1.30	10'2" x 4'3"
Balcony 2	1.30 x 5.70	4'3" x 18'8"



Audley Stanbridge Earls  
Awbridge, Nr Romsey, Hampshire, SO51 0GY  
01794 278 303  
[www.audleyvillages.co.uk](http://www.audleyvillages.co.uk)

Drawings are preliminary and may be subject to change pending detailed design. Furniture for illustration purposes only. Built-in wardrobes in bedrooms have not been included in the overall dimensions. Maximum measurements shown. These pages are intended for marketing purposes only. Designs vary according to plot and all details should be checked at the Sales Office. September 2018



# Audley Stanbridge Earls

8 Montgomery Hall,  
Apartment, first floor

Plot M08



## 2 bedroom, first floor apartment

With two balconies, this is the perfect first floor apartment. Both balconies are accessed via the living/dining room, which has the option to become open plan with the fully-fitted kitchen. The master bedroom has a level access shower in the en suite and the guest bathroom is fitted with Villeroy & Boch sanitaryware.



Property specifications:

- First floor apartment with access via lift or stairs
- Two balconies accessible from the living/dining room
- SieMatic kitchen
- Large master bedroom with en suite
- Second bedroom and guest bathroom



Audley Stanbridge Earls  
Awbridge, Nr Romsey, Hampshire, SO51 0ZS  
01794 278303  
[www.audleyvillages.co.uk](http://www.audleyvillages.co.uk)

