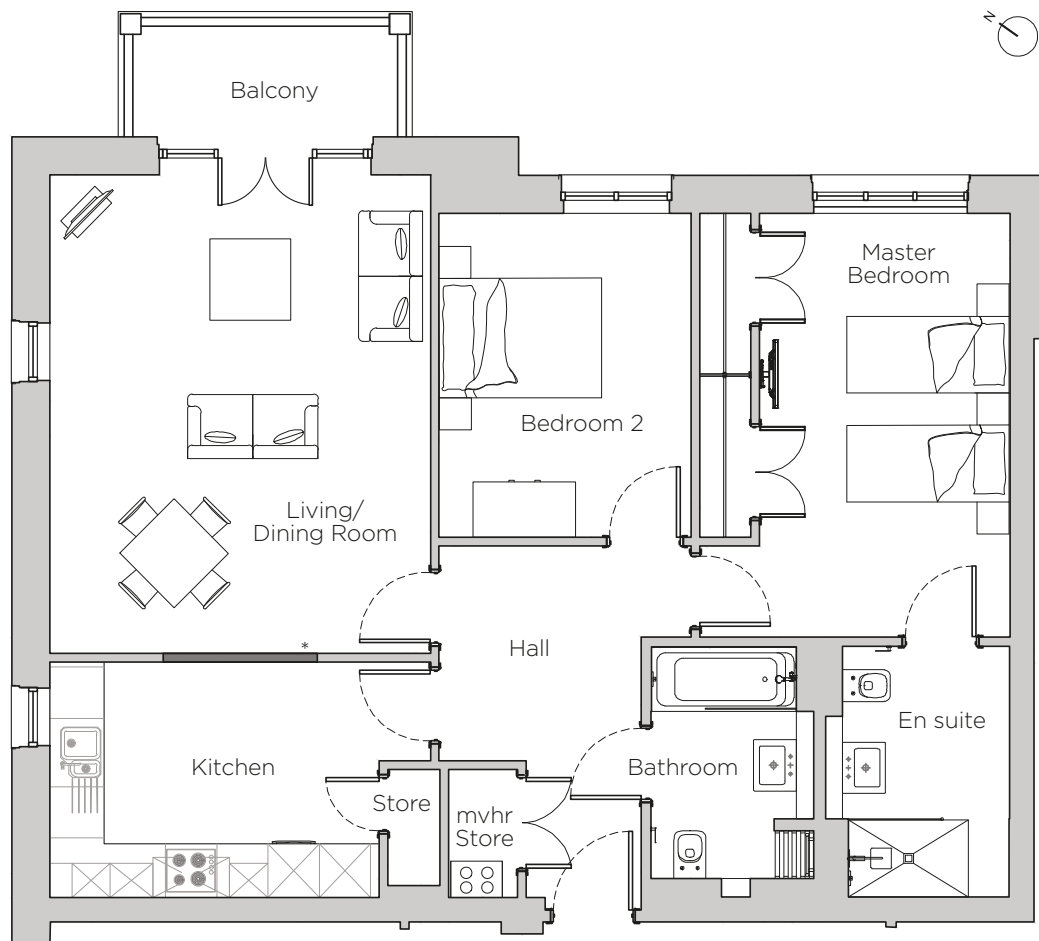


Audley Stanbridge Earls

Apartment 08 (Plot 008)
Beisley Place, First Floor



* Open plan option available

Internal Measurements	Metric (m)	Imperial (ft)
Living/Dining Room	4.45 x 5.60	14'7" x 18'4"
Kitchen	4.45 x 2.76	14'7" x 9'1"
Master Bedroom	3.63 x 4.95	11'11" x 16'3"
Bedroom 2	2.95 x 3.79	9'8" x 12'5"
Balcony	3.10 x 1.30	10'2" x 4'3"



Audley Stanbridge Earls
Awbridge, Nr Romsey, Hampshire, SO51 0GY
01794 278 303
www.audleyvillages.co.uk

Drawings are preliminary and may be subject to change pending detailed design. Furniture for illustration purposes only. Built-in wardrobes in bedrooms have not been included in the overall dimensions. Maximum measurements shown. These pages are intended for marketing purposes only. Designs vary according to plot and all details should be checked at the Sales Office. September 2018



Audley Stanbridge Earls

Apartment 08 (Plot 008)
Beisley Place, First Floor



Two bedroom, first floor apartment

A gorgeous two bedroom apartment located close to the lakes and playing fields. With easy access to Stanbridge Manor and the Audley Club, this apartment is in the perfect spot.

Property specifications:

- Luxury SieMatic kitchen with integrated appliances and pantry
- Spacious kitchen/living room with private balcony
- Master bedroom with fitted double wardrobes and en suite with walk-in shower



Audley Stanbridge Earls
Awbridge, Nr Romsey, Hampshire, SO51 0GY
01794 278 303
www.audleyvillages.co.uk

