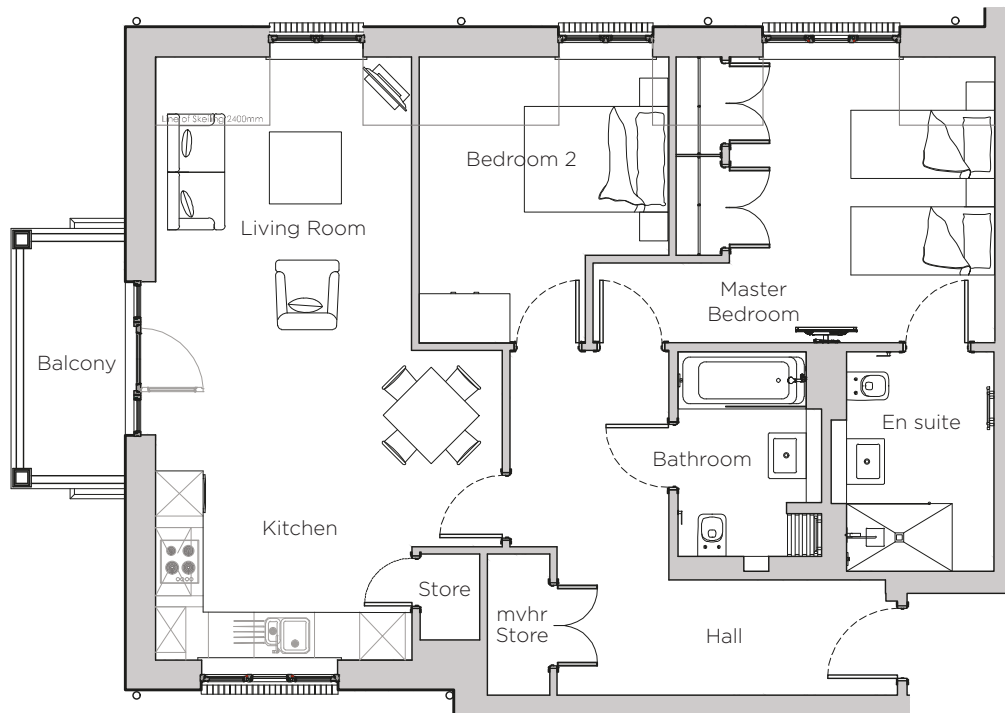


Audley Stanbridge Earls

7 Nightingale Hall
Apartment, first floor

Plot L07



Internal Measurements	Metric (m)	Imperial (ft)
Living Room & Kitchen	7.97 x 4.59	26' 2" x 15' 1"
Master Bedroom	5.31 x 3.78	17' 5" x 12' 5"
Bedroom 2	3.78 x 3.30	12' 5" x 10' 10"
Balcony	3.10 x 1.34	10' 2" x 4' 5"

Audley Stanbridge Earls
Awbridge, Nr Romsey, Hampshire, SO51 0GY
01794 278 303
www.audleyvillages.co.uk

Drawings are preliminary and may be subject to change pending detailed design. Furniture for illustration purposes only. Built-in wardrobes in bedrooms have not been included in the overall dimensions. Maximum measurements shown. These pages are intended for marketing purposes only. Designs vary according to plot and all details should be checked at the Sales Office. December 2018



Audley Stanbridge Earls

7 Nightingale Hall
Apartment, first floor

Plot L07



2 bedroom, first floor apartment

This first floor apartment has a private balcony overlooking the playing field. The luxury SieMatic kitchen is open plan with the living room giving a light, open space.

Property specifications:

- Master bedroom with en suite
- Second double bedroom
- Villeroy & Boch guest bathroom
- Open plan kitchen/living room with private balcony
- Hallway storage
- Easy access to Audley Club

Audley Stanbridge Earls
Awbridge, Nr Romsey, Hampshire, SO51 0ZS
01794 278303
www.audleyvillages.co.uk

