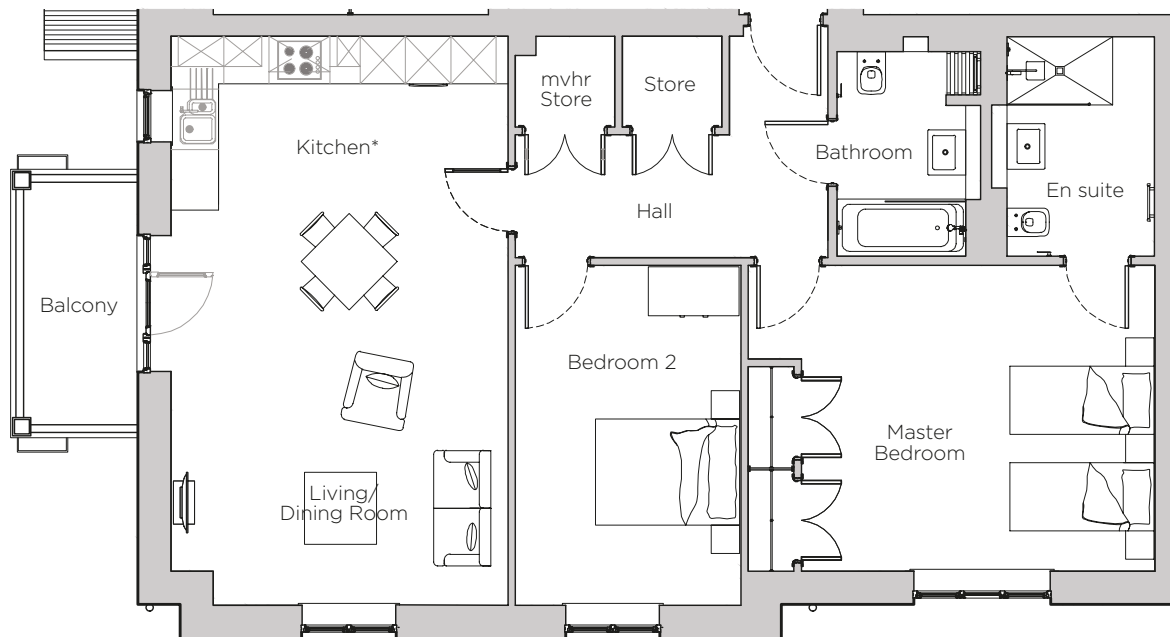


# Audley Stanbridge Earls

Apartment 07  
Gallop Place, First Floor

Plot J07



Kitchen layout to be confirmed

Internal Measurements	Metric (m)	Imperial (ft)
Living/Dining Room	7.52 x 4.46	24'8" x 14'8"
Kitchen	5.37 x 4.04	17'7" x 13'3"
Master Bedroom	4.49 x 2.98	14'9" x 9'9"
Bedroom 2	3.21 x 1.50	10'6" x 4'11"

Audley Stanbridge Earls  
Awbridge, Nr Romsey, Hampshire, SO51 0GY  
01794 278 303  
[www.audleyvillages.co.uk](http://www.audleyvillages.co.uk)

Drawings are preliminary and may be subject to change pending detailed design. Furniture for illustration purposes only. Built-in wardrobes in bedrooms have not been included in the overall dimensions. Maximum measurements shown. These pages are intended for marketing purposes only. Designs vary according to plot and all details should be checked at the Sales Office. January 2019



# Audley Stanbridge Earls

Apartment 07  
Gallop Place, First Floor

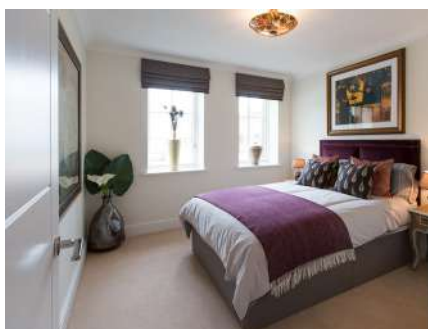


## 2 bedroom, first floor apartment

Accessible via the lift or stairs, this two bedroom apartment has plenty of storage. There is a large open plan kitchen and living room with a private balcony. The master bedroom has an en suite and the second bedroom is a good size double.

Property specifications:

- Large master bedroom with built in wardrobes and en suite
- Second double bedroom
- Guest bathroom
- Open plan kitchen and living room
- Luxury SieMatic kitchen with integrated appliances
- Hallway storage



Audley Stanbridge Earls  
Awbridge, Nr Romsey, Hampshire, SO51 0GY  
01794 278 303  
[www.audleyvillages.co.uk](http://www.audleyvillages.co.uk)

