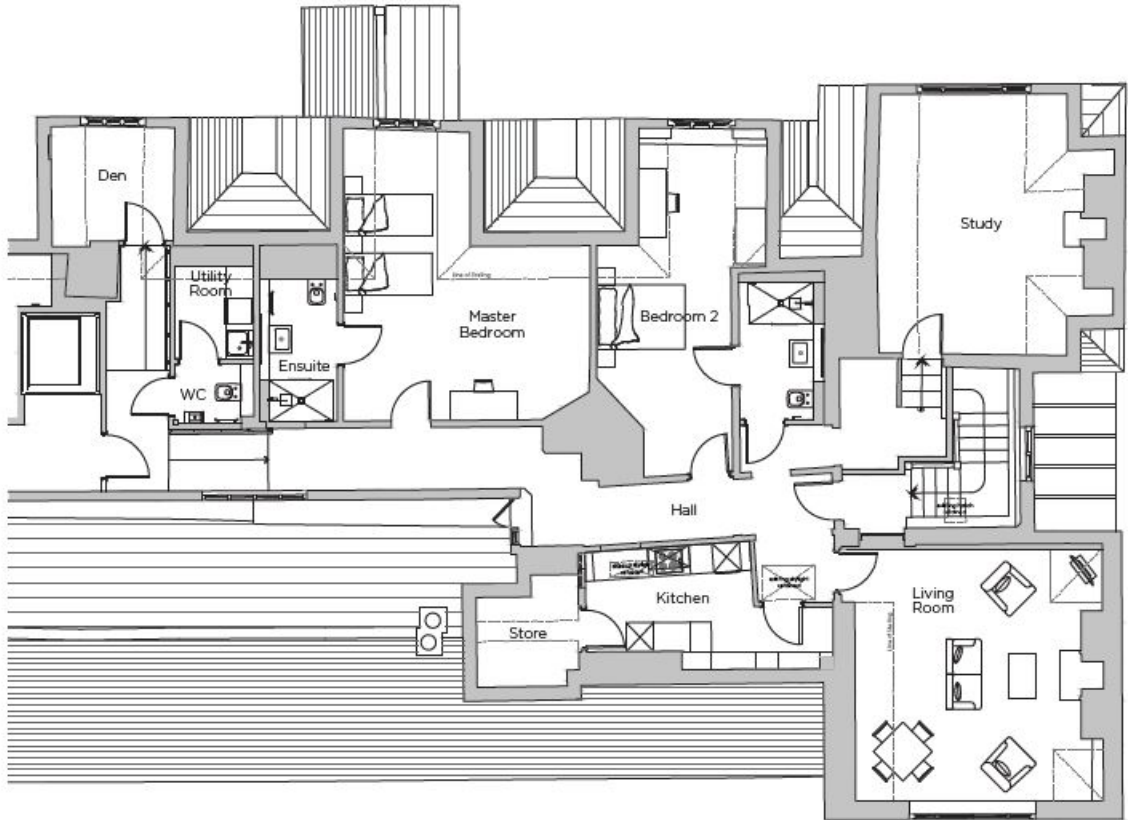


# Audley Stanbridge Earls

6 Stanbridge Manor  
Three bedroom pre-owned second floor  
apartment



## Internal Measurements

## Metric (m)

## Imperial (ft)

Living/Dining Room	5.39 x 5.47	17' 8" x 17' 11"
Kitchen	5.35 x 2.16	17' 7" x 7' 1"
Master Bedroom	5.36 x 6.36	17' 7" x 20' 10"
Bedroom 2	2.92 x 7.58	9' 7" x 24' 10"
Study	4.48 x 5.68	14' 8" x 18' 8"
Den	2.70 x 2.60	8' 10" x 8' 6"



Audley Stanbridge Earls  
Awbridge, Nr Romsey, Hampshire, SO51 0ZS  
01794 278303  
[www.audleyvillages.co.uk](http://www.audleyvillages.co.uk)

Built in wardrobes in bedrooms have not been included in the overall dimensions.  
Maximum measurements shown. These pages are intended for marketing purposes only.  
Designs vary according to plot and all details should be checked at the Sales office.  
October 2020

# Audley Stanbridge Earls

6 Stanbridge Manor  
Three bedroom pre-owned second floor  
apartment



## Three bedroom second floor apartment

This stunning apartment is conveniently located in Stanbridge Manor and offers two spacious bedrooms with ensuite shower rooms, a large study and an additional den. The property has plenty of storage space throughout, a luxury fitted kitchen and a separate utility room space.

### Property specifications

- Large study room
- Additional den space
- SieMatic kitchen with integrated appliances
- Master bedroom with an en suite shower room and Villeroy & Boch sanitaryware
- Guest bedroom and bathroom
- Storage facilities throughout



### Guide Price **£949,950** (other fees apply)

Monthly management fee £864.41  
Annual ground rent £500

Viewing by appointment with the sales office.

Audley Stanbridge Earls  
Awbridge, Nr Romsey, Hampshire, SO51 0ZS  
01794 278303  
[www.audleyvillages.co.uk](http://www.audleyvillages.co.uk)

