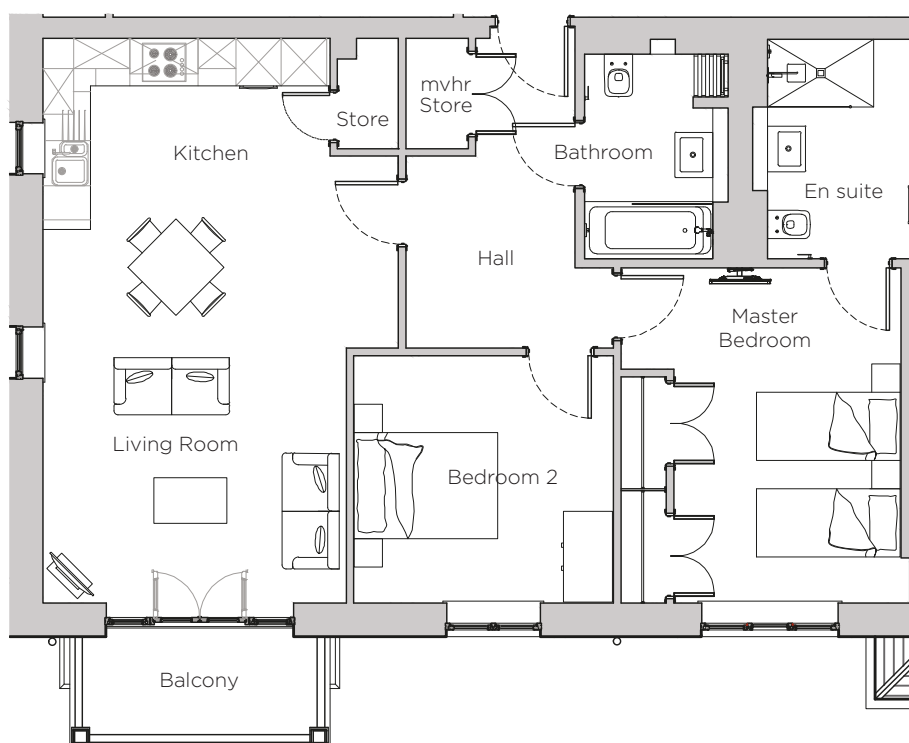


Audley Stanbridge Earls

6 Nightingale Hall
Apartment, first floor

Plot L06



Internal Measurements	Metric (m)	Imperial (ft)
Living Room & Kitchen	7.46 x 4.70	24' 6" x 15' 5"
Master Bedroom	4.43 x 3.71	14' 6" x 12' 2"
Bedroom 2	3.43 x 3.27	11' 3" x 10' 9"
Balcony	3.10 x 1.30	10' 2" x 4' 3"

Audley Stanbridge Earls
Awbridge, Nr Romsey, Hampshire, SO51 0GY
01794 278 303
www.audleyvillages.co.uk

Drawings are preliminary and may be subject to change pending detailed design. Furniture for illustration purposes only. Built-in wardrobes in bedrooms have not been included in the overall dimensions. Maximum measurements shown. These pages are intended for marketing purposes only. Designs vary according to plot and all details should be checked at the Sales Office. December 2018



Audley Stanbridge Earls

6 Nightingale Hall
Apartment, first floor

Plot L06



2 bedroom, first floor apartment

With a private south-facing balcony, this two bedroom apartment is the perfect property. The open plan kitchen and living room is spacious and the second bedroom is a good size.

Property specifications:

- Master bedroom with en suite
- Luxury SieMatic kitchen open plan with living room
- Private south-facing balcony
- Second double bedroom
- Villeroy & Boch guest bathroom
- Hallway storage

Audley Stanbridge Earls
Awbridge, Nr Romsey, Hampshire, SO51 0ZS
01794 278303
www.audleyvillages.co.uk

