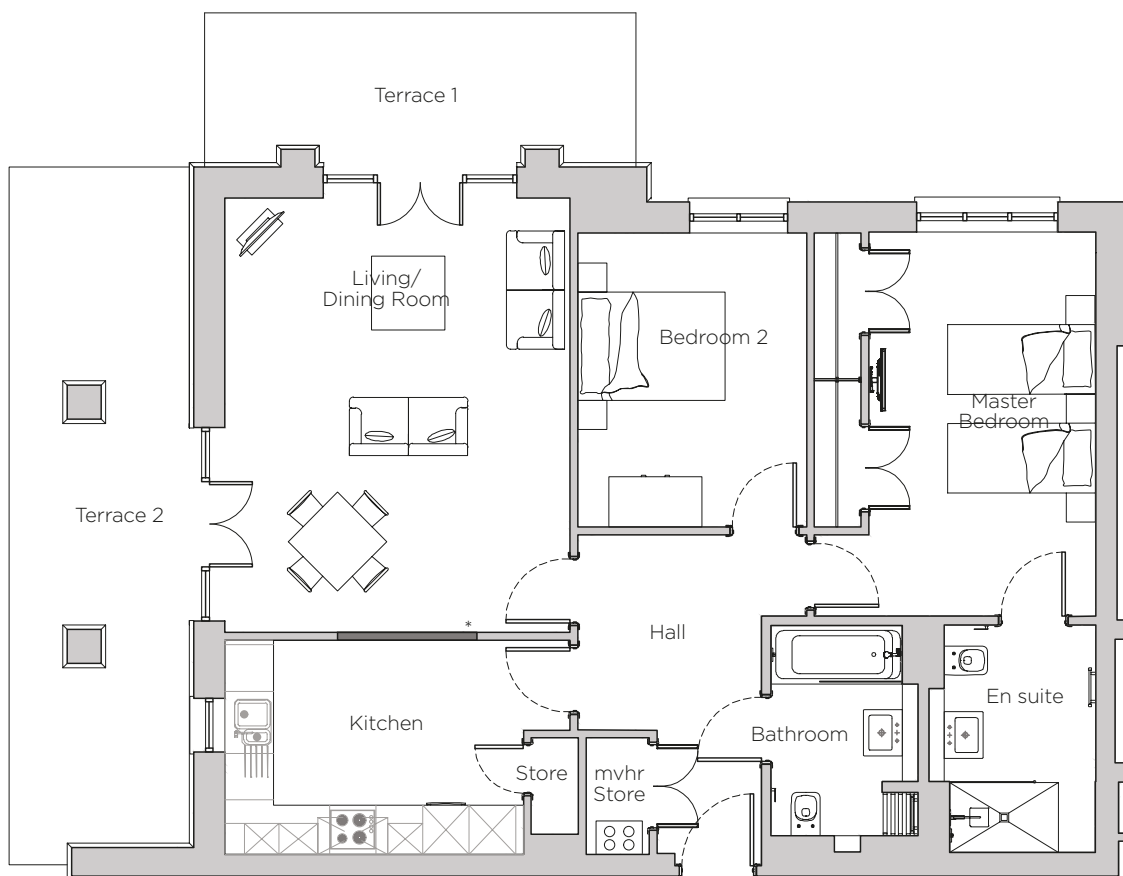


# Audley Stanbridge Earls

Apartment 04 (Plot M04)  
Montgomery Hall, Ground Floor



\* Open plan option available

| Internal Measurements | Metric (m)  | Imperial (ft)    |
|-----------------------|-------------|------------------|
| Living/Dining Room    | 4.45 x 5.60 | 14' 7" x 18' 4"  |
| Kitchen               | 4.45 x 2.76 | 14' 7" x 9' 1"   |
| Master Bedroom        | 3.62 x 4.95 | 11' 11" x 16' 3" |
| Bedroom 2             | 2.95 x 3.79 | 9' 8" x 12' 5"   |
| Terrace 1             | 5.50 x 1.99 | 18' 1" x 6' 6"   |
| Terrace 2             | 2.32 x 9.00 | 7' 7" x 29' 6"   |



Audley Stanbridge Earls  
Awbridge, Nr Romsey, Hampshire, SO51 0GY  
01794 278 303  
[www.audleyvillages.co.uk](http://www.audleyvillages.co.uk)

Drawings are preliminary and may be subject to change pending detailed design. Furniture for illustration purposes only. Built-in wardrobes in bedrooms have not been included in the overall dimensions. Maximum measurements shown. These pages are intended for marketing purposes only. Designs vary according to plot and all details should be checked at the Sales Office. September 2018



# Audley Stanbridge Earls

Apartment 04 (Plot M04)  
Montgomery Hall, Ground Floor



## Two bedroom, ground floor apartment

This perfect two bedroom ground floor property has two terraces to ensure you get both the morning and afternoon sun. The kitchen is separate and a good size.

Property specifications:

- Master bedroom with built in double wardrobes and en suite walk in shower
- Villeroy & Boch guest bathroom
- Second double bedroom
- Two terraces, both accessible from the living/dining room
- Luxury SieMatic kitchen

Audley Stanbridge Earls  
Awbridge, Nr Romsey, Hampshire, SO51 0GY  
01794 278 303  
[www.audleyvillages.co.uk](http://www.audleyvillages.co.uk)

