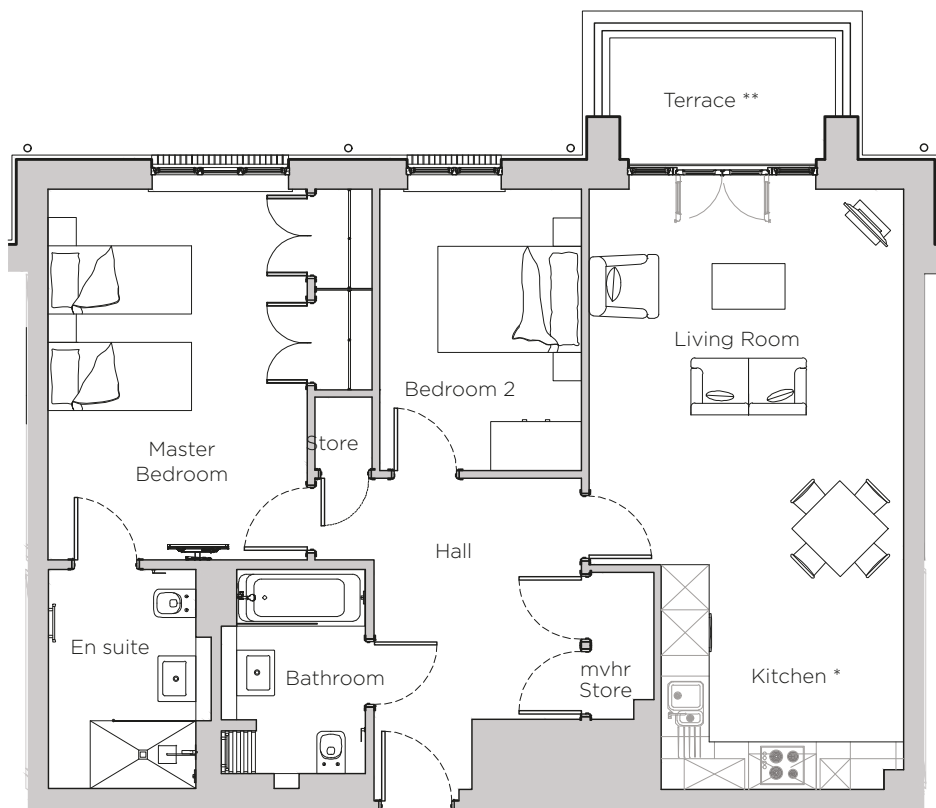


# Audley Stanbridge Earls

Apartment 03  
Nightingale Hall, Ground Floor

Plot L03



\* Kitchen layout to be confirmed

\*\* Terrace includes handrail

| Internal Measurements | Metric (m)  | Imperial (ft)   |
|-----------------------|-------------|-----------------|
| Living Room & Kitchen | 7.93 x 4.16 | 25' 0" x 13' 8" |
| Master Bedroom        | 4.90 x 3.43 | 16' 1" x 11' 3" |
| Bedroom 2             | 3.72 x 2.67 | 12' 2" x 8' 10" |
| Terrace               | 2.98 x 1.67 | 9' 9" x 5' 6"   |

Audley Stanbridge Earls  
Awbridge, Nr Romsey, Hampshire, SO51 0GY  
01794 278 303  
[www.audleyvillages.co.uk](http://www.audleyvillages.co.uk)

Drawings are preliminary and may be subject to change pending detailed design. Furniture for illustration purposes only. Built-in wardrobes in bedrooms have not been included in the overall dimensions. Maximum measurements shown. These pages are intended for marketing purposes only. Designs vary according to plot and all details should be checked at the Sales Office. December 2018



# Audley Stanbridge Earls

Apartment 03  
Nightingale Hall, Ground Floor

Plot L03



## 2 bedroom, ground floor apartment

Located on the ground floor, this two bedroom apartment has a large master bedroom, with fitted double wardrobes and an en suite with a walk-in shower. There is an open plan kitchen and living room with a terrace.

Property specifications:

- Open plan living and kitchen room
- Private terrace
- Hallway storage
- Spacious master bedroom with fitted wardrobes and en suite
- Guest bedroom and bathroom

Audley Stanbridge Earls  
Awbridge, Nr Romsey, Hampshire, SO51 0GY  
01794 278303  
[www.audleyvillages.co.uk](http://www.audleyvillages.co.uk)

