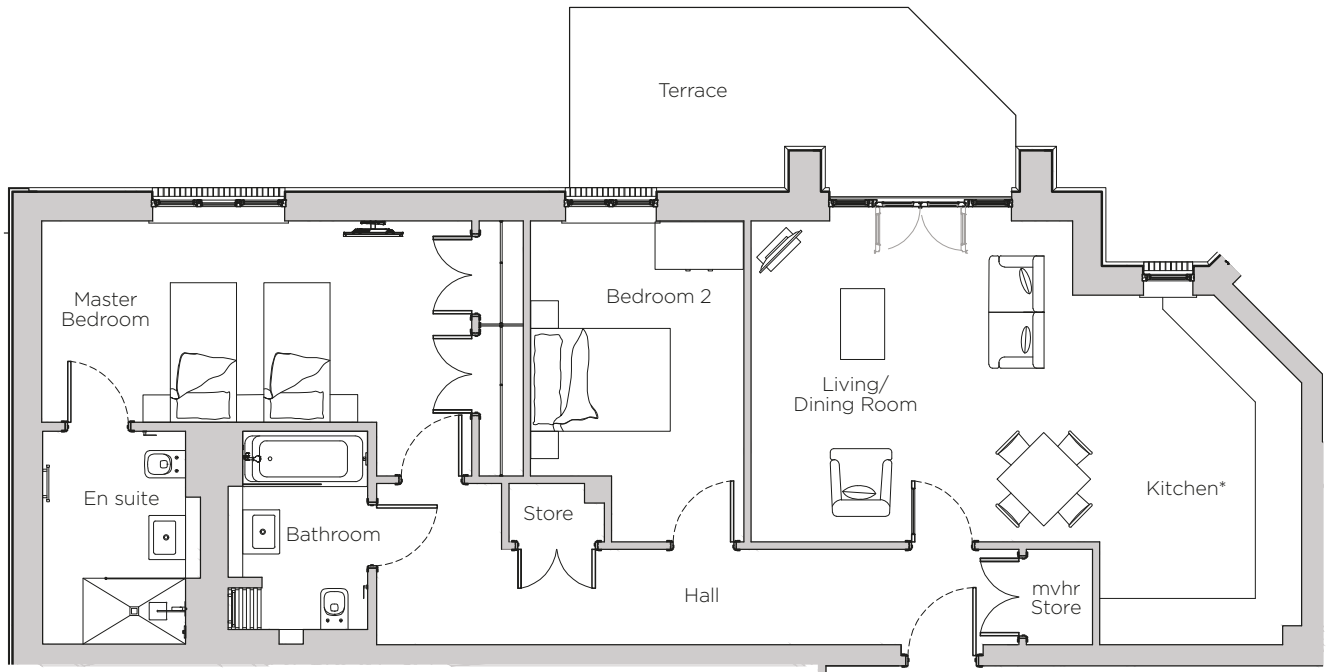


Audley Stanbridge Earls

Apartment 03
Kirkeby Court, Ground Floor

Plot H08



*Kitchen layout to be confirmed

Internal Measurements	Metric (m)	Imperial (ft)
Living Room & Kitchen	7.50 x 4.76	24'7" x 15'7"
Master Bedroom	5.86 x 3.47	19'3" x 11'5"
Bedroom 2	4.37 x 2.91	14'4" x 9'7"
Terrace	6.08 x 2.56	19'11" x 8'5"



Audley Stanbridge Earls
Awbridge, Nr Romsey, Hampshire, SO51 0GY
01794 278 303
www.audleyvillages.co.uk

Drawings are preliminary and may be subject to change pending detailed design. Furniture for illustration purposes only. Built-in wardrobes in bedrooms have not been included in the overall dimensions. Maximum measurements shown. These pages are intended for marketing purposes only. Designs vary according to plot and all details should be checked at the Sales Office. February 2019.



Audley Stanbridge Earls

Apartment 03
Kirkeby Court, Ground Floor

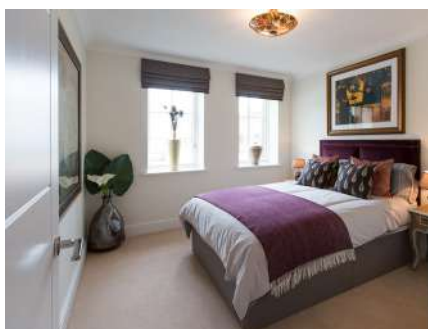


2 bedroom, ground floor apartment

The master bedroom in this ground floor apartment has fitted wardrobes and an en suite, while there is a good size second bedroom. The living room and kitchen are open plan with a private terrace.

Property specifications:

- Integrated appliances in luxury kitchen
- Open plan kitchen with living room
- Private terrace accessed from living room
- Master bedroom with en suite
- Guest bedroom and bathroom
- Hallway storage



Audley Stanbridge Earls
Awbridge, Nr Romsey, Hampshire, SO51 0GY
01794 278 303
www.audleyvillages.co.uk

