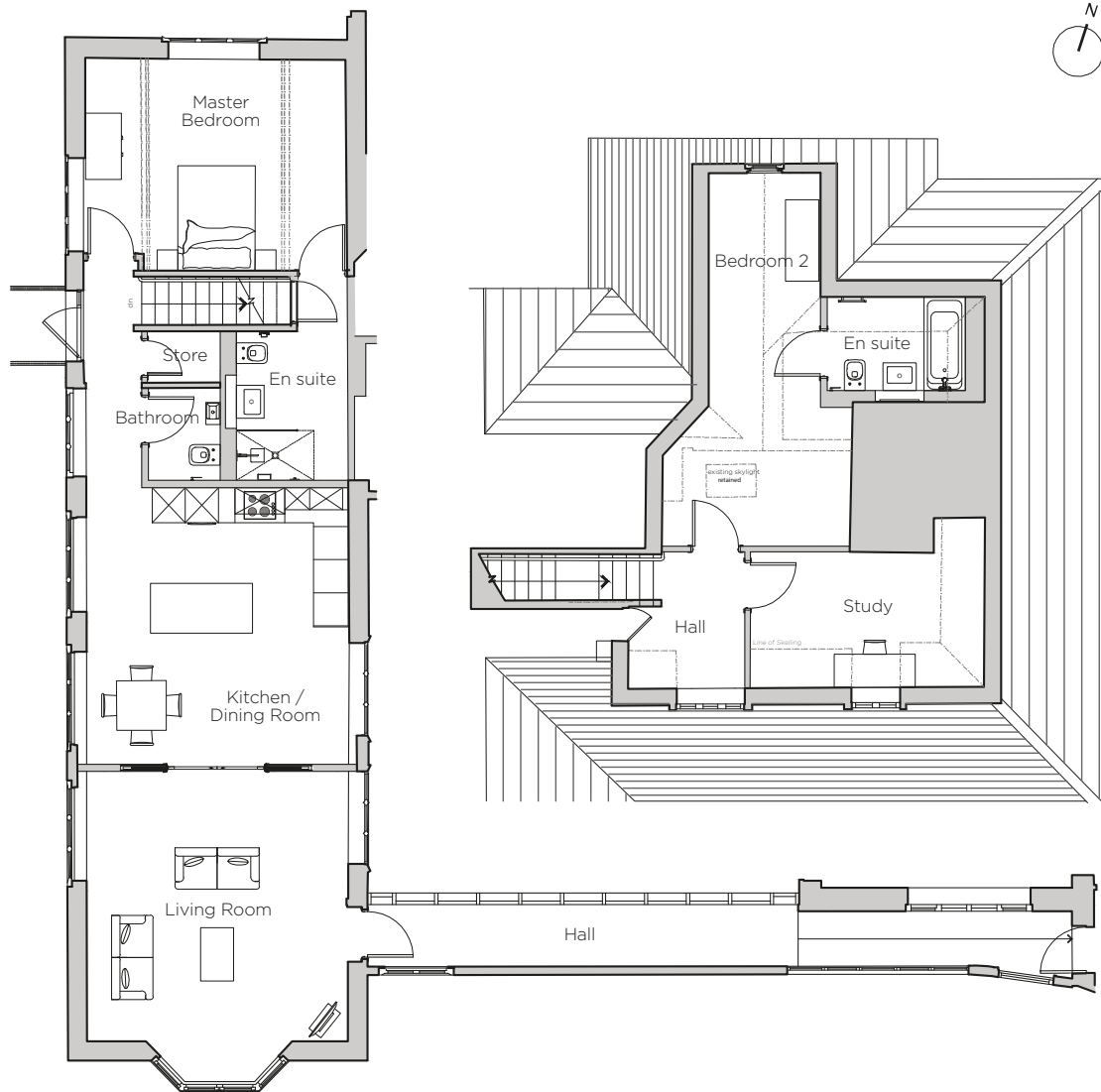


# Audley Stanbridge Earls

Apartment 2 (Plot A04)  
Stanbridge Manor, First & Second Floor



| Internal Measurements | Metric (m)  | Imperial (ft)   |
|-----------------------|-------------|-----------------|
| Living Room           | 4.89 x 4.73 | 16' 1" x 15' 6" |
| Kitchen/Dining Room   | 5.01 x 4.74 | 16' 5" x 15' 7" |
| Master Bedroom        | 4.72 x 3.82 | 15' 6" x 12' 6" |
| Bedroom 2             | 3.41 x 6.76 | 11' 2" x 22' 2" |
| Study                 | 4.23 x 2.47 | 13' 11" x 8' 1" |



Audley Stanbridge Earls  
Awbridge, Nr Romsey, Hampshire, SO51 0GY  
01794 278 303  
[www.audleyvillages.co.uk](http://www.audleyvillages.co.uk)

Built-in wardrobes in bedrooms have not been included in the overall dimensions. Maximum measurements shown. These pages are intended for marketing purposes only. Designs vary according to plot and all details should be checked at the Sales Office. October 2018.



# Audley Stanbridge Earls

Apartment 2 (Plot A04)  
Stanbridge Manor, First & Second Floor



## Three bedroom, first and second floor duplex

This three bedroom duplex is located in the impeccably restored main house. Surrounded by beautiful greenery and landscaped gardens it enjoys excellent positioning in the village. This luxury home has an additional study and separate living/dining room.

Property specifications:

- Three bedrooms
- Master bedroom has a built-in wardrobe and en suite with walk-in shower
- Luxury Villeroy & Boch second bathroom as en suite from third bedroom
- SieMatic kitchen with handleless units
- Study on second floor with south-facing views
- South-facing living room with dining space
- Hallway w.c. and store cupboard
- First and second floor

Audley Stanbridge Earls  
Awbridge, Nr Romsey, Hampshire, SO51 0GY  
01794 278 303  
[www.audleyvillages.co.uk](http://www.audleyvillages.co.uk)

