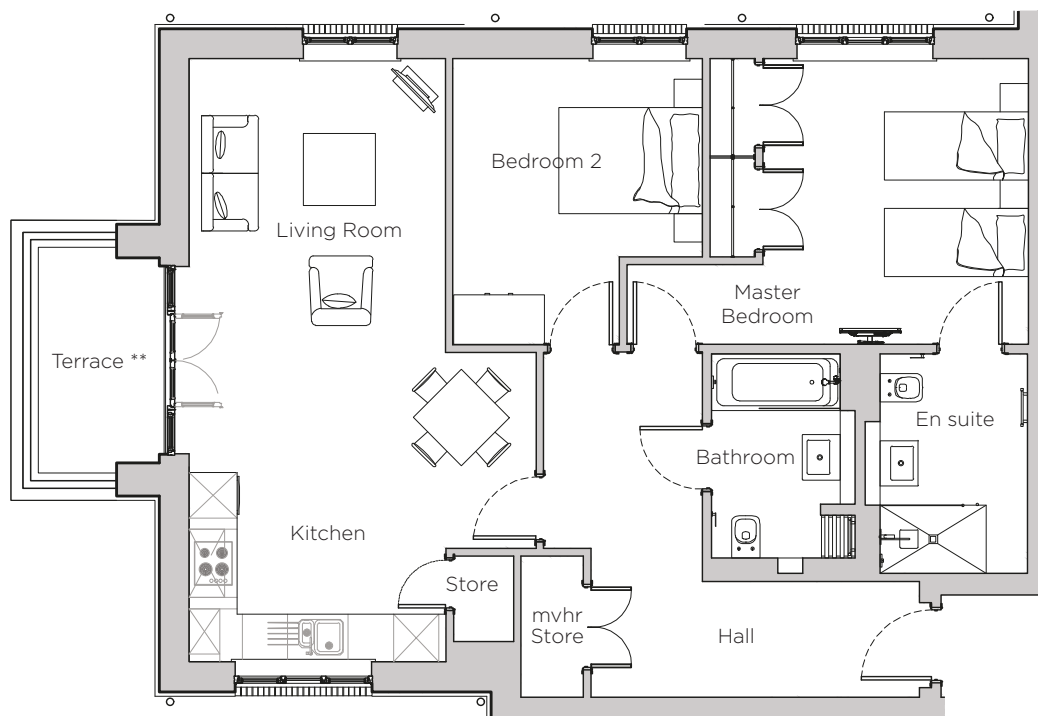


Audley Stanbridge Earls

2 Nightingale Hall
Apartment, ground floor

Plot L02



** Terrace includes handrail

Internal Measurements	Metric (m)	Imperial (ft)
Living Room & Kitchen	7.97 x 4.59	26' 2" x 15' 1"
Master Bedroom	5.31 x 3.78	17' 5" x 12' 5"
Bedroom 2	3.78 x 3.30	12' 5" x 10' 10"
Terrace	2.98 x 1.67	9' 9" x 5' 6"

Audley Stanbridge Earls
Awbridge, Nr Romsey, Hampshire, SO51 0GY
01794 278 303
www.audleyvillages.co.uk

Drawings are preliminary and may be subject to change pending detailed design. Furniture for illustration purposes only. Built-in wardrobes in bedrooms have not been included in the overall dimensions. Maximum measurements shown. These pages are intended for marketing purposes only. Designs vary according to plot and all details should be checked at the Sales Office. December 2018



Audley Stanbridge Earls

2 Nightingale Hall
Apartment, ground floor

Plot L02



2 bedroom, ground floor apartment

The spacious apartment faces west to the playing field, with the terrace accessed from the open plan kitchen/living room. This two bedroom ground floor apartment offers privacy but with easy access to the Audley Club.

Property specifications:

- West-facing terrace from open plan kitchen/living room
- Luxury SieMatic fitted kitchen with store cupboard
- Master bedroom with fitted double wardrobe and en suite walk in shower
- Villeroy & Boch guest bathroom
- Second double bedroom
- Hallway storage



Audley Stanbridge Earls
Awbridge, Nr Romsey, Hampshire, SO51 0ZS
01794 278303
www.audleyvillages.co.uk

