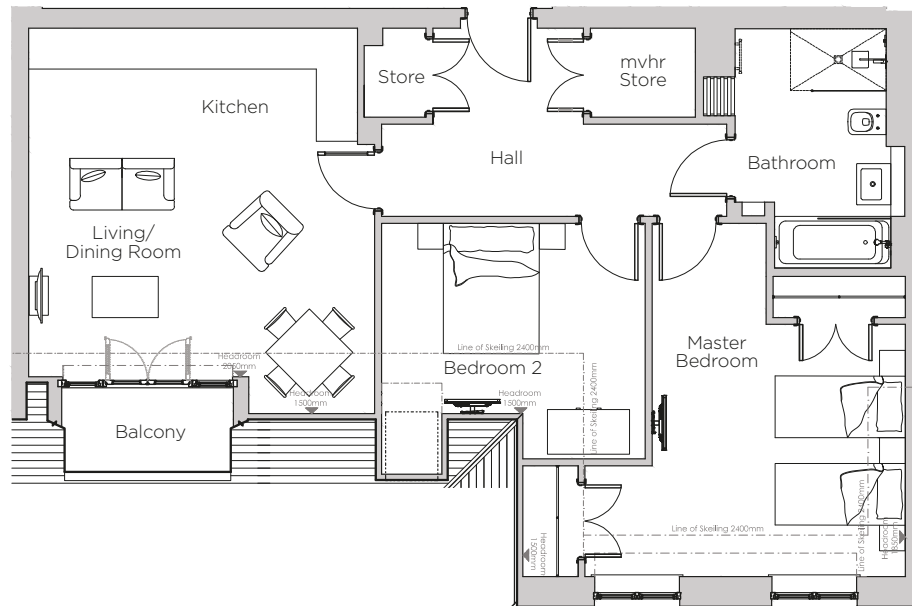


# Audley Stanbridge Earls

Apartment 23  
Kirkeby Court, Second Floor

Plot H22



\*Kitchen layout to be confirmed

Internal Measurements	Metric (m)	Imperial (ft)
Living Room & Kitchen	5.62 x 5.05	18'5" x 16'7"
Master Bedroom	5.15 x 4.68	16'11" x 15'4"
Bedroom 2	3.85 x 3.44	12'8" x 11'3"
Balcony	2.51 x 1.22	8'3" x 4'0"



Audley Stanbridge Earls  
Awbridge, Nr Romsey, Hampshire, SO51 0GY  
01794 278 303  
[www.audleyvillages.co.uk](http://www.audleyvillages.co.uk)

Drawings are preliminary and may be subject to change pending detailed design. Furniture for illustration purposes only. Built-in wardrobes in bedrooms have not been included in the overall dimensions. Maximum measurements shown. These pages are intended for marketing purposes only. Designs vary according to plot and all details should be checked at the Sales Office. February 2019.



# Audley Stanbridge Earls

Apartment 23  
Kirkeby Court, Second Floor



## 2 bedroom, second floor apartment

Located close to the Audley Club, this second floor apartment is perfectly situated within the village. The living area and kitchen are open plan and there is a private, south facing balcony.

Property specifications:

- Master bedroom with built in wardrobes
- Villeroy & Boch bathroom with walk-in shower
- Second double bedroom
- Open plan living space
- Luxury SieMatic kitchen
- Private south facing balcony
- Hallway storage



Audley Stanbridge Earls  
Awbridge, Nr Romsey, Hampshire, SO51 0GY  
01794 278 303  
[www.audleyvillages.co.uk](http://www.audleyvillages.co.uk)

