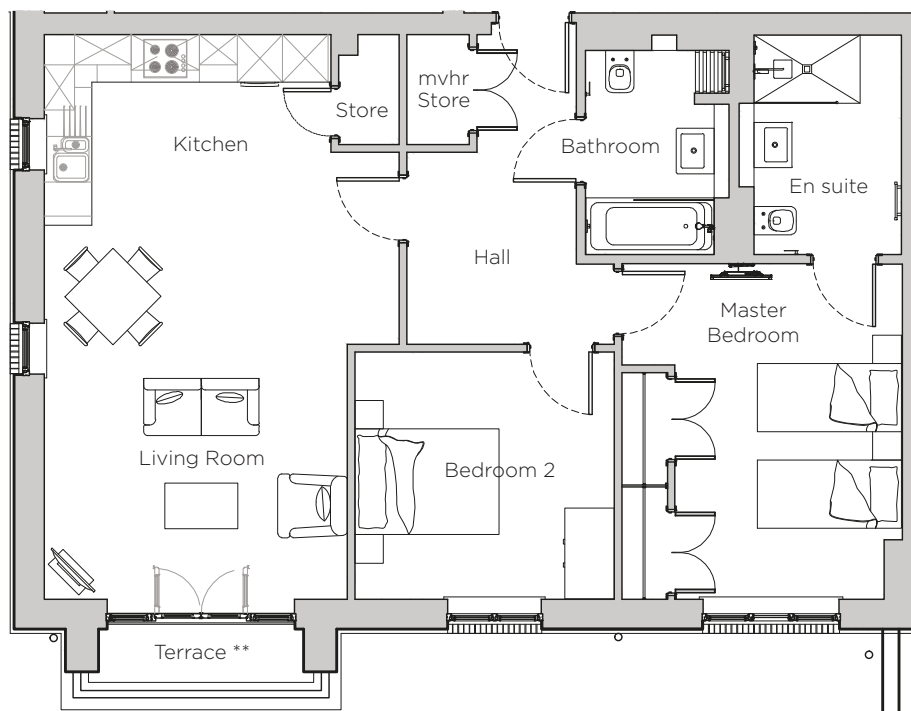


# Audley Stanbridge Earls

1 Nightingale Hall  
Apartment, ground floor

Plot L01



\*\* Terrace includes handrail

Internal Measurements	Metric (m)	Imperial (ft)
Living Room & Kitchen	7.46 x 4.70	24' 6" x 15' 5"
Master Bedroom	4.43 x 3.71	14' 6" x 12' 2"
Bedroom 2	3.43 x 3.27	11' 3" x 10' 9"
Terrace	2.71 x 0.77	8' 11" x 2' 6"

Audley Stanbridge Earls  
Awbridge, Nr Romsey, Hampshire, SO51 0GY  
01794 278 303  
[www.audleyvillages.co.uk](http://www.audleyvillages.co.uk)

Drawings are preliminary and may be subject to change pending detailed design. Furniture for illustration purposes only. Built-in wardrobes in bedrooms have not been included in the overall dimensions. Maximum measurements shown. These pages are intended for marketing purposes only. Designs vary according to plot and all details should be checked at the Sales Office. December 2018



# Audley Stanbridge Earls

1 Nightingale Hall  
Apartment, ground floor

Plot L01



## 2 bedroom, ground floor apartment

This delightful ground floor apartment has south-facing terrace which is accessible from the open plan living room/kitchen. The luxury kitchen offers fully integrated appliances and a pantry store. The master bedroom has an en suite and built in double wardrobes.

Property specifications:

- Master bedroom with fitted double wardrobes and an en suite with a walk in shower
- Second double bedroom
- Guest Villeroy & Boch bathroom
- Open plan SieMatic kitchen
- Living room with south-facing terrace
- Hallway storage

Audley Stanbridge Earls  
Awbridge, Nr Romsey, Hampshire, SO51 0ZS  
01794 278303  
[www.audleyvillages.co.uk](http://www.audleyvillages.co.uk)

