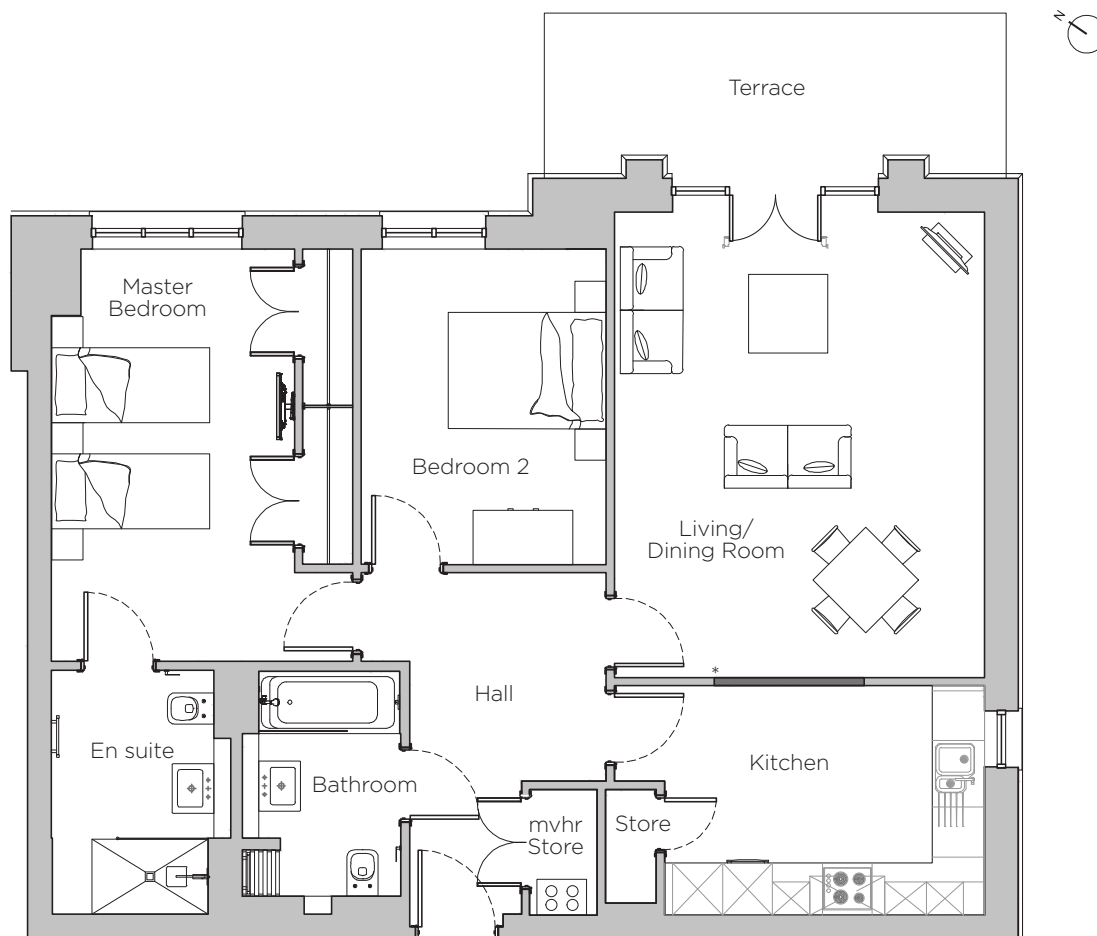


Audley Stanbridge Earls

1 Montgomery Hall,
Apartment, ground floor

Plot M01



* Open plan option available

Internal Measurements	Metric (m)	Imperial (ft)
Living/Dining Room	4.45 x 5.60	14'7" x 18'4"
Kitchen	4.45 x 2.76	14'7" x 9'1"
Master Bedroom	3.62 x 4.96	11'11" x 16'3"
Bedroom 2	2.95 x 3.79	9'8" x 12'5"
Terrace	5.50 x 1.99	18'1" x 6'6"



Audley Stanbridge Earls
Awbridge, Nr Romsey, Hampshire, SO51 0ZS
01794 278303
www.audleyvillages.co.uk

Drawings are preliminary and may be subject to change pending detailed design. Furniture for illustration purposes only. Built-in wardrobes in bedrooms have not been included in the overall dimensions. Maximum measurements shown. These pages are intended for marketing purposes only. Designs vary according to plot and all details should be checked at the Sales Office. September 2018



Audley Stanbridge Earls

1 Montgomery Hall,
Apartment, ground floor

Plot M01



2 bedroom, ground floor apartment

This ground floor apartment has a spacious living/dining room with a private terrace. The separate kitchen has the option to be open plan and offers integrated appliances. The master bedroom is spacious with an en suite.

Property specifications:

- Luxury SieMatic kitchen
- Large living/dining room with private terrace
- Master bedroom with built in wardrobes and en suite
- Double guest bedroom
- Villeroy & Boch bathroom



Audley Stanbridge Earls
Awbridge, Nr Romsey, Hampshire, SO51 0ZS
01794 278303
www.audleyvillages.co.uk

