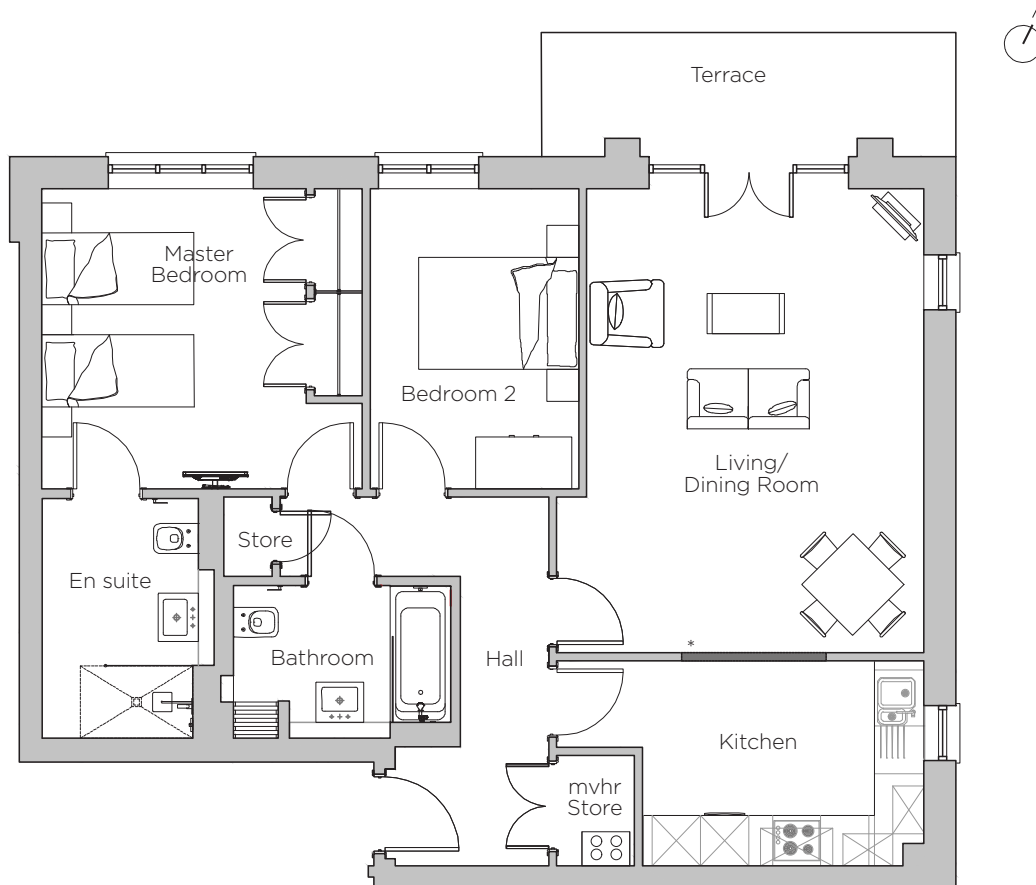


Audley Stanbridge Earls

1 Hansard Place
Apartment, ground floor

Plot N04



* Open plan option available

Internal Measurements	Metric (m)	Imperial (ft)
Living/Dining Room	5.80 x 4.58	19'0" x 15'0"
Kitchen	4.58 x 2.56	15'0" x 8'5"
Master Bedroom	4.00 x 3.75	13'1" x 12'4"
Bedroom 2	3.75 x 2.60	12'4" x 8'6"
Terrace	5.17 x 1.55	17'0" x 5'1"



Audley Stanbridge Earls
Awbridge, Nr Romsey, Hampshire, SO51 0ZS
01794 278303
www.audleyvillages.co.uk

Drawings are preliminary and may be subject to change pending detailed design. Furniture for illustration purposes only. Built-in wardrobes in bedrooms have not been included in the overall dimensions. Maximum measurements shown. These pages are intended for marketing purposes only. Designs vary according to plot and all details should be checked at the Sales Office. September 2018



Audley Stanbridge Earls

1 Hansard Place
Apartment, ground floor

Plot NO4



2 bedroom, ground floor apartment

This two bedroom apartment is located on the ground floor. The master bedroom has fitted double wardrobes and an en suite, while the second bedroom is a good size double. There is a private terrace from the living/dining room and the kitchen has integrated appliances.

Property specifications:

- Luxury SieMatic kitchen with integrated appliances
- Large living/dining room with private terrace
- Master bedroom with fitted wardrobes and en suite
- Second bedroom for guests
- Villeroy & Boch bathroom
- Hallway storage



Audley Stanbridge Earls
Awbridge, Nr Romsey, Hampshire, SO51 0ZS
01794 278303
www.audleyvillages.co.uk

