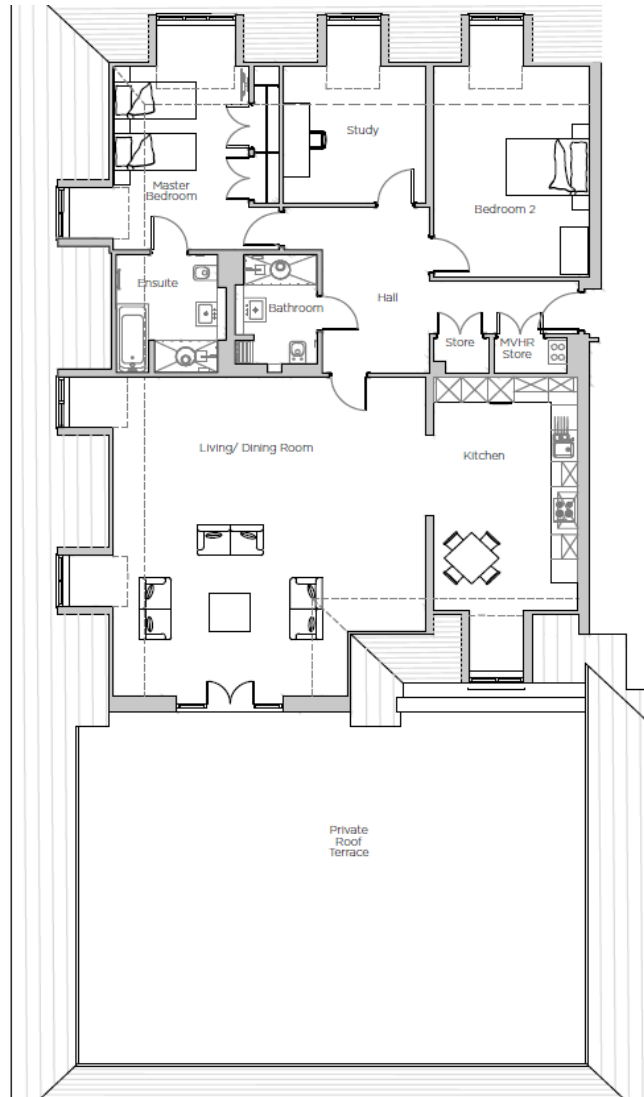


Audley Stanbridge Earls

1 Fifield House
Three bedroom pre-owned first floor apartment



Internal Measurements	Metric (m)	Imperial (ft)
Living/Dining Room	8.40 x 7.90	27'7" x 25'11"
Kitchen	7.30 x 3.35	23'11" x 11'0"
Master Bedroom	5.01 x 5.53	16'5" x 18'2"
Bedroom 2	3.61 x 6.22	11'10" x 20'5"
Study	3.29 x 4.39	10'10" x 14'5"
Private Roof Terrace	11.73 x 8.70	38'6" x 28'7"

Audley Stanbridge Earls
Awbridge, Nr Romsey, Hampshire, SO51 0ZS
01794 278303
www.audleyvillages.co.uk

Score	Energy rating	Current	Potential
92+	A		
81-91	B		
69-80	C	80 c	80 c
55-68	D		
39-54	E		
21-38	F		
1-20	G		

Built in wardrobes in bedrooms have not been included in the overall dimensions.
Maximum measurements shown. These pages are intended for marketing purposes only.
Designs vary according to plot and all details should be checked at the Sales office.
October 2020

Audley Stanbridge Earls

1 Fifield House

Three bedroom pre-owned first floor apartment



Three bedroom first floor apartment



This beautiful three bedroom apartment located on the first floor of Fifield House has a large outdoor private terrace that is perfect for entertaining. The living/dining room combines with the kitchen area to create a spacious open plan living space. There are two good sized bedrooms and a third bedroom or study. The master bedroom benefits from fitted wardrobes and an en suite bathroom.



Property specifications

- Large outdoor private terrace accessed via dual French doors from the living/dining room
- SieMatic kitchen with integrated appliances
- Master bedroom with an en suite shower room and Villeroy & Boch sanitaryware
- Guest bedroom and study
- Storage facilities in the hallway



Guide Price £1,050,000 (other fees apply)

Monthly management fee £455.88

Annual ground rent £500

Viewing by appointment with the sales office.

Audley Stanbridge Earls
Awbridge, Nr Romsey, Hampshire, SO51 0ZS
01794 278303
www.audleyvillages.co.uk

