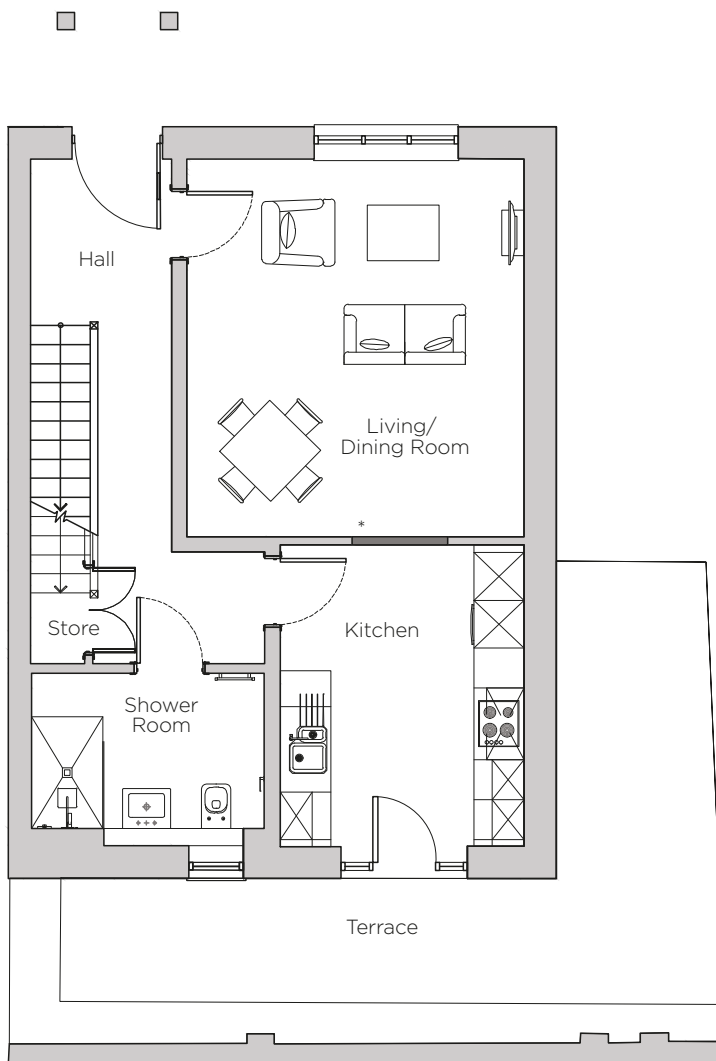


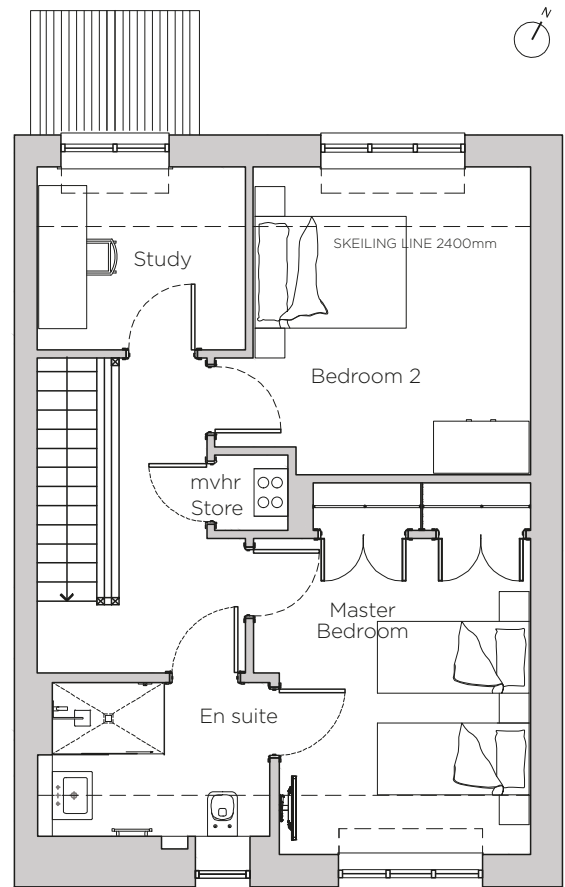
Audley Stanbridge Earls

Cottage 12, Walled Garden (Plot K08)



Ground Floor Plan

* Open plan option available



First Floor Plan

Internal Measurements	Metric (m)	Imperial (ft)
Living/Dining Room	4.24 x 4.75	13'11" x 15'7"
Kitchen	3.79 x 3.06	12'5" x 10'0"
Master Bedroom	3.97 x 3.48	13'0" x 11'5"
Bedroom 2	3.96 x 3.86	13'0" x 12'8"
Study	2.61 x 2.30	8'7" x 7'7"
Terrace	8.34 x 5.56	27'4" x 18'3"
Skeliling	1.80	5'11"



Audley Stanbridge Earls
 Awbridge, Nr Romsey, Hampshire, SO51 0GY
 01794 278 303
www.audleyvillages.co.uk

Drawings are preliminary and may be subject to change pending detailed design. Furniture for illustration purposes only. Built-in wardrobes in bedrooms have not been included in the overall dimensions. Maximum measurements shown. These pages are intended for marketing purposes only. Designs vary according to plot and all details should be checked at the Sales Office.
 September 2018



Audley Stanbridge Earls

Cottage 12, Walled Garden (Plot K08)



Two bedroom cottage

Located in the Walled Garden, this property is one of 14 cottages in the first phase. The property is fitted with a luxury SieMatic kitchen, and Villeroy & Boch shower rooms. There is hallway storage on both floors.

Property specifications:

- Semi-detached cottage
- Large private terrace accessed from kitchen
- Spacious living/dining room with option to make open plan with kitchen
- Shower room downstairs and Jack and Jill en suite upstairs
- Two good size double bedrooms
- Study located upstairs

Audley Stanbridge Earls
Awbridge, Nr Romsey, Hampshire, SO51 0GY
01794 278 303
www.audleyvillages.co.uk

