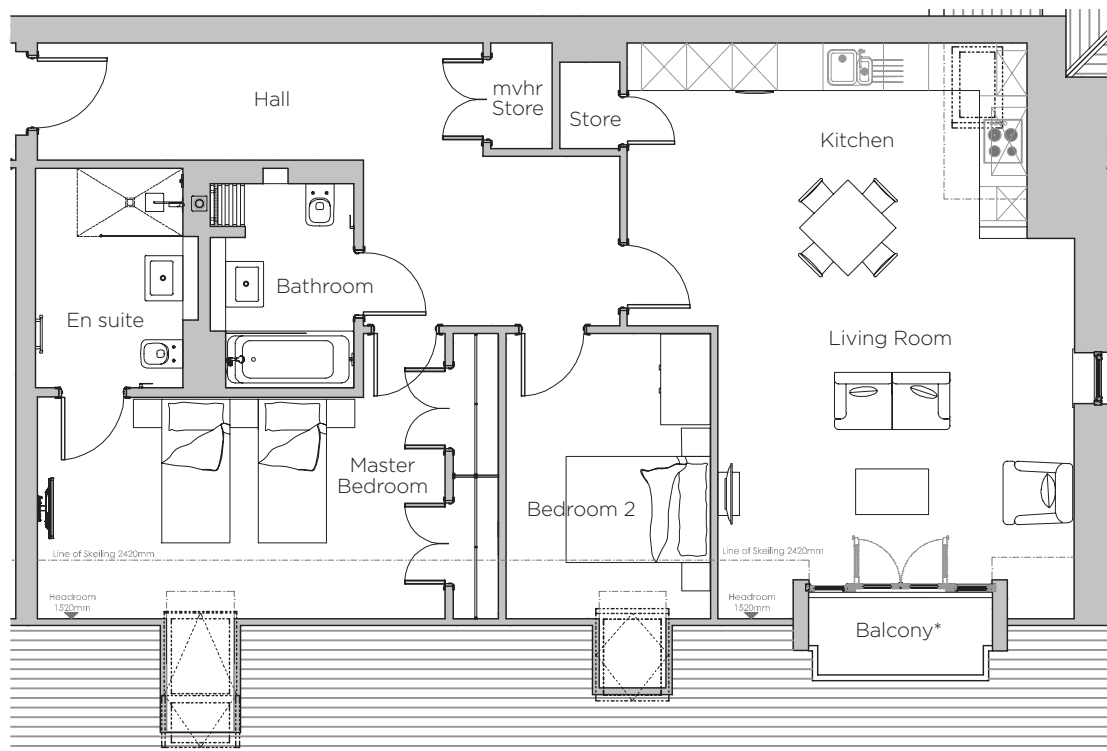


# Audley Stanbridge Earls

12 Nightingale Hall  
Apartment, second floor

Plot L12



\* 150mm step up to balcony.

Internal Measurements	Metric (m)	Imperial (ft)
Living Room & Kitchen	7.62 x 5.91	25' 0" x 19' 5"
Master Bedroom	5.39 x 2.93	17' 8" x 9' 7"
Bedroom 2	3.78 x 2.70	12' 5" x 8' 10"
Balcony	2.43 x 1.02	7' 12" x 3' 4"

Audley Stanbridge Earls  
Awbridge, Nr Romsey, Hampshire, SO51 0GY  
01794 278 303  
[www.audleyvillages.co.uk](http://www.audleyvillages.co.uk)



Drawings are preliminary and may be subject to change pending detailed design. Furniture for illustration purposes only. Built-in wardrobes in bedrooms have not been included in the overall dimensions. Maximum measurements shown. These pages are intended for marketing purposes only. Designs vary according to plot and all details should be checked at the Sales Office. December 2018



# Audley Stanbridge Earls

12 Nightingale Hall  
Apartment, second floor

Plot L12



## 2 bedroom, second floor apartment

Located on the second floor, this two bedroom apartment has a private south-facing balcony which is accessible from the living room. The living room is open plan with the luxury SieMatic kitchen which has integrated appliances.

Property specifications:

- Fully-fitted kitchen
- Open plan kitchen and living/dining room with south-facing balcony
- Master bedroom with fully fitted wardrobes and en suite
- Guest bedroom and bathroom
- Accessible via stairs or lift



Audley Stanbridge Earls  
Awbridge, Nr Romsey, Hampshire, SO51 0ZS  
01794 278303  
[www.audleyvillages.co.uk](http://www.audleyvillages.co.uk)

