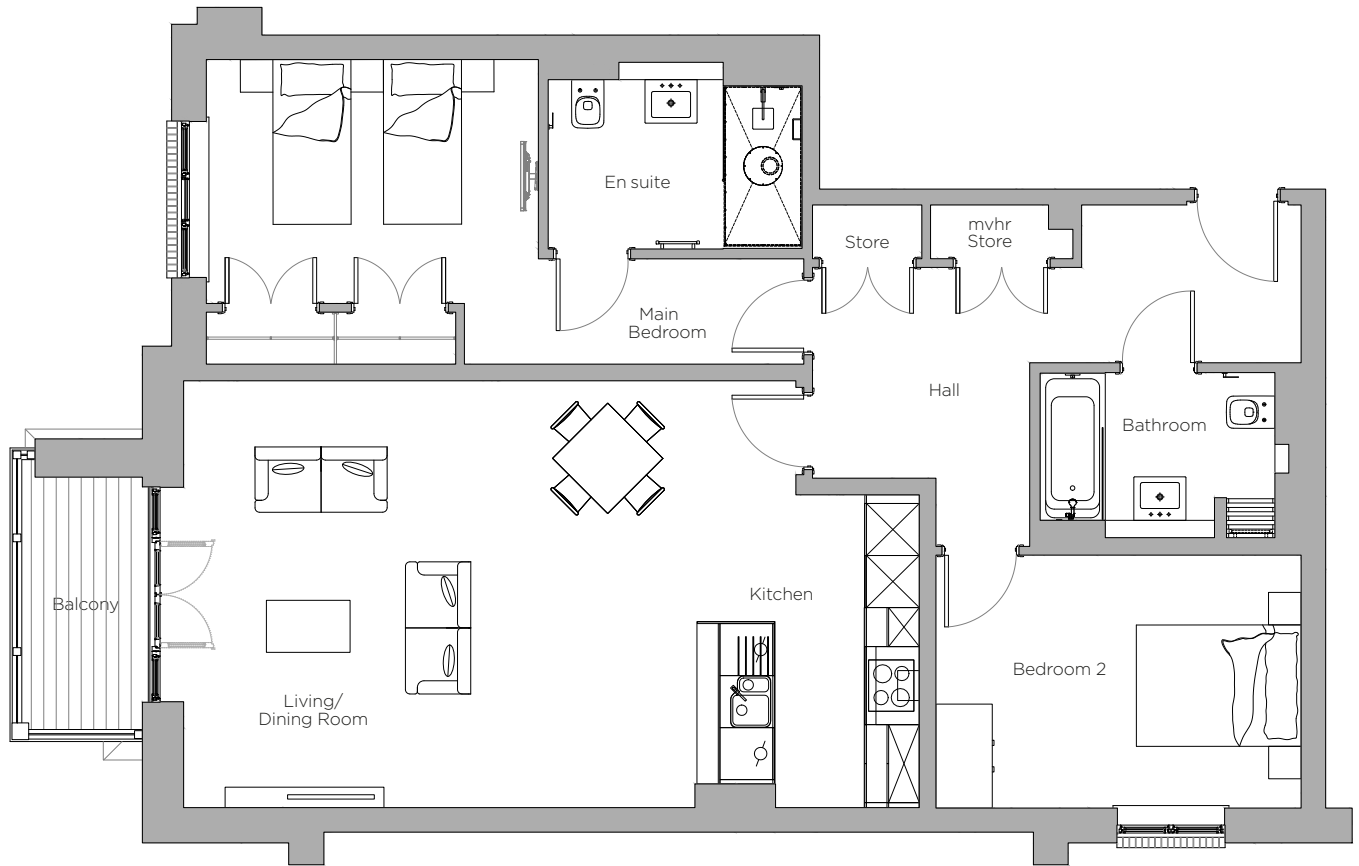


Audley Stanbridge Earls

Flat 08 Kenne Court
 First Floor, two bedroom apartment
 Plot F16



Internal Measurements

Kitchen/Living/Dining Room

Metric (m)

8.4 x 4.9

Imperial (ft)

27'5" x 16'0"

Main Bedroom

6.9 x 3.5

22'6" x 11'4"

Bedroom 2

4.2 x 2.9

13'7" x 9'5"



Audley Stanbridge Earls
 Awbridge, Nr Romsey,
 Hampshire SO51 0ZS
 01794 278 303
www.audleyvillages.co.uk

These floor plans are illustrative and for marketing purposes only. Furniture shown to illustrate possible room layouts and not included within the sale. Designs vary according to plot. All details should be checked at the Sales Office.



Audley Stanbridge Earls

2 bedroom, first floor apartment



Property highlights

- First floor with lift access
- Spacious open plan kitchen/living/dining room
- Fully fitted SieMatic kitchen with handleless units and integrated appliances
- Private south-east facing balcony accessible from the living room
- Main bedroom has fitted wardrobes and en suite shower room
- Second bedroom is a double room
- Guest bathroom
- Audley Club membership

Audley Stanbridge Earls
Awbridge, Nr Romsey,
Hampshire SO51 0ZS
01794 278 303
www.audleyvillages.co.uk

CGIs & Photos for illustration purposes only

