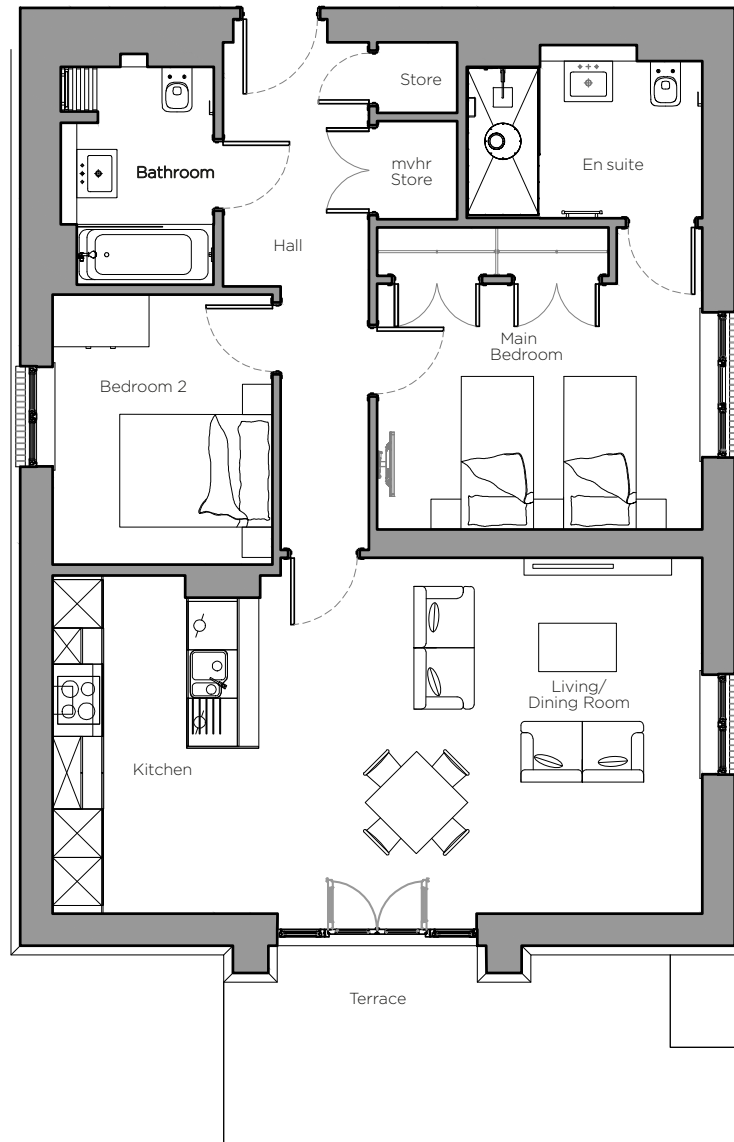


Audley Stanbridge Earls

Flat 24 Kenne Court
Ground Floor, two bedroom apartment
Plot F04



Internal Measurements

Kitchen/Living/Dining Room

Main Bedroom

Bedroom 2

Metric (m)

8.0 x 4.4

4.0 x 3.7

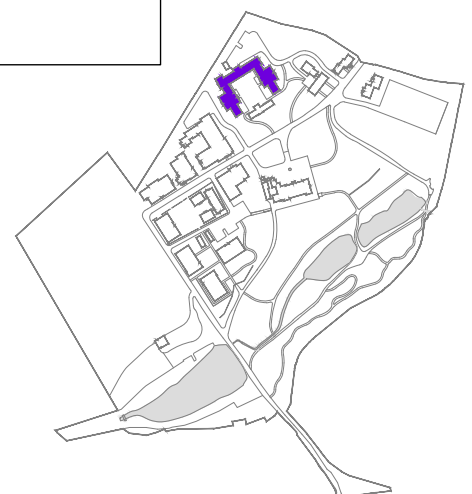
2.7 x 3.3

Imperial (ft)

26'2" x 14'4"

13'1" x 12'1"

8'8" x 10'8"



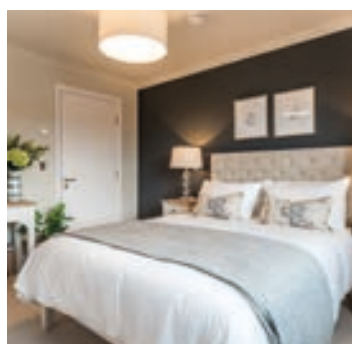
Audley Stanbridge Earls
Awbridge, Nr Romsey,
Hampshire SO51 0ZS
01794 278 303
www.audleyvillages.co.uk

These floor plans are illustrative and for marketing purposes only. Furniture shown to illustrate possible room layouts and not included within the sale. Designs vary according to plot. All details should be checked at the Sales Office.



Audley Stanbridge Earls

2 bedroom, ground floor apartment



Property highlights

- Open plan kitchen, living/dining room with double doors leading to private terrace
- Triple-aspect ground floor apartment
- Modern SieMatic kitchen with handleless units
- Integrated kitchen appliances
- Two double bedrooms
- En suite shower room and fitted wardrobes in main bedroom
- Additional guest bathroom
- Carpeted and decorated throughout
- Hallway storage
- Access to Audley Club



Audley Stanbridge Earls
Awbridge, Nr Romsey,
Hampshire SO51 0ZS
01794 278 303
www.audleyvillages.co.uk

CGIs & Photos for illustration purposes only

