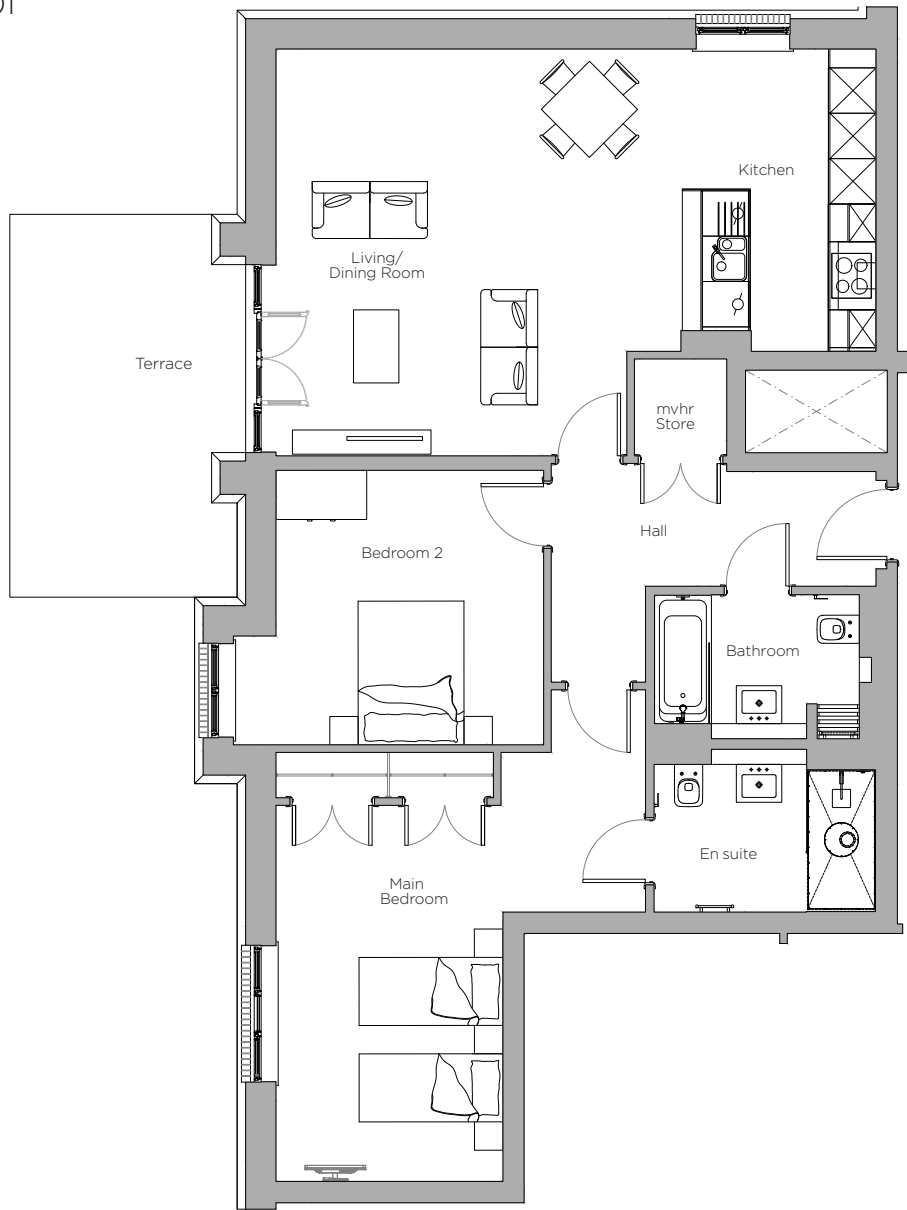


Audley Stanbridge Earls

Flat 23 Kenne Court
Ground Floor, two bedroom apartment
Plot F01



Internal Measurements

Kitchen/Living/Dining Room

Main Bedroom

Bedroom 2

Metric (m)

7.9 x 5.3

4.8 x 4.9

4.1 x 3.6

Imperial (ft)

25'9" x 17'3"

15'7" x 16'0"

13'4" x 11'8"

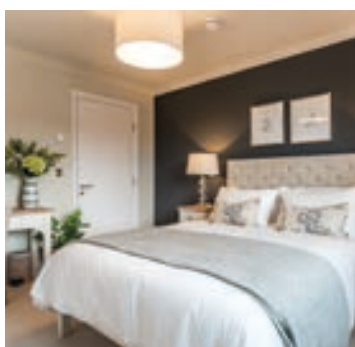
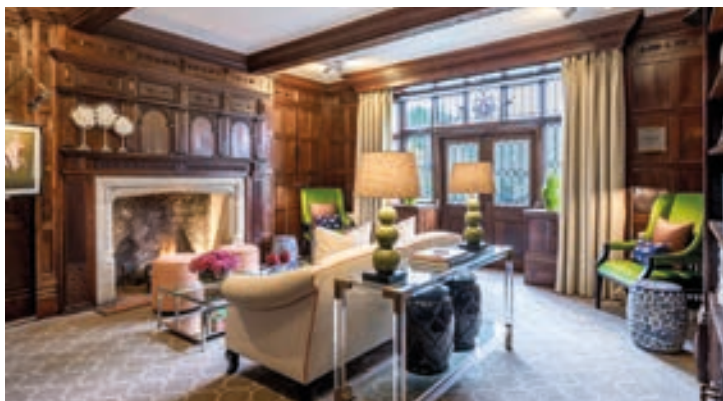


Audley Stanbridge Earls
Awbridge, Nr Romsey,
Hampshire SO51 0ZS
01794 278 303
www.audleyvillages.co.uk

These floor plans are illustrative and for marketing purposes only. Furniture shown to illustrate possible room layouts and not included within the sale. Designs vary according to plot. All details should be checked at the Sales Office.

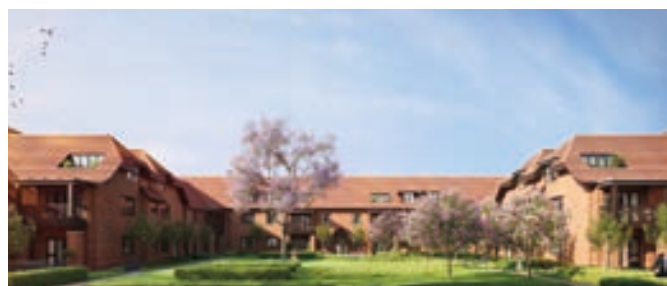
Audley Stanbridge Earls

2 bedroom, ground floor apartment



Property highlights

- Open plan kitchen/living and dining room
- SieMatic handleless kitchen units
- Integrated kitchen appliances
- Doors leading to private terrace from the living room
- Spacious main bedroom with double fitted wardrobes and en suite
- Carpeted and decorated throughout
- En suite and additional guest bathroom fitted with Villeroy & Boch sanitaryware
- Second double bathroom
- Access to Audley Club



Audley Stanbridge Earls
Awbridge, Nr Romsey,
Hampshire SO51 0ZS
01794 278 303
www.audleyvillages.co.uk

CGIs & Photos for illustration purposes only

