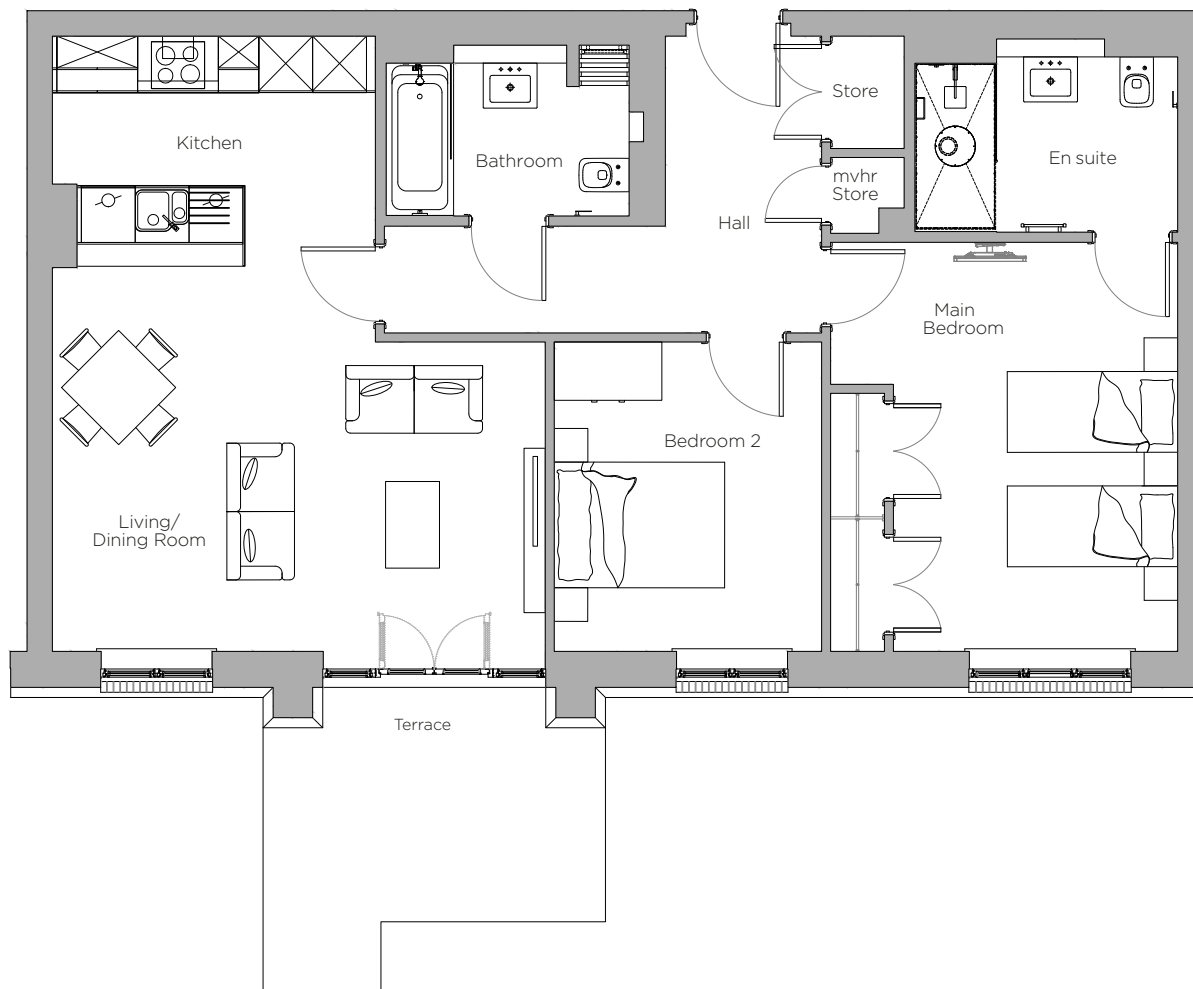


# Audley Stanbridge Earls

Flat 02 Kenne Court  
Ground Floor, two bedroom apartment  
Plot F14



## Internal Measurements

Kitchen/Living/Dining Room

Main Bedroom

Bedroom 2

## Metric (m)

5.4 x 6.8

3.8 x 4.5

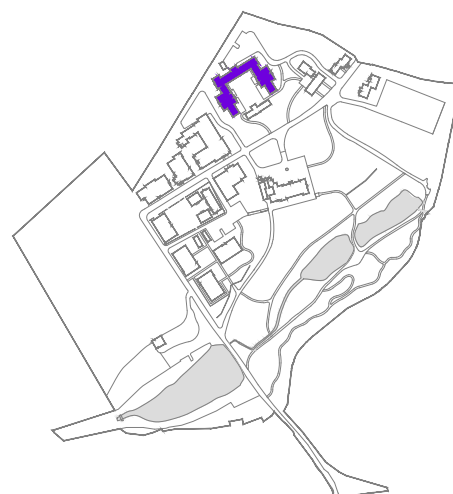
2.9 x 3.4

## Imperial (ft)

17'7" x 22'3"

12'4" x 14'7"

9'5" x 11'1"

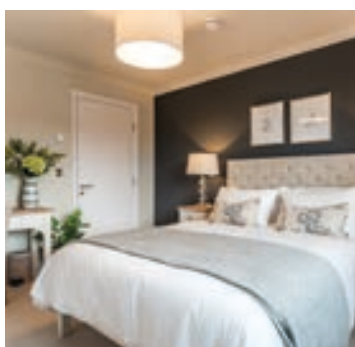


Audley Stanbridge Earls  
Awbridge, Nr Romsey,  
Hampshire SO51 0ZS  
01794 278 303  
[www.audleyvillages.co.uk](http://www.audleyvillages.co.uk)

These floor plans are illustrative and for marketing purposes only. Furniture shown to illustrate possible room layouts and not included within the sale. Designs vary according to plot. All details should be checked at the Sales Office.

# Audley Stanbridge Earls

2 bedroom, ground floor apartment



## Property highlights

- Spacious open plan kitchen/living and dining room
- Modern kitchen with integrated appliances and SieMatic handleless units
- South-east facing terrace accessible from living room
- Main bedroom with double built-in wardrobes and en suite shower room
- Additional guest bathroom fitted with Villeroy & Boch sanitaryware
- Second double bedroom
- Carpeted and decorated throughout
- Membership to the Audley Club

Audley Stanbridge Earls  
Awbridge, Nr Romsey,  
Hampshire SO51 0ZS  
01794 278 303  
[www.audleyvillages.co.uk](http://www.audleyvillages.co.uk)

CGIs & Photos for illustration purposes only

