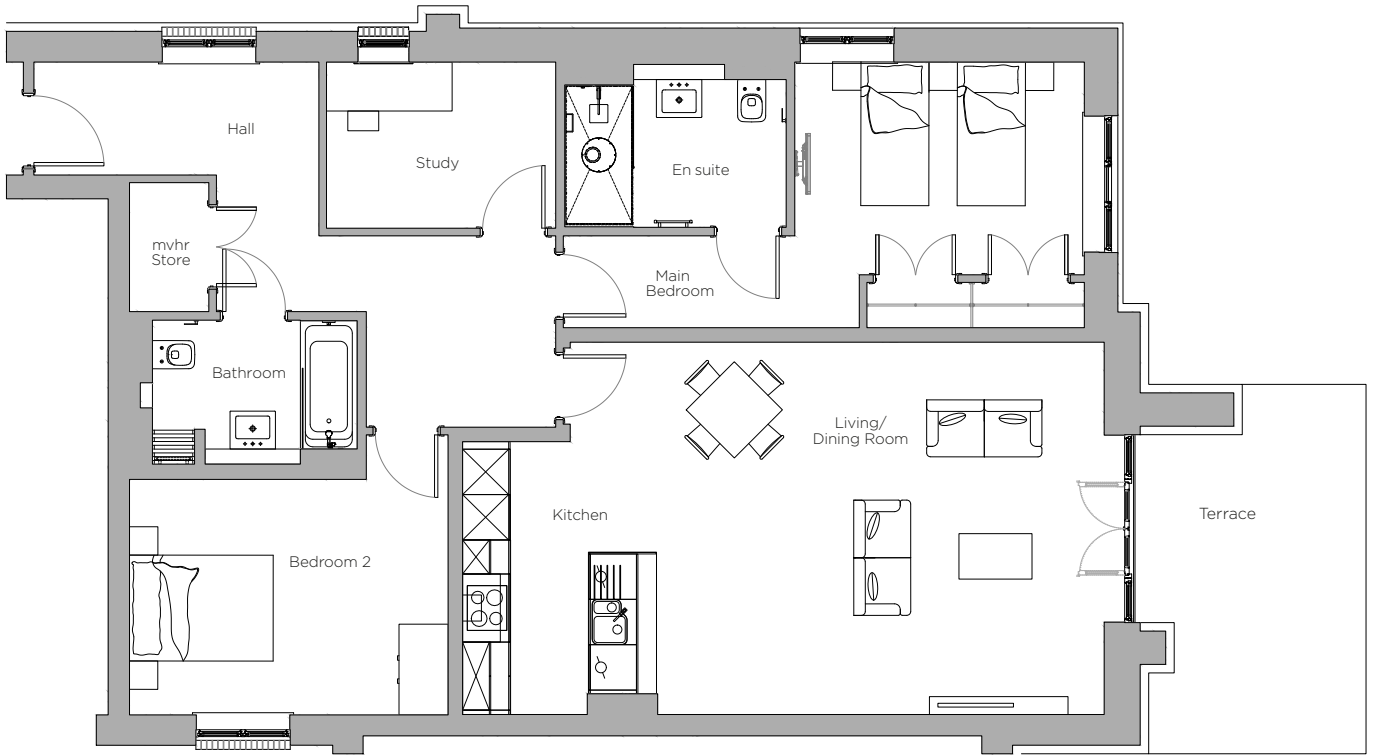


Audley Stanbridge Earls

Flat 01 Kenne Court
 Ground Floor, three bedroom apartment
 Plot F13



Internal Measurements

Kitchen/Living/Dining Room

Main Bedroom

Bedroom 2

Study

Metric (m)

8.4 x 4.9

6.9 x 3.5

4.2 x 3.7

3.0 x 2.1

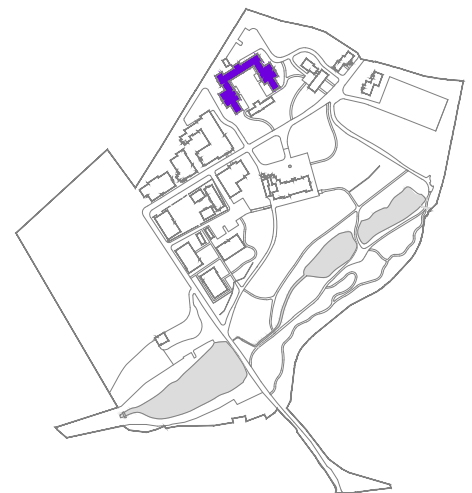
Imperial (ft)

27'5" x 16'0"

22'6" x 11'4"

13'7" x 11'1"

9'8" x 6'8"



Audley Stanbridge Earls
 Awbridge, Nr Romsey,
 Hampshire SO51 0ZS
 01794 278 303
www.audleyvillages.co.uk

These floor plans are illustrative and for marketing purposes only. Furniture shown to illustrate possible room layouts and not included within the sale. Designs vary according to plot. All details should be checked at the Sales Office.



Audley Stanbridge Earls

3 bedroom, ground floor apartment



Property highlights

- Main bedroom has double built-in wardrobes
- Second double bedroom and separate study
- Spacious open plan kitchen/living/dining room
- Terrace accessible from living room
- Modern kitchen with integrated appliances and SieMatic handleless units
- En suite and additional guest bathroom fitted with Villeroy & Boch sanitaryware
- Carpeted and decorated throughout
- Pre-wired for fibre broadband, BT, SkyQ and terrestrial TV
- Membership to the Audley Club

Audley Stanbridge Earls
Awbridge, Nr Romsey,
Hampshire SO51 0ZS
01794 278 303
www.audleyvillages.co.uk

CGIs & Photos for illustration purposes only

