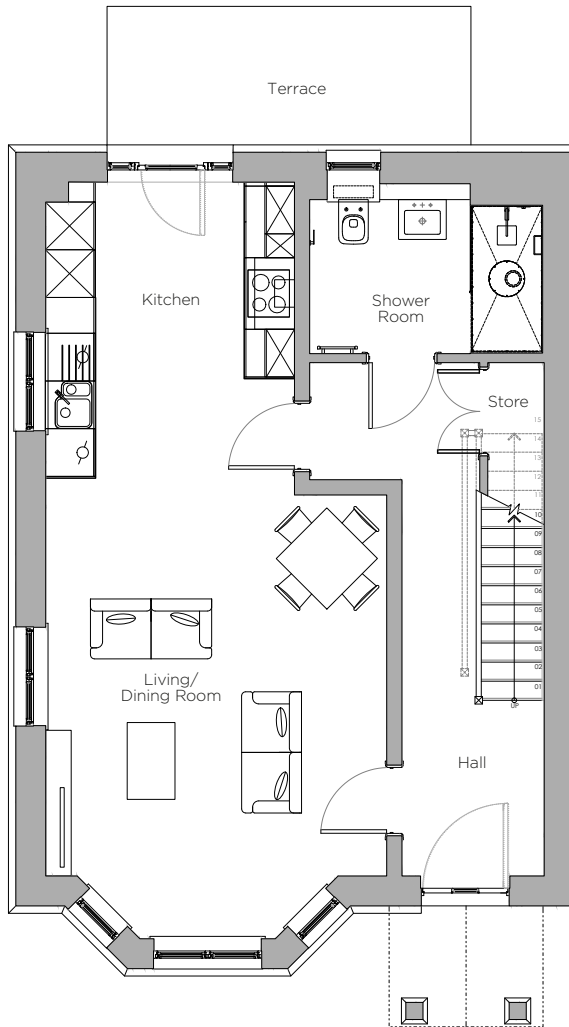
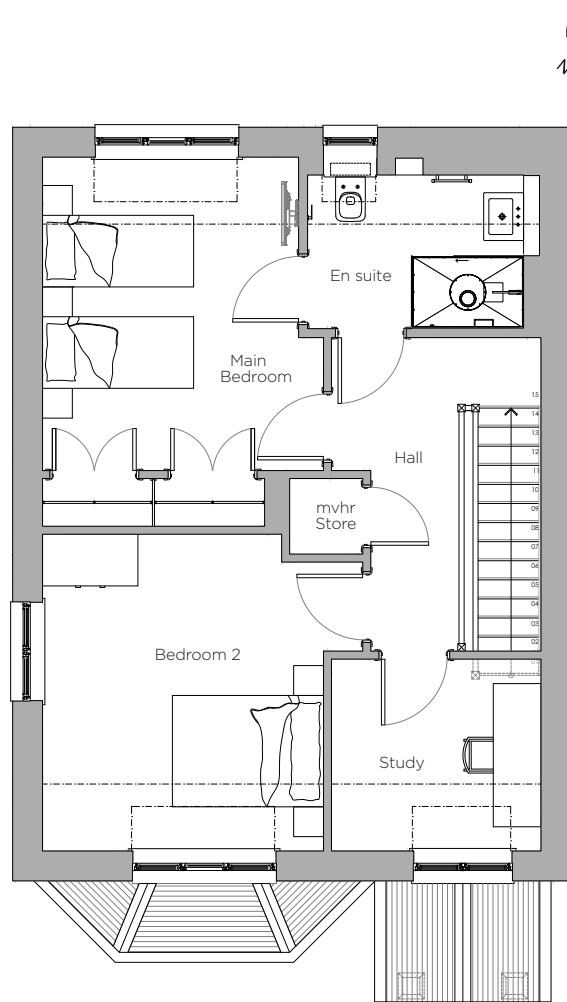


Audley Stanbridge Earls

Cottage 01
Hutchinson Cottage three bedrooms
Plot U01



Ground Floor



First Floor

Internal Measurements	Metric (m)	Imperial (ft)
Kitchen/Living/Dining Room	4.2 x 9.5	13'7" x 31'1"
Main Bedroom	3.5 x 3.9	11'4" x 12'7"
Bedroom 2	4.0 x 3.9	13'1" x 12'7"
Study	2.6 x 2.4	8'5" x 7'8"

Note:
Dashed line on the first floor indicates roof skelining line at 2.4m



Audley Stanbridge Earls
Awbridge, Nr Romsey,
Hampshire SO51 0ZS
01794 278 303
www.audleyvillages.co.uk

These floor plans are illustrative and for marketing purposes only. Furniture shown to illustrate possible room layouts and not included within the sale. Designs vary according to plot. All details should be checked at the Sales Office.



Audley Stanbridge Earls

Cottage, 3 bedroom



Property highlights

- Charming look and feel
- Main bedroom with en suite and built-in storage
- Spacious second bedroom and additional study
- Outdoor space accessible from the kitchen
- Light and airy throughout
- Luxury SieMatic kitchen with handleless units and integrated appliances
- Large living/dining room
- Access to the Audley Club
- Pre-wired for fibre broadband, BT, SkyQ and terrestrial TV



Audley Stanbridge Earls
Awbridge, Nr Romsey,
Hampshire SO51 0ZS
01794 278 303
www.audleyvillages.co.uk

CGIs & Photos for illustration purposes only

