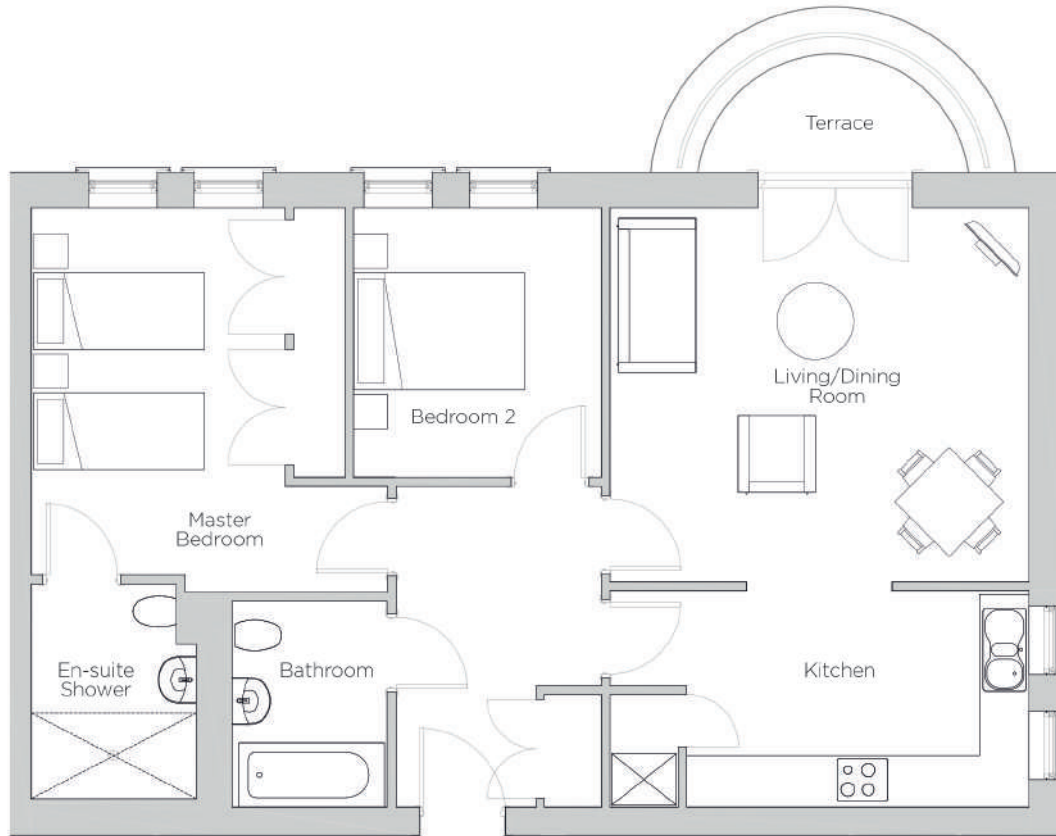
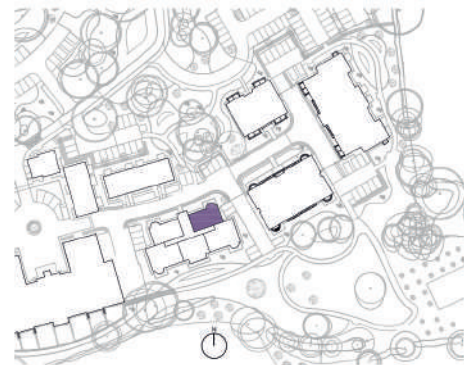


Audley Redwood

11 Smyth Court
Second Floor Apartment
Plot 87



Internal Measurements	Metric (m)	Imperial (ft)
Living/Dining Room	4.91 x 4.36	16'1" x 14'4"
Kitchen	4.91 x 2.53	116'1" x 8'3"
Master Bedroom	4.28 x 2.98	14'1" x 9'9"
Bedroom 2	3.14 x 2.90	10'4" x 9'6"
Terrace (approx)	3.00 x 1.38	10' x 4'6"



Audley Redwood
Beggars Bush Lane, Failand, Bristol BS8 3TG
01275 217 797
www.audleyvillages.co.uk

These floorplans are illustrative and for marketing purposes only. Maximum measurements are shown. Wardrobes not included in the overall room dimensions. Furniture shown to illustrate possible room layouts and not included in sale. Designs vary according to plot. All details should be checked at the Sales Office.
October 2018



Audley Redwood

11 Smyth Court
Second Floor Apartment
Plot 87



2 bedroom second floor apartment

With easy access to Redwood Hall and the Audley Club facilities, this apartment is in a new build apartment block. The living/dining room has a private terrace and adjoining kitchen.

Property specifications:

- Luxury SieMatic kitchen
- Terrace accessible from living/dining room
- Master bedroom with en-suite and fitted double wardrobes
- Villeroy & Boch guest bathroom
- Hallway storage



Audley Redwood
Beggar Bush Lane, Failand, Bristol BS8 3TG
01275 217 797
www.audleyvillages.co.uk

