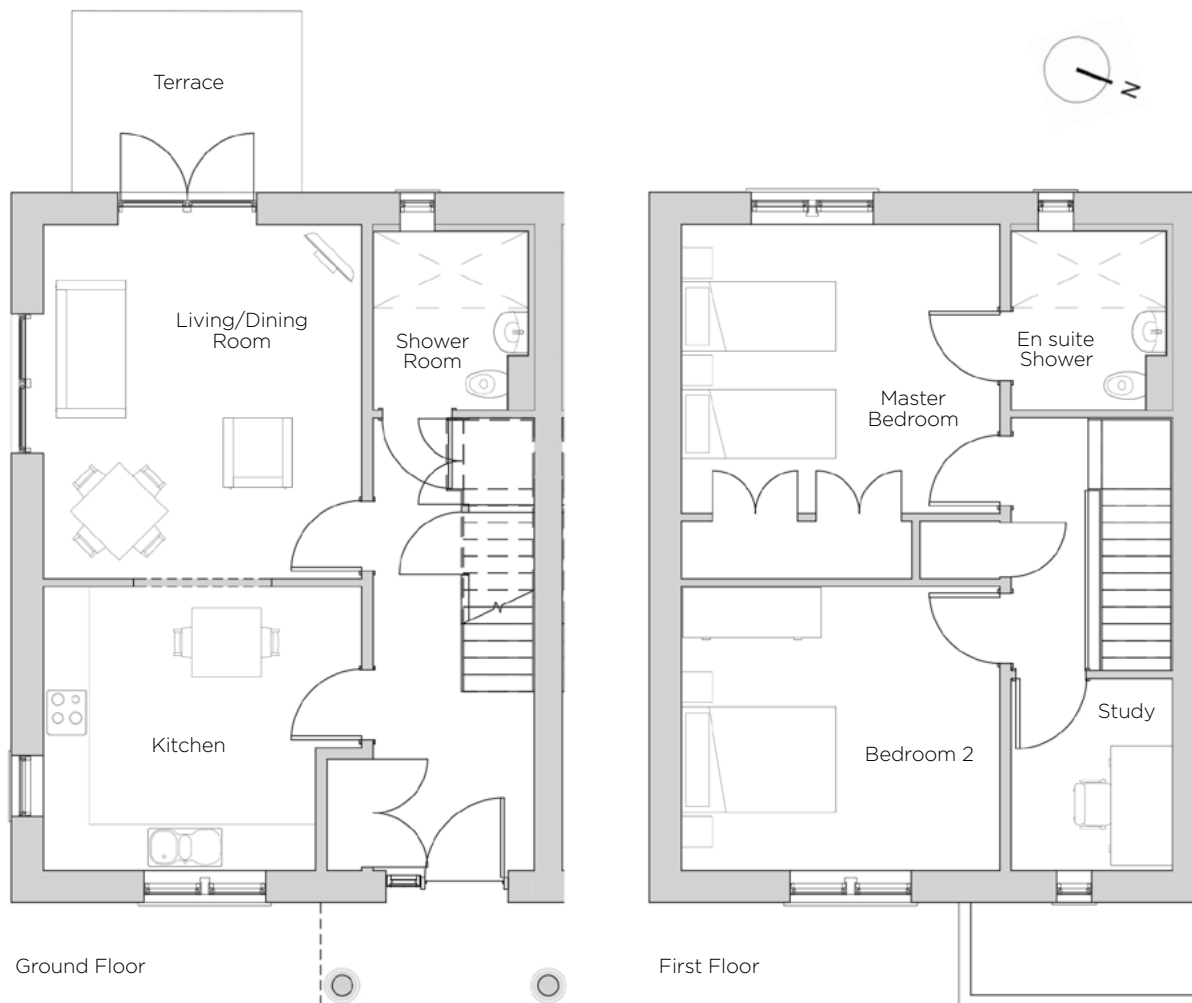


# Audley Redwood

8 Redwood Drive  
Cottage  
Plot 49



## Internal Measurements

## Metric (m)

## Imperial (ft)

|                    |             |               |
|--------------------|-------------|---------------|
| Living/Dining Room | 4.62 x 4.14 | 15'2" x 13'7" |
| Kitchen            | 3.70 x 3.54 | 12'2" x 11'7" |
| Master Bedroom     | 4.14 x 3.77 | 13'7" x 12'4" |
| Bedroom 2          | 4.14 x 3.70 | 13'7" x 12'2" |
| Study              | 2.50 x 2.10 | 8'2" x 6'11"  |
| Terrace (approx)   | 3.00 x 2.37 | 9'10" x 7'9"  |

Audley Redwood  
Beggar Bush Lane, Failand, Bristol BS8 3TF  
01275 217 797  
[www.audleyretirement.co.uk](http://www.audleyretirement.co.uk)

Built-in wardrobes in bedrooms have not been included in the overall dimensions.  
Maximum measurements shown. These pages are intended for marketing purposes only.  
Designs vary according to plot and all details should be checked at the Sales Office.  
January 2017



# Audley Redwood

8 Redwood Drive  
First Floor Apartment  
Plot 49



## 2 bedroom cottage with study

This two-bedroom cottage has plenty of space and benefits from a separate upstairs study. Enjoying a central location in the village, just a stone's throw away from the excellent amenities at Redwood Hall. The private terrace has views of the woodland at the edge of the village.

Property specifications:

- Private terrace
- Spacious luxury kitchen with integrated appliances and space for a breakfast table
- •Good size living/dining area with patio doors to the terrace
- Downstairs Villeroy & Boch shower room
- Large master bedroom with double fitted wardrobe and an en suite walk-in shower
- Spacious second double bedroom
- Spacious entrance hall

Audley Redwood  
Beggar Bush Lane, Failand, Bristol BS8 3TG  
01275 217 797  
[www.audleyvillages.co.uk](http://www.audleyvillages.co.uk)

