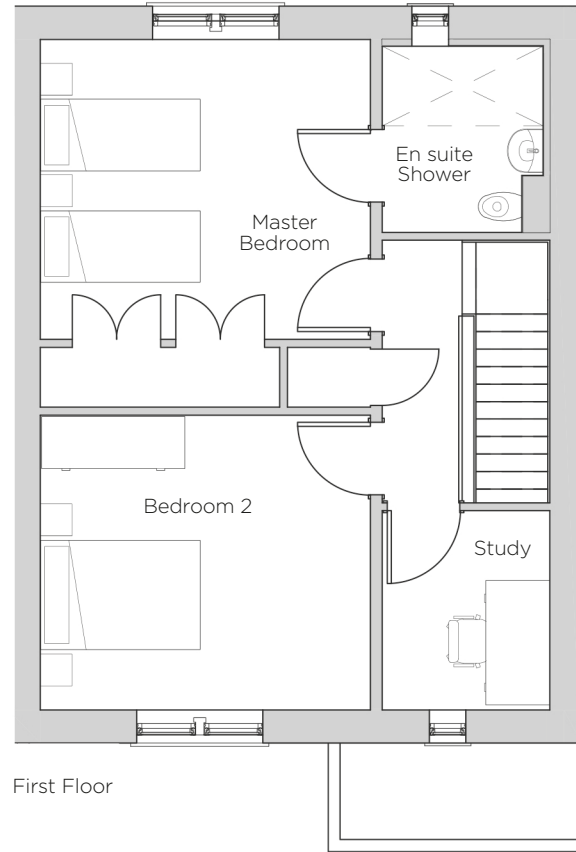
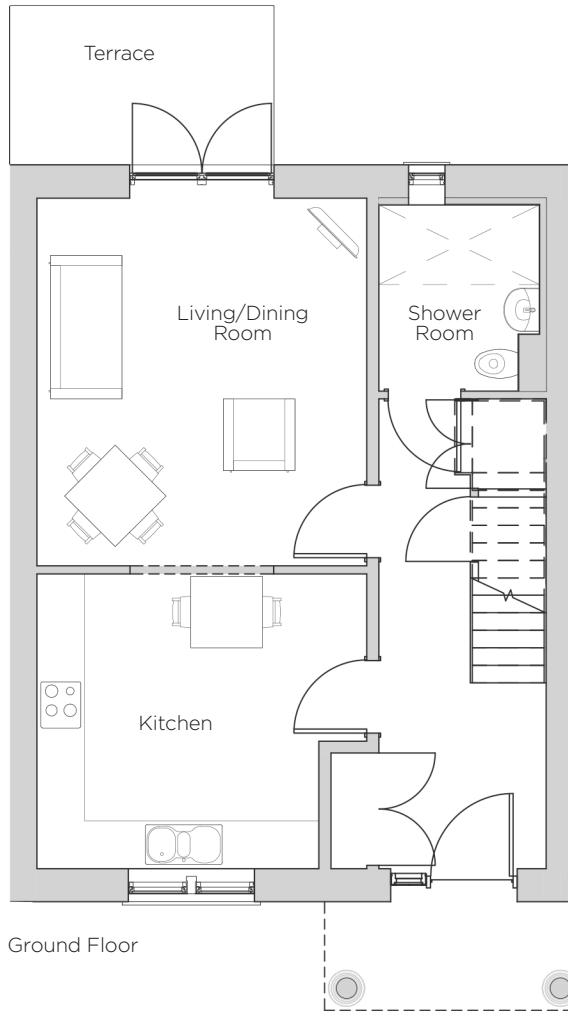


Audley Redwood

2 Redwood Drive
Cottage
Plot 54



Internal Measurements

Metric (m)

Imperial (ft)

Living/Dining Room	4.62 x 4.14	15'2" x 13'7"
Kitchen	3.70 x 3.54	12'2" x 11'7"
Master Bedroom	4.14 x 3.77	13'7" x 12'4"
Bedroom 2	4.14 x 3.70	13'7" x 12'2"
Study	2.50 x 2.10	8'2" x 6'11"
Terrace (approx)	3.90 x 2.37	12'10" x 7'9"

Audley Redwood
Beggar Bush Lane, Failand, Bristol BS8 3TG
01275 217 797
www.audleyvillages.co.uk

Built-in wardrobes in bedrooms have not been included in the overall dimensions.
Maximum measurements shown. These pages are intended for marketing purposes only.
Designs vary according to plot and all details should be checked at the Sales Office.
January 2017



Audley Redwood

2 Redwood Drive
Cottage
Plot 54



2 bedroom cottage

Overlooking the splendid courtyard at the centre of Audley Redwood, this beautiful two bedroom cottage is spacious, practical and luxurious. With a private terrace, study and large living area, this is a very special home.

Property specifications:

- SieMatic kitchen with breakfast table space and integrated appliances
- Spacious living area leading out onto the private terrace
- Downstairs luxury shower room
- Master bedroom has fitted wardrobes and an en suite walk-in shower
- Large second double bedroom
- Good size upstairs study
- A separate storage cupboard on each floor

Audley Redwood
Beggar Bush Lane, Failand, Bristol BS8 3TG
01275 217 797
www.audleyvillages.co.uk

