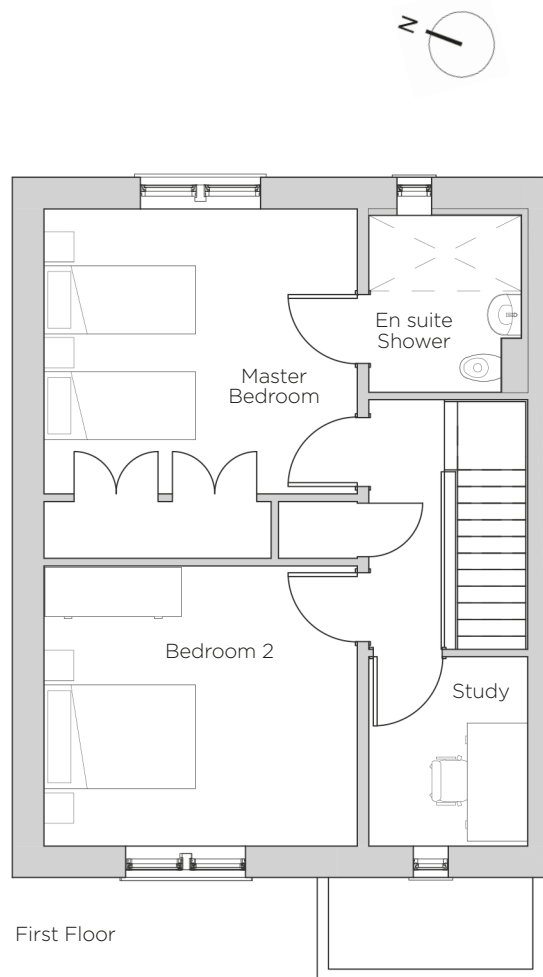
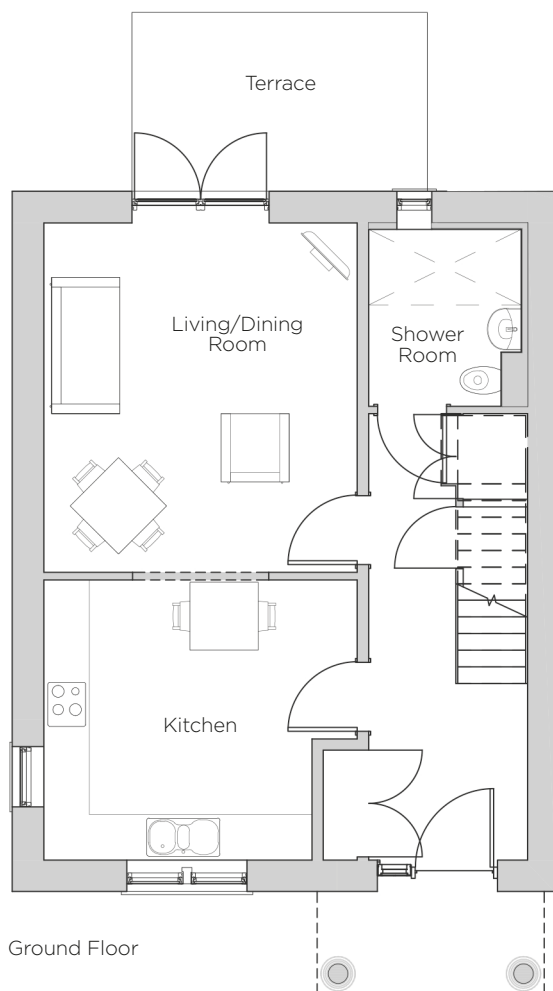


Audley Redwood

1 Redwood Drive
Cottage
Plot 53



Internal Measurements

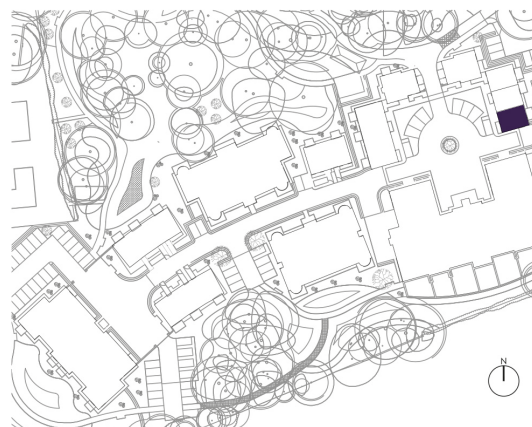
Metric (m)

Imperial (ft)

Living/Dining Room	4.62 x 4.14	15'2" x 13'7"
Kitchen	3.70 x 3.54	12'2" x 11'7"
Master Bedroom	4.14 x 3.77	13'7" x 12'4"
Bedroom 2	4.14 x 3.70	13'7" x 12'2"
Study	2.50 x 2.10	8'2" x 6'11"
Terrace (approx)	3.90 x 2.37	12'10" x 7'9"

Audley Redwood
Beggar Bush Lane, Failand, Bristol BS8 3TG
01275 217 797
www.audleyvillages.co.uk

Built-in wardrobes in bedrooms have not been included in the overall dimensions.
Maximum measurements shown. These pages are intended for marketing purposes only.
Designs vary according to plot and all details should be checked at the Sales Office.
January 2017



Audley Redwood

1 Redwood Drive
Cottage
Plot 53



2 bedroom cottage with study

A two bedroom cottage with central positioning next to Redwood Hall. The kitchen, study and second bedroom overlook the beautifully designed courtyard at the centre of the village. The private terrace, accessed through the living room, can be enjoyed throughout the year.

Property specifications:

- SieMatic kitchen with breakfast table space and integrated luxury appliances
- Spacious living/dining leading out onto the terrace
- Downstairs luxury shower room
- Master bedroom has fitted wardrobes and an en suite walk-in shower
- Large second double bedroom
- Good size upstairs study

Audley Redwood
Beggar Bush Lane, Failand, Bristol BS8 3TG
01275 217 797
www.audleyvillages.co.uk

