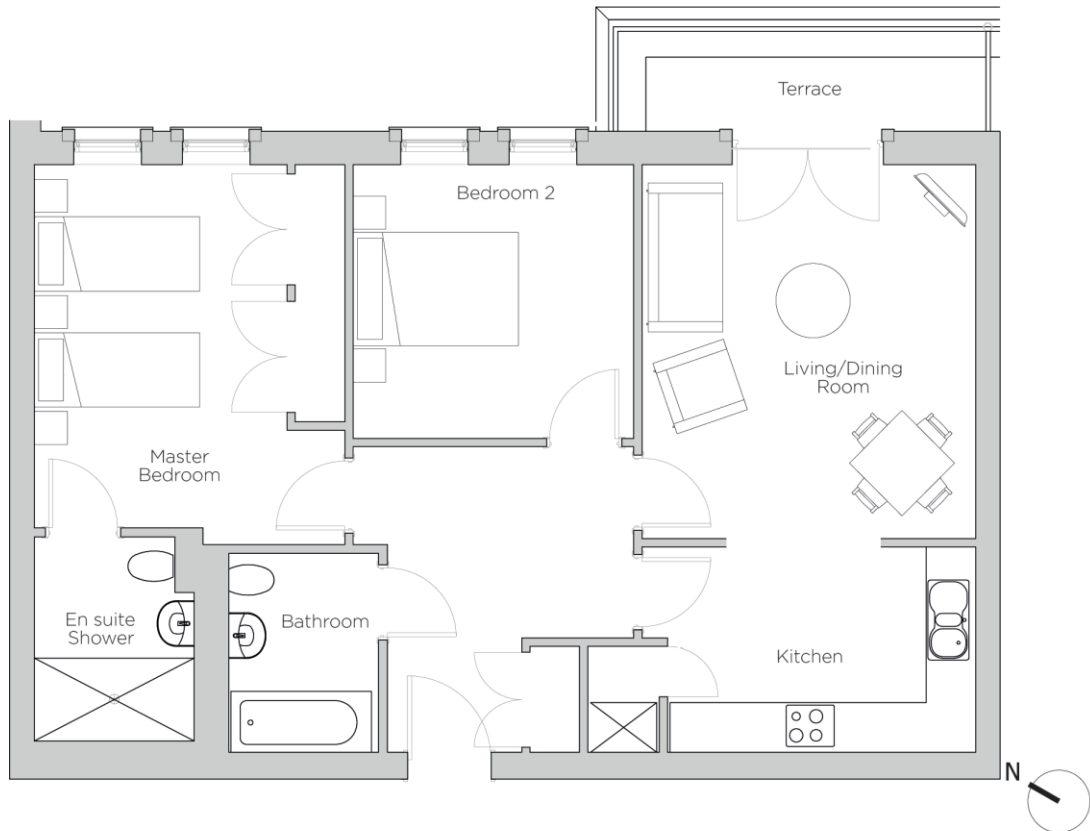


Audley Redwood

15 Whitebeam Court
Two bedroom pre-owned top floor apartment



Measurements	Metric (m)	Imperial (ft)
Living Room (ex. bay)	4.52 x 4.04	14'10" x 13'3"
Kitchen	3.73 x 2.48	12'3" x 8'2"
Master Bedroom	4.39 x 3.06	14'5" x 10'1"
Bedroom 2	3.40 x 3.31	11'2" x 10'10"
Terrace (approx.)	4.46 x 1.21	14'7" x 4'0"
Total Sq. Ft 842		

Score	Energy rating	Current	Potential
92+	A		
81-91	B	84 B	84 B
69-80	C		
55-68	D		
39-54	E		
21-38	F		
1-20	G		

Audley Redwood
Beggar Bush Lane, Failand, Bristol, BS8 3TF
01275 217 797 redwoodsales@audleyvillages.co.uk
www.audleyvillages.co.uk

Built in wardrobes in bedrooms have not been included in the overall dimensions.
Maximum measurements shown. These pages are intended for marketing purposes only.
Designs vary according to plot and all details should be checked at the Sales office.



Audley Redwood

15 Whitebeam Court
Two bedroom pre-owned top floor apartment



Two bedroom, second floor apartment

This two bedroom, second floor apartment is located close to the woodland walk. The master bedroom has an en suite and double fitted wardrobes, and the second room is a good size double. There is a private terrace accessed from the living/dining room.

Property specifications:

- Luxury SieMatic kitchen with integrated appliances
- Private terrace accessible from the living/dining room
- Master bedroom with fitted wardrobes
- Villeroy & Boch guest bathroom and en suite from master bedroom
- Second double bedroom
- Hallway storage



Guide Price £435,000 (other fees apply)

Monthly management fee £455.77
Annual ground rent £500

Viewing by appointment with the sales office.



Audley Redwood
Beggar Bush Lane, Failand, Bristol, BS8 3TF
01275 217 797 redwoodsales@audleyvillages.co.uk
www.audleyvillages.co.uk

