

15 Whitebeam Court



Two bedroom, second floor apartment

This two bedroom, second floor apartment is located close to the woodland walk. The master bedroom has an en suite and double fitted wardrobes, and the second room is a good size double. There is a private terrace accessed from the living/dining room.

Property specifications:

- Luxury SieMatic kitchen with integrated appliances
- Private terrace accessible from the living/dining room
- Master bedroom with fitted wardrobes
- Villeroy & Boch guest bathroom and en suite from master bedroom
- Second double bedroom
- Hallway storage

Guide Price £435,000 (other fees apply)

Monthly management fee £455.77

Annual ground rent £500

Viewing by appointment with the sales office.

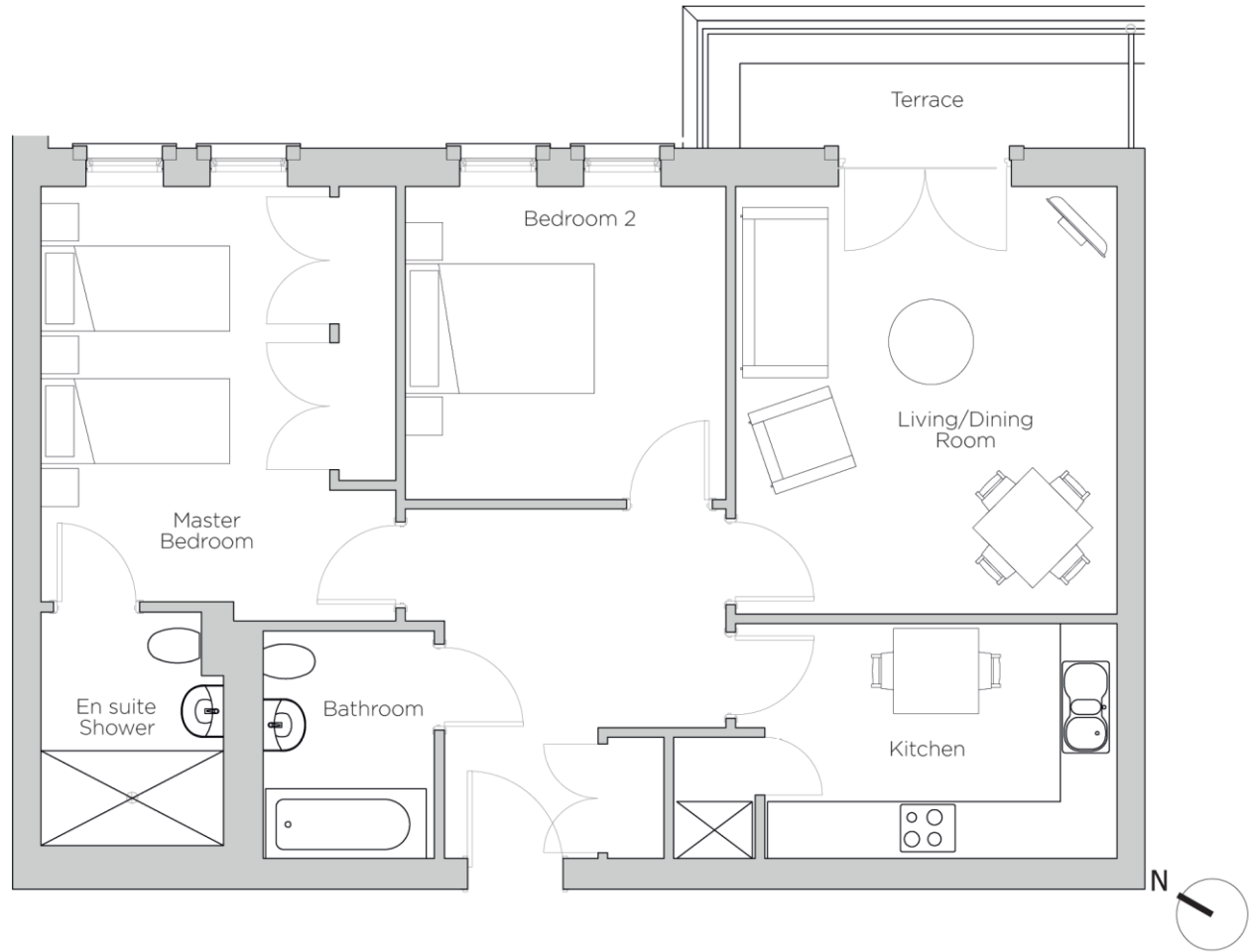
Audley Redwood
Beggar Bush Lane, Failand, Bristol, BS8 3TF
01275 217 797 redwoodsales@audleyvillages.co.uk
www.audleyvillages.co.uk



15 Whitebeam Court

Measurements	Metric (m)	Imperial (ft)
Living Room (ex. bay)	4.52 x 4.04	14'10" x 13'3"
Kitchen	3.73 x 2.48	12'3" x 8'2"
Master Bedroom	4.39 x 3.06	14'5" x 10'1"
Bedroom 2	3.40 x 3.31	11'2" x 10'10"
Terrace (approx.)	4.46 x 1.21	14'7" x 4'0"
Total Sq. Ft 842		

Built in wardrobes in bedrooms have not been included in the overall dimensions. Maximum measurements shown.



Score	Energy rating	Current	Potential
92+	A		
81-91	B	84 B	84 B
69-80	C		
55-68	D		
39-54	E		
21-38	F		
1-20	G		

These pages are intended for marketing purposes only. Designs vary according to plot and all details should be checked at the Sales office. May 2021

