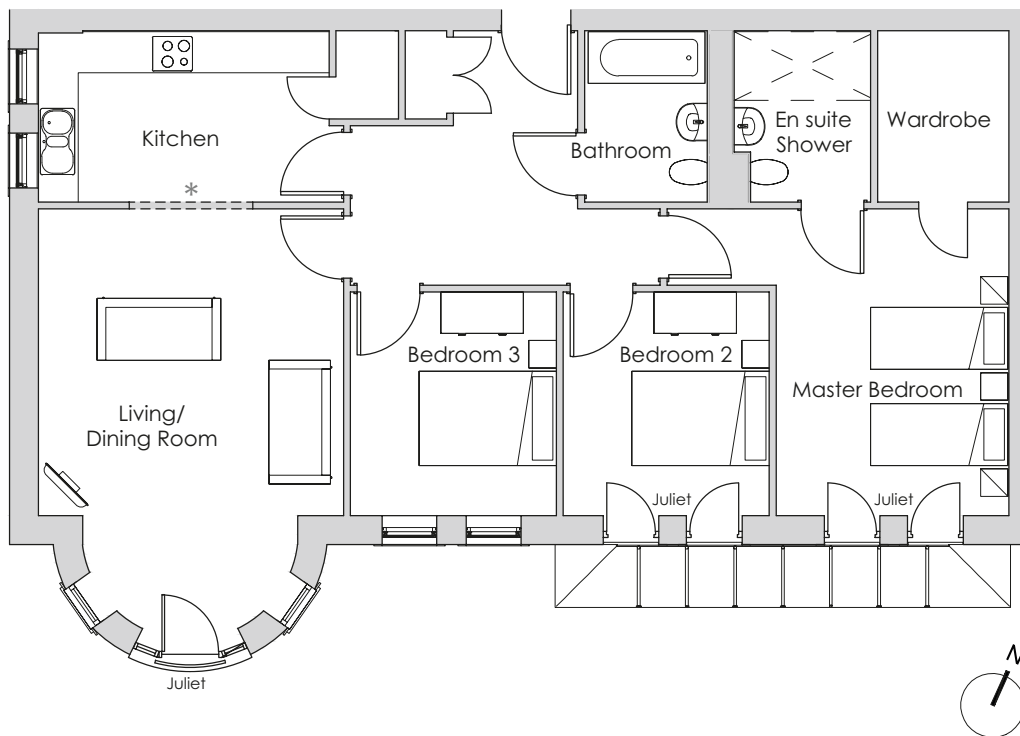


Audley Redwood

7 Marshall Place
Second Floor Apartment
Plot 41



*Open plan option available

Internal Measurements	Metric (m)	Imperial (ft)
Living/Dining Room	6.15 x 4.45	20'2" x 14'7"
Kitchen	4.24 x 2.46	13'11" x 8'1"
Master Bedroom	4.47 x 3.39	14'8" x 11'1"
Bedroom 2	3.26 x 3.00	10'8" x 9'10"
Bedroom 3	3.26 x 3.00	10'8" x 9'10"



Audley Redwood
Beggar Bush Lane, Failand, Bristol BS8 3TG
01275 217 797
www.audleyvillages.co.uk

Built-in wardrobes in bedrooms have not been included in the overall dimensions.
Maximum measurements shown. These pages are intended for marketing purposes only.
Designs vary according to plot and all details should be checked at the Sales Office.
April 2016



Audley Redwood

7 Marshall Place
Second Floor Apartment
Plot 41



3 bedroom second floor apartment

This light and spacious apartment has a south-facing living/dining room with a Juliet balcony overlooking the playing fields behind the village. The master bedroom has a walk-in wardrobe and an en suite shower, and there are another two double bedrooms.

Property specifications:

- Luxury SieMatic kitchen
- Large living/dining room with Juliet balcony
- Master bedroom with walk-in wardrobe and en suite shower room
- Two additional double bedrooms
- Villeroy & Boch guest bathroom

Audley Redwood
Beggars Bush Lane, Failand, Bristol BS8 3TG
01275 217 797
www.audleyvillages.co.uk

